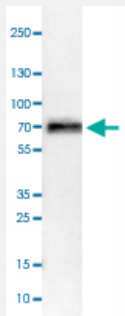


MAP2 polyclonal antibody

Catalog # PAB30796

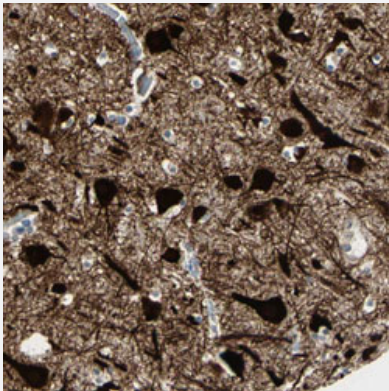
Size 100 uL

Applications



Western Blot (Cell lysate)

Western Blot analysis of NTERA-2 cell lysate with MAP2 polyclonal antibody (Cat # PAB30796).



Immunohistochemistry (Formalin/PFA-fixed paraffin-embedded sections)

Immunohistochemical staining (Formalin-fixed paraffin-embedded sections) of human cerebral cortex with MAP2 polyclonal antibody (Cat # PAB30796) shows strong cytoplasmic and nuclear positivity in neuronal cells.

Specification

Product Description	Rabbit polyclonal antibody raised against partial recombinant human MAP2.
Immunogen	Recombinant protein corresponding to human MAP2.
Sequence	SLPRPSSILPPRRGVSGDRDENSFSLNSSISSSARRTTRSEPIRRAGKSGTSTPTTPGSTAITPGTP PSYSSRTPGTPGTPSYPRTPHTPGTPKSAILVPSEKKVAIIIRTPPKSPATPKQLRLINQPLPDLKNVK
Host	Rabbit
Reactivity	Human

Form	Liquid
Purification	Antigen affinity purification
Isotype	IgG
Recommend Usage	Immunofluorescence (1-4 ug/mL) Immunohistochemistry (Formalin/PFA-fixed paraffin-embedded sections) (1:20-1:50) Western Blot (1:100-1:250) The optimal working dilution should be determined by the end user.
Storage Buffer	In PBS, pH 7.2 (40% glycerol, 0.02% sodium azide).
Storage Instruction	Store at 4°C. For long term storage store at -20°C. Aliquot to avoid repeated freezing and thawing.
Note	This product contains sodium azide: a POISONOUS AND HAZARDOUS SUBSTANCE which should be handled by trained staff only.

Applications

- Western Blot (Cell lysate)

Western Blot analysis of NTERA-2 cell lysate with MAP2 polyclonal antibody (Cat # PAB30796).

- Immunohistochemistry (Formalin/PFA-fixed paraffin-embedded sections)

Immunohistochemical staining (Formalin-fixed paraffin-embedded sections) of human cerebral cortex with MAP2 polyclonal antibody (Cat # PAB30796) shows strong cytoplasmic and nuclear positivity in neuronal cells.

Gene Info — MAP2

Entrez GeneID	4133
Protein Accession#	P11137
Gene Name	MAP2
Gene Alias	DKFZp686I2148, MAP2A, MAP2B, MAP2C
Gene Description	microtubule-associated protein 2
Omim ID	157130
Gene Ontology	Hyperlink

Gene Summary

This gene encodes a protein that belongs to the microtubule-associated protein family. The proteins of this family are thought to be involved in microtubule assembly, which is an essential step in neurogenesis. The products of similar genes in rat and mouse are neuron-specific cytoskeletal proteins that are enriched in dendrites, implicating a role in determining and stabilizing dendritic shape during neuron development. A number of alternatively spliced variants encoding distinct isoforms have been described. [provided by RefSeq]

Other Designations

OTTHUMP00000163916

Disease

- [Cardiovascular Diseases](#)
- [Diabetes Mellitus](#)
- [Edema](#)
- [Tobacco Use Disorder](#)