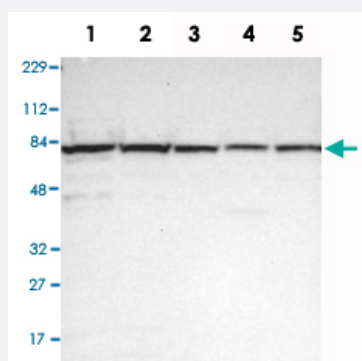


UBQLN2 polyclonal antibody

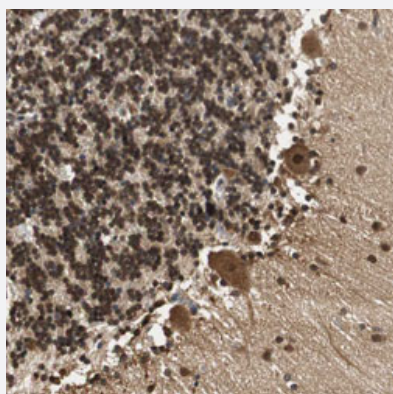
Catalog # PAB30759 Size 100 uL

Applications



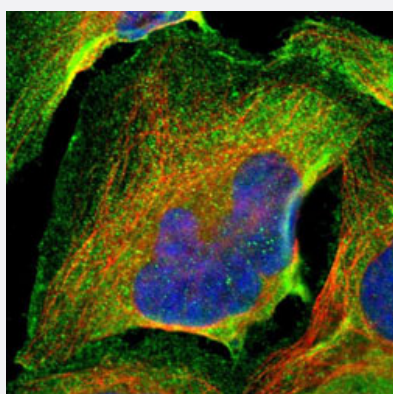
Western Blot

Western Blot analysis of Lane 1: RT-4, Lane 2: U-251MG sp, Lane 3: human plasma (IgG/HSA depleted), Lane 4: human liver and Lane 5: human tonsil lysates with UBQLN2 polyclonal antibody (Cat # PAB30759).



Immunohistochemistry (Formalin/PFA-fixed paraffin-embedded sections)

Immunohistochemical staining (Formalin-fixed paraffin-embedded sections) of human cerebellum with UBQLN2 polyclonal antibody (Cat # PAB30759) shows strong nuclear and cytoplasmic positivity in Purkinje cells, cells in molecular layer and cells in granular layer.



Immunofluorescence

Immunofluorescent staining of U-2 OS with UBQLN2 polyclonal antibody (Cat # PAB30759) (Green) shows positivity in plasma membrane and cytoplasm.

Specification

Product Description	Rabbit polyclonal antibody raised against partial recombinant human UBQLN2.
Immunogen	Recombinant protein corresponding to human UBQLN2.
Sequence	LSAMSNPRAMQALMQIQGLQTLATEAPGLIPSFTPGVGVGVLTGAIGPVGPVTPIGPIGPMVPFTPI GPIGPIGPTGPAAPPGSTGSGGPTGPTVSSAAPSETTSPTSESGPNQQFIQQMVQALAGANAPQL PNPEVRFQQQLEQLN
Host	Rabbit
Reactivity	Human
Form	Liquid
Purification	Antigen affinity purification
Isotype	IgG
Recommend Usage	Immunofluorescence (1-4 ug/mL) Immunohistochemistry (Formalin/PFA-fixed paraffin-embedded sections) (1:200-1:500) Western Blot (1:100-1:250) The optimal working dilution should be determined by the end user.
Storage Buffer	In PBS, pH 7.2 (40% glycerol, 0.02% sodium azide).
Storage Instruction	Store at 4°C. For long term storage store at -20°C. Aliquot to avoid repeated freezing and thawing.
Note	This product contains sodium azide: a POISONOUS AND HAZARDOUS SUBSTANCE which should be handled by trained staff only.

Applications

- Western Blot

Western Blot analysis of Lane 1: RT-4, Lane 2: U-251MG sp, Lane 3: human plasma (IgG/HSA depleted), Lane 4: human liver and Lane 5: human tonsil lysates with UBQLN2 polyclonal antibody (Cat # PAB30759).

- Immunohistochemistry (Formalin/PFA-fixed paraffin-embedded sections)

Immunohistochemical staining (Formalin-fixed paraffin-embedded sections) of human cerebellum with UBQLN2 polyclonal antibody (Cat # PAB30759) shows strong nuclear and cytoplasmic positivity in Purkinje cells, cells in molecular layer and cells in granular layer.

- Immunofluorescence

Immunofluorescent staining of U-2 OS with UBQLN2 polyclonal antibody (Cat # PAB30759) (Green) shows positivity in plasma membrane and cytoplasm.

Gene Info — UBQLN2

Entrez GeneID [29978](#)**Protein Accession#** [Q9UHD9](#)**Gene Name** UBQLN2**Gene Alias** CHAP1, CHAP1/DSK2, Dsk2, HRIHFB2157, LIC-2, N4BP4, PLIC-2, PLIC2, RIHFB2157**Gene Description** ubiquilin 2**Omim ID** [300264](#)**Gene Ontology** [Hyperlink](#)

Gene Summary This gene encodes an ubiquitin-like protein (ubiquilin) that shares high degree of similarity with related products in yeast, rat and frog. Ubiquilins contain a N-terminal ubiquitin-like domain and a C-terminal ubiquitin-associated domain. They physically associate with both proteasomes and ubiquitin ligases, and thus thought to functionally link the ubiquitination machinery to the proteasome to affect in vivo protein degradation. This ubiquilin has also been shown to bind the ATPase domain of the Hsp70-like Stch protein. [provided by RefSeq]

Other Designations Nedd4 binding protein 4|bA431N15.1 (ubiquilin 2)