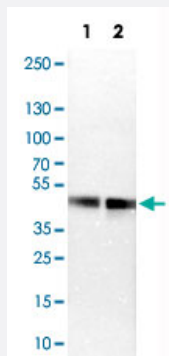


FOSL2 polyclonal antibody

Catalog # PAB30711

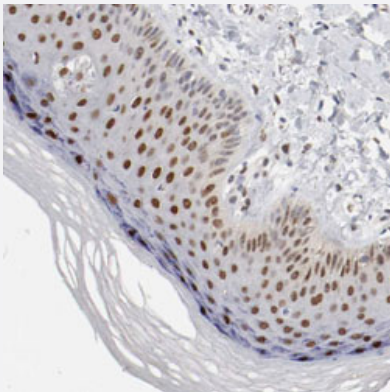
Size 100 uL

Applications



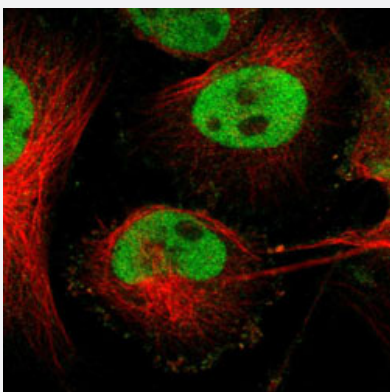
Western Blot (Cell lysate)

Western Blot analysis of Lane 1: NIH-3T3 cell lysate (mouse embryonic fibroblast cells) and Lane 2: NBT-II cell lysate (Wistar rat bladder tumor cells) with FOSL2 polyclonal antibody (Cat # PAB30711).



Immunohistochemistry (Formalin/PFA-fixed paraffin-embedded sections)

Immunohistochemical staining (Formalin-fixed paraffin-embedded sections) of human skin with FOSL2 polyclonal antibody (Cat # PAB30711) shows strong nuclear positivity in epidermal cells.



Immunofluorescence

Immunofluorescent staining of U-251 MG with FOSL2 polyclonal antibody (Cat # PAB30711) (Green) shows positivity in nucleus but excluded from the nucleoli.

Specification

Product Description	Rabbit polyclonal antibody raised against partial recombinant human FOSL2.
Immunogen	Recombinant protein corresponding to human FOSL2.
Sequence	EKLEFMLVAHGPPVCKISPEERRSPAPGLQPMRSGGSGVGAVVVKQEPLEEDSPSSSSAGLDK AQRSVIKPISIAGGFYGEELHTPIVVTSTPAVTPGTSNLVFTYPSVLEQESPSPSESCSKAHRRS SSSGDQSSDSL
Host	Rabbit
Reactivity	Human, Mouse, Rat
Form	Liquid
Purification	Antigen affinity purification
Isotype	IgG
Recommend Usage	Immunofluorescence (1-4 ug/mL) Immunohistochemistry (Formalin/PFA-fixed paraffin-embedded sections) (1:200-1:500) Western Blot (1:100-1:250) The optimal working dilution should be determined by the end user.
Storage Buffer	In PBS, pH 7.2 (40% glycerol, 0.02% sodium azide).
Storage Instruction	Store at 4°C. For long term storage store at -20°C. Aliquot to avoid repeated freezing and thawing.
Note	This product contains sodium azide: a POISONOUS AND HAZARDOUS SUBSTANCE which should be handled by trained staff only.

Applications

- Western Blot (Cell lysate)

Western Blot analysis of Lane 1: NIH-3T3 cell lysate (mouse embryonic fibroblast cells) and Lane 2: NBT-II cell lysate (Wistar rat bladder tumor cells) with FOSL2 polyclonal antibody (Cat # PAB30711).

- Immunohistochemistry (Formalin/PFA-fixed paraffin-embedded sections)

Immunohistochemical staining (Formalin-fixed paraffin-embedded sections) of human skin with FOSL2 polyclonal antibody (Cat # PAB30711) shows strong nuclear positivity in epidermal cells.

- Immunofluorescence

Immunofluorescent staining of U-251 MG with FOSL2 polyclonal antibody (Cat # PAB30711) (Green) shows positivity in nucleus but excluded from the nucleoli.

Gene Info — FOSL2

Entrez GeneID [2355](#)**Protein Accession#** [P15408](#)**Gene Name** FOSL2**Gene Alias** FLJ23306, FRA2**Gene Description** FOS-like antigen 2**Omim ID** [601575](#)**Gene Ontology** [Hyperlink](#)

Gene Summary The Fos gene family consists of 4 members: FOS, FOSB, FOSL1, and FOSL2. These genes encode leucine zipper proteins that can dimerize with proteins of the JUN family, thereby forming the transcription factor complex AP-1. As such, the FOS proteins have been implicated as regulators of cell proliferation, differentiation, and transformation. [provided by RefSeq]

Other Designations -

Disease

- [Disease Models](#)
- [Genetic Predisposition to Disease](#)