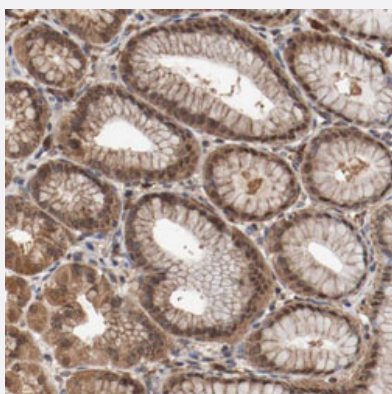


# AFG3L2 polyclonal antibody

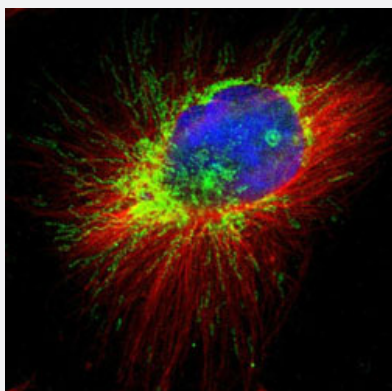
Catalog # PAB30693      Size 100 uL

## Applications



### Immunohistochemistry (Formalin/PFA-fixed paraffin-embedded sections)

Immunohistochemical staining (Formalin-fixed paraffin-embedded sections) of human stomach with AFG3L2 polyclonal antibody (Cat # PAB30693) shows cytoplasmic and nuclear positivity in glandular cells.



### Immunofluorescence

Immunofluorescent staining of U-251 MG with AFG3L2 polyclonal antibody (Cat # PAB30693) (Green) shows positivity in mitochondria.

## Specification

Product Description	Rabbit polyclonal antibody raised against partial recombinant human AFG3L2.
Immunogen	Recombinant protein corresponding to human AFG3L2.
Sequence	KTLLAKATAGEANVPFITVSGSEFLEMFGVGPARVRDLFALARKNAPCILFIDEIDAVGRKRGRG NFGGQSEQENTLNQLLVEMDGFNTTNNVILAGTNRPDILDPALLRPGRFDRQIFIGPPDIKGRASIF KVHLRPLK
Host	Rabbit

Reactivity	Human
Form	Liquid
Purification	Antigen affinity purification
Isotype	IgG
Recommend Usage	Immunofluorescence (1-4 ug/mL) Immunohistochemistry (Formalin/PFA-fixed paraffin-embedded sections) (1:50-1:200) The optimal working dilution should be determined by the end user.
Storage Buffer	In PBS, pH 7.2 (40% glycerol, 0.02% sodium azide).
Storage Instruction	Store at 4°C. For long term storage store at -20°C. Aliquot to avoid repeated freezing and thawing.
Note	This product contains sodium azide: a POISONOUS AND HAZARDOUS SUBSTANCE which should be handled by trained staff only.

## Applications

- Immunohistochemistry (Formalin/PFA-fixed paraffin-embedded sections)

Immunohistochemical staining (Formalin-fixed paraffin-embedded sections) of human stomach with AFG3L2 polyclonal antibody (Cat # PAB30693) shows cytoplasmic and nuclear positivity in glandular cells.

- Immunofluorescence

Immunofluorescent staining of U-251 MG with AFG3L2 polyclonal antibody (Cat # PAB30693) (Green) shows positivity in mitochondria.

## Gene Info — AFG3L2

Entrez GeneID	<a href="#">10939</a>
Protein Accession#	<a href="#">Q9Y4W6</a>
Gene Name	AFG3L2
Gene Alias	FLJ25993
Gene Description	AFG3 ATPase family gene 3-like 2 (yeast)
Omim ID	<a href="#">604581</a>
Gene Ontology	<a href="#">Hyperlink</a>

**Gene Summary**

This gene encodes a protein localized in mitochondria and closely related to paraplegin. The paraplegin gene is responsible for an autosomal recessive form of hereditary spastic paraplegia. This gene is a candidate gene for other hereditary spastic paraplegias or neurodegenerative disorders. [provided by RefSeq]

**Other Designations**

AFG3 (ATPase family gene 3, yeast)-like 2|AFG3 ATPase family gene 3-like 2|ATPase family gene 3, yeast|ATPase family gene 3-like 2