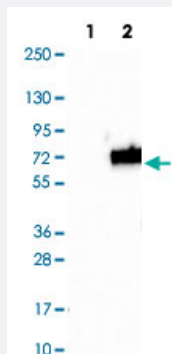


BIN1 polyclonal antibody

Catalog # PAB30648 Size 100 uL

Applications



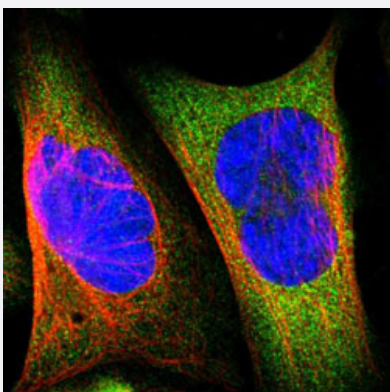
Western Blot (Transfected lysate)

Western Blot analysis of Lane 1: negative control (vector only transfected HEK293T cell lysate) and Lane 2: over-expression lysate (co-expressed with a C-terminal myc-DDK tag in mammalian HEK293T cells) with BIN1 polyclonal antibody (Cat # PAB30648).



Immunohistochemistry (Formalin/PFA-fixed paraffin-embedded sections)

Immunohistochemical staining (Formalin-fixed paraffin-embedded sections) of human skeletal muscle with BIN1 polyclonal antibody (Cat # PAB30648) shows strong cytoplasmic positivity in myocytes.



Immunofluorescence

Immunofluorescent staining of U-2 OS with BIN1 polyclonal antibody (Cat # PAB30648) (Green) shows positivity in cytoplasm.

Specification

Product Description	Rabbit polyclonal antibody raised against partial recombinant human BIN1.
Immunogen	Recombinant protein corresponding to human BIN1.
Sequence	SSLPAVVVETFPATVNGTVEGGSGAGRLDLPPGFMFKVQAQHDYTATDTDELQLKAGDVVLVIP FQNPEEQDEGWLMGVKESDWNQHKLEKCRGVFPENFTERVP
Host	Rabbit
Reactivity	Human
Form	Liquid
Purification	Antigen affinity purification
Isotype	IgG
Recommend Usage	Immunofluorescence (1-4 ug/mL) Immunohistochemistry (Formalin/PFA-fixed paraffin-embedded sections) (1:200-1:500) Western Blot (1:100-1:250) The optimal working dilution should be determined by the end user.
Storage Buffer	In PBS, pH 7.2 (40% glycerol, 0.02% sodium azide).
Storage Instruction	Store at 4°C. For long term storage store at -20°C. Aliquot to avoid repeated freezing and thawing.
Note	This product contains sodium azide: a POISONOUS AND HAZARDOUS SUBSTANCE which should be handled by trained staff only.

Applications

- Western Blot (Transfected lysate)

Western Blot analysis of Lane 1: negative control (vector only transfected HEK293T cell lysate) and Lane 2: over-expression lysate (co-expressed with a C-terminal myc-DDK tag in mammalian HEK293T cells) with BIN1 polyclonal antibody (Cat # PAB30648).

- Immunohistochemistry (Formalin/PFA-fixed paraffin-embedded sections)

Immunohistochemical staining (Formalin-fixed paraffin-embedded sections) of human skeletal muscle with BIN1 polyclonal antibody (Cat # PAB30648) shows strong cytoplasmic positivity in myocytes.

- Immunofluorescence

Immunofluorescent staining of U-2 OS with BIN1 polyclonal antibody (Cat # PAB30648) (Green) shows positivity in cytoplasm.

Gene Info — BIN1

Entrez GeneID [274](#)

Protein Accession# [O00499](#)

Gene Name BIN1

Gene Alias AMPH2, AMPHL, DKFZp547F068, MGC10367, SH3P9

Gene Description bridging integrator 1

Omim ID [255200 601248](#)

Gene Ontology [Hyperlink](#)

Gene Summary This gene encodes several isoforms of a nucleocytoplasmic adaptor protein, one of which was initially identified as a MYC-interacting protein with features of a tumor suppressor. Isoforms that are expressed in the central nervous system may be involved in synaptic vesicle endocytosis and may interact with dynamin, synaptotagmin, endophilin, and clathrin. Isoforms that are expressed in muscle and ubiquitously expressed isoforms localize to the cytoplasm and nucleus and activate a caspase-independent apoptotic process. Studies in mouse suggest that this gene plays an important role in cardiac muscle development. Alternate splicing of the gene results in ten transcript variants encoding different isoforms. Aberrant splice variants expressed in tumor cell lines have also been described. [provided by RefSeq]

Other Designations OTTHUMP00000162179|OTTHUMP00000162183|amphiphysin II|amphiphysin-like|box dependent MYC interacting protein 1

Disease

- [Alzheimer Disease](#)
- [Cerebral Hemorrhage](#)
- [Cognition Disorders](#)
- [Genetic Predisposition to Disease](#)
- [Hypertension](#)
- [Intracranial Hemorrhages](#)
- [Neuropsychological Tests](#)
- [Stroke](#)
- [Subarachnoid Hemorrhage](#)