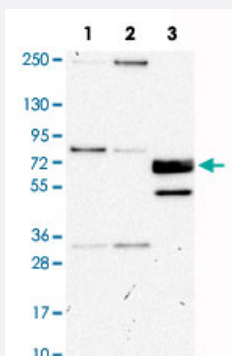


CUX1 polyclonal antibody

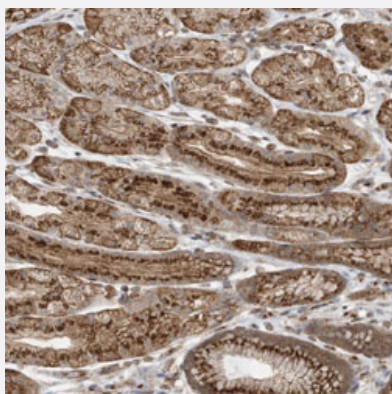
Catalog # PAB30618 Size 100 uL

Applications



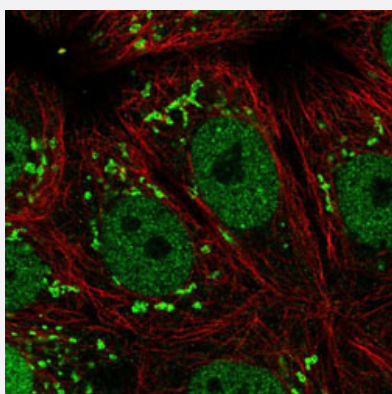
Western Blot

Western Blot analysis of Lane 1: RT-4, Lane 2: U-251MG sp and Lane 3: human plasma (IgG/HSA depleted) with CUX1 polyclonal antibody (Cat # PAB30618).



Immunohistochemistry (Formalin/PFA-fixed paraffin-embedded sections)

Immunohistochemical staining (Formalin-fixed paraffin-embedded sections) of human stomach, upper with CUX1 polyclonal antibody (Cat # PAB30618) shows strong cytoplasmic positivity in glandular cells.



Immunofluorescence

Immunofluorescent staining of MCF7 cells with CUX1 polyclonal antibody (Cat # PAB30618) (Green) shows positivity in the Golgi apparatus and nucleus but excluded from the nucleoli.

Specification

Product Description	Rabbit polyclonal antibody raised against partial recombinant human CUX1.
Immunogen	Recombinant protein corresponding to human CUX1.
Sequence	KSFQGEIDALSKRSKEAEEAFLNVYKRLIDVPDPVPALDLGQQQLQLKVQRLHDIETENQKLRETL EYNKEFAEVKNQEVTIKALKEKIREYEQLTKNQAETIALEKEQKLQNDFAEKERKLQETQMSTTSK LEEAEHKVQSLQTALE
Host	Rabbit
Reactivity	Human
Form	Liquid
Purification	Antigen affinity purification
Isotype	IgG
Recommend Usage	Immunofluorescence (1-4 ug/mL) Immunohistochemistry (Formalin/PFA-fixed paraffin-embedded sections) (1:50-1:200) Western Blot (1:100-1:250) The optimal working dilution should be determined by the end user.
Storage Buffer	In PBS, pH 7.2 (40% glycerol, 0.02% sodium azide).
Storage Instruction	Store at 4°C. For long term storage store at -20°C. Aliquot to avoid repeated freezing and thawing.
Note	This product contains sodium azide: a POISONOUS AND HAZARDOUS SUBSTANCE which should be handled by trained staff only.

Applications

- Western Blot

Western Blot analysis of Lane 1: RT-4, Lane 2: U-251MG sp and Lane 3: human plasma (IgG/HSA depleted) with CUX1 polyclonal antibody (Cat # PAB30618).

- Immunohistochemistry (Formalin/PFA-fixed paraffin-embedded sections)

Immunohistochemical staining (Formalin-fixed paraffin-embedded sections) of human stomach, upper with CUX1 polyclonal antibody (Cat # PAB30618) shows strong cytoplasmic positivity in glandular cells.

- Immunofluorescence

Immunofluorescent staining of MCF7 cells with CUX1 polyclonal antibody (Cat # PAB30618) (Green) shows positivity in the Golgi apparatus and nucleus but excluded from the nucleoli.

Gene Info — CUX1

Entrez GeneID	1523
Protein Accession#	P39880
Gene Name	CUX1
Gene Alias	CASP, CDP, CDP/Cut, CDP1, COY1, CUTL1, CUX, Clox, Cux/CDP, GOLIM6, Nbla10317, p100, p110, p200, p75
Gene Description	cut-like homeobox 1
Omim ID	116896
Gene Ontology	Hyperlink
Gene Summary	The protein encoded by this gene is a member of the homeodomain family of DNA binding proteins. It may regulate gene expression, morphogenesis, and differentiation and it may also play a role in the cell cycle progression. Several alternatively spliced transcript variants of this gene have been described, but the full-length nature of some of these variants has not been determined. [provided by RefSeq]
Other Designations	cut homeobox cut homolog cut-like 1, CCAAT displacement protein golgi integral membrane protein 6 putative protein product of Nbla10317

Disease

- [Tobacco Use Disorder](#)