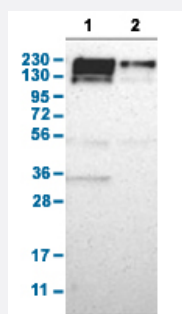


# PARP4 polyclonal antibody

Catalog # PAB30582

Size 100 uL

## Applications

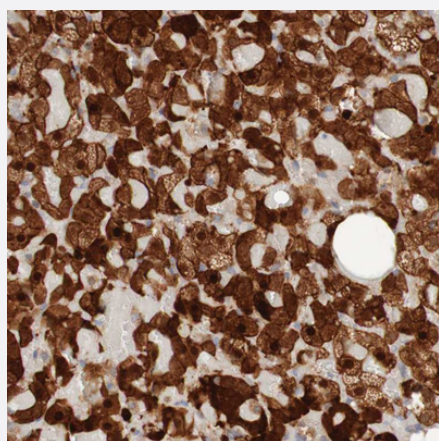


### Western Blot (Cell lysate)

Western Blot analysis with PARP4 polyclonal antibody (Cat # PAB30582).

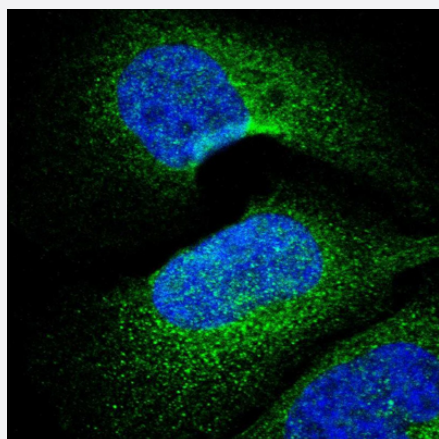
Lane 1: Human cell line RT-4

Lane 2: Human cell line U-251MG sp



### Immunohistochemistry (Formalin/PFA-fixed paraffin-embedded sections)

Immunohistochemical staining (Formalin-fixed paraffin-embedded sections) of human adrenal gland with PARP4 polyclonal antibody (Cat # PAB30582) shows strong nuclear and cytoplasmic positivity in cortical cells.



### Immunofluorescence

Immunofluorescent staining of human cell line U-2 OS with PARP4 polyclonal antibody (Cat # PAB30582) shows positivity in cytoplasm. Antibody staining is shown in green.

## Specification

|                            |   |
|----------------------------|---|
| <b>Product Description</b> | Rabbit polyclonal antibody raised against partial recombinant human PARP4.  |
| <b>Immunogen</b>           | Recombinant protein corresponding to amino acids 247-392 of human PARP4.  |
| <b>Sequence</b>            | ALLLEEVMNSSTLSQEVSDLVEMIWAEALGHLEHMLLKPVNRISLNDVSKAEGILLLVKAALKNGE<br>TAEQLQKMMTEFYRLIPHKGTMPKEVNLGLLAKKADLCQLIRDMVNV CETNLSKPNPPSLAKYRA<br>LRCKIEHVEQNTEEF   |
| <b>Host</b>                | Rabbit  |
| <b>Reactivity</b>          | Human   |
| <b>Form</b>                | Liquid  |
| <b>Purification</b>        | Antigen affinity purification   |
| <b>Isotype</b>             | IgG   |
| <b>Recommend Usage</b>     | Immunofluorescence (1 - 4 ug/mL)<br>Immunohistochemistry (Formalin/PFA-fixed paraffin-embedded sections) (1:50 - 1:200)<br>Western Blot (1:100 - 1:250)<br>The optimal working dilution should be determined by the end user. |
| <b>Storage Buffer</b>      | In PBS, pH 7.2 (40% glycerol, 0.02% sodium azide).  |
| <b>Storage Instruction</b> | Store at 4°C for short term storage. For long term storage store at -20°C.<br>Aliquot to avoid repeated freezing and thawing.   |
| <b>Note</b>                | This product contains sodium azide: a POISONOUS AND HAZARDOUS SUBSTANCE which should be handled by trained staff only.  |

## Applications

- Western Blot (Cell lysate)

Western Blot analysis with PARP4 polyclonal antibody (Cat # PAB30582).

Lane 1: Human cell line RT-4

Lane 2: Human cell line U-251MG sp

- Immunohistochemistry (Formalin/PFA-fixed paraffin-embedded sections)

Immunohistochemical staining (Formalin-fixed paraffin-embedded sections) of human adrenal gland with PARP4 polyclonal antibody (Cat # PAB30582) shows strong nuclear and cytoplasmic positivity in cortical cells.

- Immunofluorescence

Immunofluorescent staining of human cell line U-2 OS with PARP4 polyclonal antibody (Cat # PAB30582) shows positivity in cytoplasm. Antibody staining is shown in green.

## Gene Info — PARP4

Entrez GeneID [143](#)

Protein Accession# [Q9UKK3](#)

Gene Name PARP4

Gene Alias ADPRTL1, PARPL, PH5P, VAULT3, VPARP, VWA5C, p193

Gene Description poly (ADP-ribose) polymerase family, member 4

Omim ID [607519](#)

Gene Ontology [Hyperlink](#)

**Gene Summary** This gene encodes poly(ADP-ribosyl)transferase-like 1 protein, which is capable of catalyzing a poly(ADP-ribosyl)ation reaction. This protein has a catalytic domain which is homologous to that of poly (ADP-ribosyl) transferase, but lacks an N-terminal DNA binding domain which activates the C-terminal catalytic domain of poly (ADP-ribosyl) transferase. Since this protein is not capable of binding DNA directly, its transferase activity may be activated by other factors such as protein-protein interaction mediated by the extensive carboxyl terminus. [provided by RefSeq]

**Other Designations** ADP-ribosyltransferase (NAD+; poly (ADP-ribose) polymerase)-like 1|H5 proline-rich|-alpha-I-related|OTTHUMP00000018130|OTTHUMP00000042288|PARP-related|poly(ADP-ribose) synthetase|poly(ADP-ribosyl)transferase-like 1|vault protein, 193-kDa|von Willebrand f

## Pathway

- [Base excision repair](#)

## Disease

- [Ataxia telangiectasia](#)
- [Colorectal Neoplasms](#)
- [DNA Damage](#)

- [Genetic Predisposition to Disease](#)
- [Lung Neoplasms](#)
- [Pulmonary Disease](#)
- [Tobacco Use Disorder](#)
- [Urinary Bladder Neoplasms](#)
- [Werner syndrome](#)