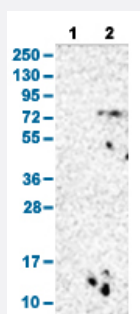


# AFP polyclonal antibody

Catalog # PAB30577      Size 100 uL

## Applications

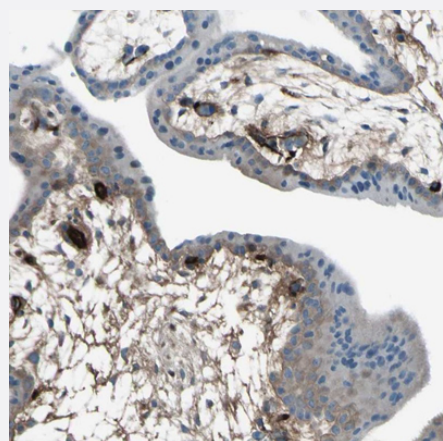


### Western Blot (Transfected lysate)

Western Blot analysis with AFP polyclonal antibody (Cat # PAB30577).

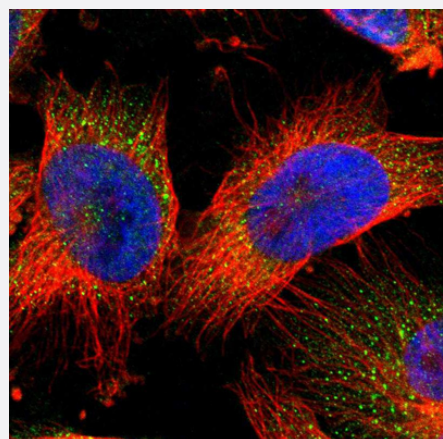
Lane 1: Negative control (vector only transfected HEK293T lysate)

Lane 2: Over-expression lysate (Co-expressed with a C-terminal myc-DDK tag (~3.1 kDa) in mammalian HEK293T cells)



### Immunohistochemistry (Formalin/PFA-fixed paraffin-embedded sections)

Immunohistochemical staining (Formalin-fixed paraffin-embedded sections) of human placenta with AFP polyclonal antibody (Cat # PAB30577) shows extra cellular positivity.



### Immunofluorescence

Immunofluorescent staining of human cell line U-251 MG with AFP polyclonal antibody (Cat # PAB30577) shows positivity in cytoplasm. Antibody staining is shown in green.

## Specification

<b>Product Description</b>	Rabbit polyclonal antibody raised against partial recombinant human AFP.
<b>Immunogen</b>	Recombinant protein corresponding to amino acids 51-184 of human AFP.
<b>Sequence</b>	FAQFVQEATYKEVSKMVKDALTAIEKPTGDEQSSGCLENQLPAFLEELCHEKEILEKYGHSDCCS QSEEGRHNCFLAHKKPTPASIPLFQVPEPVTSCAEYEDRETFMNKFYEIARRHPFLYAPTILLWA AR
<b>Host</b>	Rabbit
<b>Reactivity</b>	Human
<b>Form</b>	Liquid
<b>Purification</b>	Antigen affinity purification
<b>Isotype</b>	IgG
<b>Recommend Usage</b>	Immunofluorescence (1 - 4 ug/mL) Immunohistochemistry (Formalin/PFA-fixed paraffin-embedded sections) (1:200 - 1:500) Western Blot (1:100 - 1:250) The optimal working dilution should be determined by the end user.
<b>Storage Buffer</b>	In PBS, pH 7.2 (40% glycerol, 0.02% sodium azide).
<b>Storage Instruction</b>	Store at 4°C for short term storage. For long term storage store at -20°C. Aliquot to avoid repeated freezing and thawing.
<b>Note</b>	This product contains sodium azide: a POISONOUS AND HAZARDOUS SUBSTANCE which should be handled by trained staff only.

## Applications

- Western Blot (Transfected lysate)

Western Blot analysis with AFP polyclonal antibody (Cat # PAB30577).

Lane 1: Negative control (vector only transfected HEK293T lysate)

Lane 2: Over-expression lysate (Co-expressed with a C-terminal myc-DDK tag (~3.1 kDa) in mammalian HEK293T cells)

- Immunohistochemistry (Formalin/PFA-fixed paraffin-embedded sections)

Immunohistochemical staining (Formalin-fixed paraffin-embedded sections) of human placenta with AFP polyclonal antibody (Cat # PAB30577) shows extra cellular positivity.

- Immunofluorescence

Immunofluorescent staining of human cell line U-251 MG with AFP polyclonal antibody (Cat # PAB30577) shows positivity in cytoplasm. Antibody staining is shown in green.

## Gene Info — AFP

**Entrez GeneID** [174](#)

**Protein Accession#** [P02771](#)

**Gene Name** AFP

**Gene Alias** FETA, HPAFP

**Gene Description** alpha-fetoprotein

**Omim ID** [104150](#)

**Gene Ontology** [Hyperlink](#)

**Gene Summary** This gene encodes alpha-fetoprotein, a major plasma protein produced by the yolk sac and the liver during fetal life. Alpha-fetoprotein expression in adults is often associated with hepatoma or teratoma. However, hereditary persistence of alpha-fetoprotein may also be found in individuals with no obvious pathology. The protein is thought to be the fetal counterpart of serum albumin, and the alpha-fetoprotein and albumin genes are present in tandem in the same transcriptional orientation on chromosome 4. Alpha-fetoprotein is found in monomeric as well as dimeric and trimeric forms, and binds copper, nickel, fatty acids and bilirubin. The level of alpha-fetoprotein in amniotic fluid is used to measure renal loss of protein to screen for spina bifida and anencephaly. [provided by RefSeq]

**Other Designations** OTTHUMP00000160480|alpha-1-fetoprotein|alpha-fetoglobulin

## Disease

- [Carcinoma](#)
- [Liver Cirrhosis](#)
- [Liver Neoplasms](#)