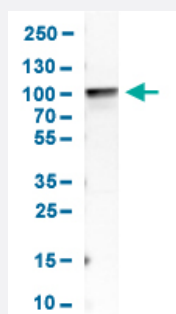


# HSF1 polyclonal antibody

Catalog # PAB30566

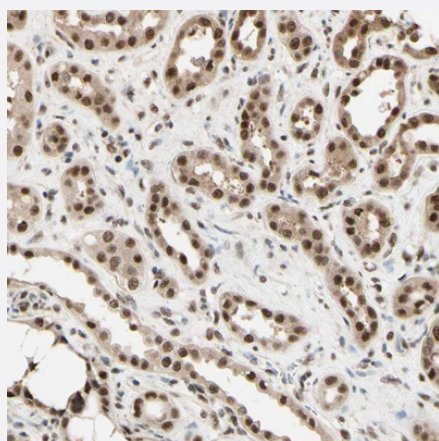
Size 100 uL

## Applications



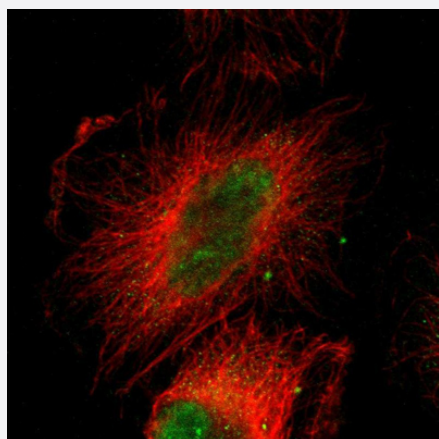
### Western Blot (Cell lysate)

Western Blot analysis of human cell line PC-3 with HSF1 polyclonal antibody (Cat # PAB30566).



### Immunohistochemistry (Formalin/PFA-fixed paraffin-embedded sections)

Immunohistochemical staining (Formalin-fixed paraffin-embedded sections) of human kidney with HSF1 polyclonal antibody (Cat # PAB30566) shows strong nuclear and moderate cytoplasmic positivity in cells in tubules.



### Immunofluorescence

Immunofluorescent staining of human cell line U-251 MG with HSF1 polyclonal antibody (Cat # PAB30566) shows positivity in cytoplasm and nucleus but excluded from the nucleoli. Antibody staining is shown in green.

## Specification

<b>Product Description</b>	Rabbit polyclonal antibody raised against partial recombinant human HSF1.
<b>Immunogen</b>	Recombinant protein corresponding to amino acids 13-160 of human HSF1.
<b>Sequence</b>	SNVPAFLTKLWTLVSDPDTDALICWSPSGNSFHVFDQGGFAKEVLPKYFKHNNMASFVRQLNMY GFRKVVHIEQGGLVKPERDDTEFQHPCFLRGQEQLLENIKRKVTSVSTLKSEDIKIRQDSVTKLLT DVQLMKGKQECMDSKLLA
<b>Host</b>	Rabbit
<b>Reactivity</b>	Human
<b>Form</b>	Liquid
<b>Purification</b>	Antigen affinity purification
<b>Isotype</b>	IgG
<b>Recommend Usage</b>	Immunofluorescence (1 - 4 ug/mL) Immunohistochemistry (Formalin/PFA-fixed paraffin-embedded sections) (1:200 - 1:500) Western Blot (1:100 - 1:250) The optimal working dilution should be determined by the end user.
<b>Storage Buffer</b>	In PBS, pH 7.2 (40% glycerol, 0.02% sodium azide).
<b>Storage Instruction</b>	Store at 4°C for short term storage. For long term storage store at -20°C. Aliquot to avoid repeated freezing and thawing.
<b>Note</b>	This product contains sodium azide: a POISONOUS AND HAZARDOUS SUBSTANCE which should be handled by trained staff only.

## Applications

- Western Blot (Cell lysate)

Western Blot analysis of human cell line PC-3 with HSF1 polyclonal antibody (Cat # PAB30566).

- Immunohistochemistry (Formalin/PFA-fixed paraffin-embedded sections)

Immunohistochemical staining (Formalin-fixed paraffin-embedded sections) of human kidney with HSF1 polyclonal antibody (Cat # PAB30566) shows strong nuclear and moderate cytoplasmic positivity in cells in tubules.

- Immunofluorescence

Immunofluorescent staining of human cell line U-251 MG with HSF1 polyclonal antibody (Cat # PAB30566) shows positivity in cytoplasm and nucleus but excluded from the nucleoli. Antibody staining is shown in green.

## Gene Info — HSF1

Entrez GeneID	<a href="#">3297</a>
Protein Accession#	<a href="#">Q00613</a>
Gene Name	HSF1
Gene Alias	HSTF1
Gene Description	heat shock transcription factor 1
Omim ID	<a href="#">140580</a>
Gene Ontology	<a href="#">Hyperlink</a>
Gene Summary	The product of this gene is a heat-shock transcription factor. Transcription of heat-shock genes is rapidly induced after temperature stress. Hsp90, by itself and/or associated with multichaperone complexes, is a major repressor of this gene. [provided by RefSeq]
Other Designations	-