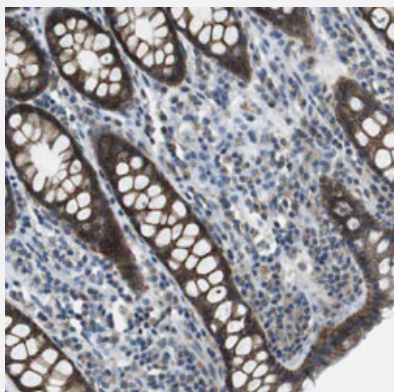


CLDN7 polyclonal antibody

Catalog # PAB30489

Size 100 uL

Applications



Immunohistochemistry (Formalin/PFA-fixed paraffin-embedded sections)

Immunohistochemical staining (Formalin-fixed paraffin-embedded sections) of human rectum with CLDN7 polyclonal antibody (Cat # PAB30489) shows strong membranous and cytoplasmic positivity in glandular cells at 1:20-1:50 dilution.

Specification

Product Description	Rabbit polyclonal antibody raised against partial recombinant human CLDN7.
Immunogen	Recombinant protein corresponding to human CLDN7.
Sequence	PQWQMSSYAGDNIITAQAMYKGLWMDCVTQSTGMMSCCKMYDSVLALS
Host	Rabbit
Reactivity	Human
Form	Liquid
Purification	Antigen affinity purification
Isotype	IgG
Recommend Usage	Immunohistochemistry (Formalin/PFA-fixed paraffin-embedded sections) (1:20-1:50) The optimal working dilution should be determined by the end user.
Storage Buffer	In PBS, pH 7.2 (40% glycerol, 0.02% sodium azide).

Storage Instruction

Store at 4°C. For long term storage store at -20°C.
Aliquot to avoid repeated freezing and thawing.

Note

This product contains sodium azide: a POISONOUS AND HAZARDOUS SUBSTANCE which should be handled by trained staff only.

Applications

- Immunohistochemistry (Formalin/PFA-fixed paraffin-embedded sections)

Immunohistochemical staining (Formalin-fixed paraffin-embedded sections) of human rectum with CLDN7 polyclonal antibody (Cat # PAB30489) shows strong membranous and cytoplasmic positivity in glandular cells at 1:20-1:50 dilution.

Gene Info — CLDN7

Entrez GeneID [1366](#)

Protein Accession# [O95471](#)

Gene Name CLDN7

Gene Alias CEPTRL2, CPETRL2, Hs.84359, claudin-1

Gene Description claudin 7

Omim ID [609131](#)

Gene Ontology [Hyperlink](#)

Gene Summary Claudins, such as CLDN7, are involved in the formation of tight junctions between epithelial cells. Tight junctions restrict lateral diffusion of lipids and membrane proteins, and thereby physically define the border between the apical and basolateral compartments of epithelial cells (Zheng et al., 2003 [PubMed 14502431]).[supplied by OMIM]

Other Designations Clostridium perfringens enterotoxin receptor-like 2|claudin 9

Pathway

- [Cell adhesion molecules \(CAMs\)](#)
- [Leukocyte transendothelial migration](#)
- [Tight junction](#)