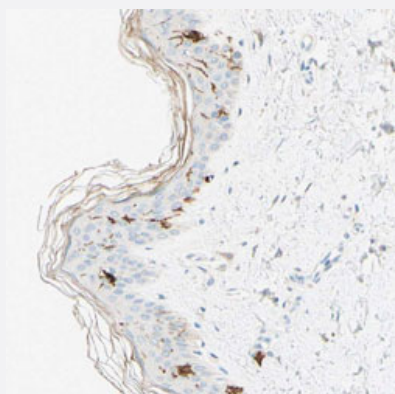


CD1A polyclonal antibody

Catalog # PAB30436 Size 100 uL

Applications



Immunohistochemistry (Formalin/PFA-fixed paraffin-embedded sections)

Immunohistochemical staining (Formalin-fixed paraffin-embedded sections) of human skin with CD1A polyclonal antibody (Cat # PAB30436) shows distinct positivity in Langerhans cells at 1:50-1:200 dilution.

Specification

Product Description	Rabbit polyclonal antibody raised against partial recombinant human CD1A.
Immunogen	Recombinant protein corresponding to human CD1A.
Sequence	QNLVSGWLSDLQHTWDSNSSTVFLCPWSRGNFSNEEWKELETFRIRTIRSFEGIRRYAHELQF EYPFEIQVTGGCELHSGKVSFSGSFLQLAYQGSDFVSFQNNSWLPYPVAGNMAKHFCVKVLNQNH END
Host	Rabbit
Reactivity	Human
Form	Liquid
Purification	Antigen affinity purification
Isotype	IgG
Recommend Usage	Immunohistochemistry (Formalin/PFA-fixed paraffin-embedded sections) (1:50-1:200) The optimal working dilution should be determined by the end user.

Storage Buffer	In PBS, pH 7.2 (40% glycerol, 0.02% sodium azide).
Storage Instruction	Store at 4°C. For long term storage store at -20°C. Aliquot to avoid repeated freezing and thawing.
Note	This product contains sodium azide: a POISONOUS AND HAZARDOUS SUBSTANCE which should be handled by trained staff only.

Applications

- Immunohistochemistry (Formalin/PFA-fixed paraffin-embedded sections)

Immunohistochemical staining (Formalin-fixed paraffin-embedded sections) of human skin with CD1A polyclonal antibody (Cat # PAB30436) shows distinct positivity in Langerhans cells at 1:50-1:200 dilution.

Gene Info — CD1A

Entrez GeneID	909
Protein Accession#	P06126
Gene Name	CD1A
Gene Alias	CD1, FCB6, HTA1, R4, T6
Gene Description	CD1a molecule
Omim ID	188370
Gene Ontology	Hyperlink

Gene Summary	This gene encodes a member of the CD1 family of transmembrane glycoproteins, which are structurally related to the major histocompatibility complex (MHC) proteins and form heterodimers with beta-2-microglobulin. The CD1 proteins mediate the presentation of primarily lipid and glycolipid antigens of self or microbial origin to T cells. The human genome contains five CD1 family genes organized in a cluster on chromosome 1. The CD1 family members are thought to differ in their cellular localization and specificity for particular lipid ligands. The protein encoded by this gene localizes to the plasma membrane and to recycling vesicles of the early endocytic system. Alternatively spliced transcript variants have been observed, but their biological validity has not been determined. [provided by RefSeq]
--------------	---

Other Designations	CD1A antigen CD1A antigen, a polypeptide OTTHUMP00000018907 T-cell surface antigen T6/L eu-6 T-cell surface glycoprotein CD1a cluster of differentiation 1 A cortical thymocyte antigen CD1 A differentiation antigen CD1-alpha-3 epidermal dendritic cell marker
--------------------	---

Pathway

- [Hematopoietic cell lineage](#)

Disease

- [Campylobacter Infections](#)
- [Genetic Predisposition to Disease](#)
- [Guillain-Barre Syndrome](#)
- [Lung Diseases](#)
- [Mycobacterium Infections](#)
- [Polyradiculoneuropathy](#)