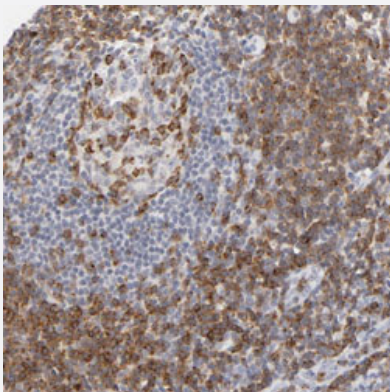


# CD2 polyclonal antibody

Catalog # PAB30359      Size 100 uL

## Applications



### Immunohistochemistry (Formalin/PFA-fixed paraffin-embedded sections)

Immunohistochemical staining (Formalin-fixed paraffin-embedded sections) of human tonsil with CD2 polyclonal antibody (Cat # PAB30359) shows moderate cytoplasmic positivity in reaction center cells and lymphoid cells outside reaction centra at 1:500-1:1000 dilution.

## Specification

Product Description	Rabbit polyclonal antibody raised against partial recombinant human CD2.
Immunogen	Recombinant protein corresponding to human CD2.
Sequence	DEELETRAHRVATEERGRKPHQIPASTPQNPATSQHPPPPGHRSQAPSHRPPPPGHRVQHQP QKRPPAPSGTQVHQKGPPLPRPRVQPKPPHGAAENSLSP
Host	Rabbit
Reactivity	Human
Form	Liquid
Purification	Antigen affinity purification
Isotype	IgG
Recommend Usage	Immunohistochemistry (Formalin/PFA-fixed paraffin-embedded sections) (1:500-1:1000) The optimal working dilution should be determined by the end user.
Storage Buffer	In PBS, pH 7.2 (40% glycerol, 0.02% sodium azide).

**Storage Instruction**

Store at 4°C. For long term storage store at -20°C.  
Aliquot to avoid repeated freezing and thawing.

**Note**

This product contains sodium azide: a POISONOUS AND HAZARDOUS SUBSTANCE which should be handled by trained staff only.

## Applications

- Immunohistochemistry (Formalin/PFA-fixed paraffin-embedded sections)

Immunohistochemical staining (Formalin-fixed paraffin-embedded sections) of human tonsil with CD2 polyclonal antibody (Cat # PAB30359) shows moderate cytoplasmic positivity in reaction center cells and lymphoid cells outside reaction centra at 1:500-1:1000 dilution.

## Gene Info — CD2

**Entrez GeneID** [914](#)

**Protein Accession#** [P06729](#)

**Gene Name** CD2

**Gene Alias** SRBC, T11

**Gene Description** CD2 molecule

**Omim ID** [186990](#)

**Gene Ontology** [Hyperlink](#)

**Gene Summary** sheep red blood cell receptor|OTTHUMP00000024366|OTTHUMP00000059318|lymphocyte-function antigen-2

**Other Designations** CD2 antigen (p50), sheep red blood cell receptor|OTTHUMP00000024366|OTTHUMP00000059318|lymphocyte-function antigen-2

## Pathway

- [Cell adhesion molecules \(CAMs\)](#)
- [Hematopoietic cell lineage](#)

## Disease

- [Arthritis](#)
- [Genetic Predisposition to Disease](#)