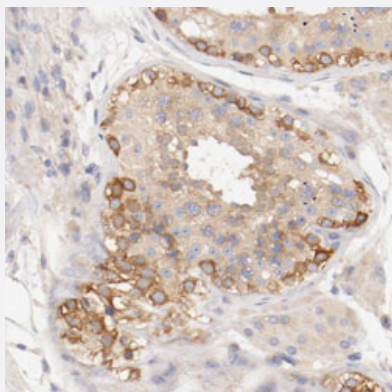


# DYNC1H1 polyclonal antibody

Catalog # PAB30356

Size 100 uL

## Applications



### Immunohistochemistry (Formalin/PFA-fixed paraffin-embedded sections)

Immunohistochemical staining (Formalin-fixed paraffin-embedded sections) of human testis with DYNC1H1 polyclonal antibody (Cat # PAB30356) shows strong cytoplasmic positivity in basal cells of the seminiferous ducts at 1:50-1:200 dilution.

## Specification

Product Description	Rabbit polyclonal antibody raised against partial recombinant human DYNC1H1.
Immunogen	Recombinant protein corresponding to human DYNC1H1.
Sequence	RSLETCTMYDHKTFSEILNRVQKAVDDLNLHSYSNLPWVNKLDMEIERILGVRLQAGLRAWTQVLL GQAEDKAEVDMDTDAPQVSHKPGGEPKIKNVVHELRTNQVYMLNPPIEECRYKLYQEMFAWKMV VLSLPRIQSQR
Host	Rabbit
Reactivity	Human
Form	Liquid
Purification	Antigen affinity purification
Isotype	IgG
Recommend Usage	Immunohistochemistry (Formalin/PFA-fixed paraffin-embedded sections) (1:50-1:200) The optimal working dilution should be determined by the end user.

<b>Storage Buffer</b>	In PBS, pH 7.2 (40% glycerol, 0.02% sodium azide).
<b>Storage Instruction</b>	Store at 4°C. For long term storage store at -20°C. Aliquot to avoid repeated freezing and thawing.
<b>Note</b>	This product contains sodium azide: a POISONOUS AND HAZARDOUS SUBSTANCE which should be handled by trained staff only.

## Applications

- Immunohistochemistry (Formalin/PFA-fixed paraffin-embedded sections)

Immunohistochemical staining (Formalin-fixed paraffin-embedded sections) of human testis with DYNC1H1 polyclonal antibody (Cat # PAB30356) shows strong cytoplasmic positivity in basal cells of the seminiferous ducts at 1:50-1:200 dilution.

## Gene Info — DYNC1H1

<b>Entrez GeneID</b>	<a href="#">1778</a>
<b>Protein Accession#</b>	<a href="#">Q14204</a>
<b>Gene Name</b>	DYNC1H1
<b>Gene Alias</b>	DHC1, DHC1a, DKFZp686P2245, DNCH1, DNCL, DNECL, DYHC, Dnchc1, HL-3, KIAA0325, p22
<b>Gene Description</b>	dynein, cytoplasmic 1, heavy chain 1
<b>Omim ID</b>	<a href="#">600112</a>
<b>Gene Ontology</b>	<a href="#">Hyperlink</a>
<b>Gene Summary</b>	Dyneins are a group of microtubule-activated ATPases that function as molecular motors. They are divided into two subgroups of axonemal and cytoplasmic dyneins. The cytoplasmic dyneins function in intracellular motility, including retrograde axonal transport, protein sorting, organelle movement, and spindle dynamics. Molecules of conventional cytoplasmic dynein are comprised of 2 heavy chain polypeptides and a number of intermediate and light chains. This gene encodes a member of the cytoplasmic dynein heavy chain family. [provided by RefSeq]
<b>Other Designations</b>	cytoplasmic dynein 1 heavy chain 1 dynein heavy chain, cytosolic dynein, cytoplasmic, heavy polypeptide 1 dynein, cytoplasmic-like

## Disease

- [Amyotrophic lateral sclerosis](#)

- [Genetic Predisposition to Disease](#)
- [Narcolepsy](#)