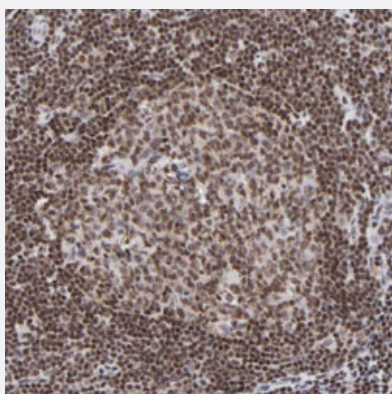


ZNF143 polyclonal antibody

Catalog # PAB30335 Size 100 uL

Applications



Immunohistochemistry (Formalin/PFA-fixed paraffin-embedded sections)

Immunohistochemical staining (Formalin-fixed paraffin-embedded sections) of human lymph node with ZNF143 polyclonal antibody (Cat # PAB30335) shows moderate nuclear positivity in reaction center cells and lymphoid cells outside reaction center at 1:20-1:50 dilution.

Specification

Product Description	Rabbit polyclonal antibody raised against partial recombinant human ZNF143.
Immunogen	Recombinant protein corresponding to human ZNF143.
Sequence	TQSGLSQQVTLISQDGTQHVNISQADMQAIGNTITMTQDGTPTVPAHDAVISSAGTHSVAMVTAE GTEGQQVAIVAQDLAAFHTASSEMGHQHSHHLVTTETRPLTLVATSNGTQIAVQLGEQPSLEEAI RIASRIQQGET
Host	Rabbit
Reactivity	Human
Form	Liquid
Purification	Antigen affinity purification
Isotype	IgG
Recommend Usage	Immunohistochemistry (Formalin/PFA-fixed paraffin-embedded sections) (1:20-1:50) The optimal working dilution should be determined by the end user.

Storage Buffer	In PBS, pH 7.2 (40% glycerol, 0.02% sodium azide).
Storage Instruction	Store at 4°C. For long term storage store at -20°C. Aliquot to avoid repeated freezing and thawing.
Note	This product contains sodium azide: a POISONOUS AND HAZARDOUS SUBSTANCE which should be handled by trained staff only.

Applications

- Immunohistochemistry (Formalin/PFA-fixed paraffin-embedded sections)

Immunohistochemical staining (Formalin-fixed paraffin-embedded sections) of human lymph node with ZNF143 polyclonal antibody (Cat # PAB30335) shows moderate nuclear positivity in reaction center cells and lymphoid cells outside reaction center at 1:20-1:50 dilution.

Gene Info — ZNF143

Entrez GeneID	7702
Protein Accession#	P52747
Gene Name	ZNF143
Gene Alias	SBF, STAF, pHZ-1
Gene Description	zinc finger protein 143
Omim ID	603433
Gene Ontology	Hyperlink
Other Designations	OTTHUMP00000195124 SPH-binding factor transcriptional activator Staf