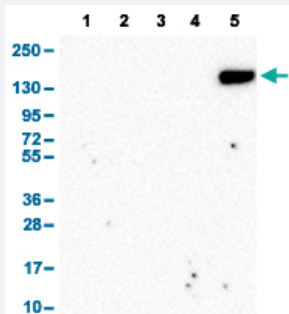


# CR2 polyclonal antibody

Catalog # PAB30297      Size 100 uL

## Applications



### Western Blot

Western Blot analysis with CR2 polyclonal antibody (Cat # PAB30297).

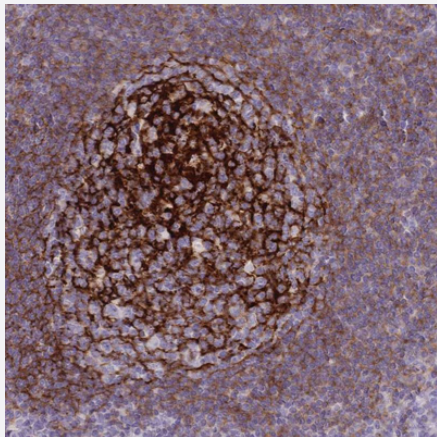
Lane 1: Human cell line RT-4

Lane 2: Human cell line U-251MG

Lane 3: Human plasma

Lane 4: Human liver tissue

Lane 5: Human tonsil tissue



### Immunohistochemistry (Formalin/PFA-fixed paraffin-embedded sections)

Immunohistochemical staining (Formalin-fixed paraffin-embedded sections) of human tonsil with CR2 polyclonal antibody (Cat # PAB30297) shows strong cytoplasmic positivity in germinal center cells.

## Specification

<b>Product Description</b>	Rabbit polyclonal antibody raised against partial recombinant human CR2.
<b>Immunogen</b>	Recombinant protein corresponding to amino acids 46-129 of human CR2.
<b>Sequence</b>	VIRYSCSGTFRLLIGEKSLLCITKDKVDGTWDPAPKCEYFNKYSSCPEPMPGGYKIRGSTPYRHGD SVTFACKTNFSMNGNKS
<b>Host</b>	Rabbit
<b>Reactivity</b>	Human

Form	Liquid
Purification	Antigen affinity purification
Isotype	IgG
Recommend Usage	Immunohistochemistry (Formalin/PFA-fixed paraffin-embedded sections) (1:200 - 1:500) Western Blot (1:250 - 1:500) The optimal working dilution should be determined by the end user.
Storage Buffer	In PBS, pH 7.2 (40% glycerol, 0.02% sodium azide).
Storage Instruction	Store at 4°C for short term storage. For long term storage store at -20°C. Aliquot to avoid repeated freezing and thawing.
Note	This product contains sodium azide: a POISONOUS AND HAZARDOUS SUBSTANCE which should be handled by trained staff only.

## Applications

- Western Blot

Western Blot analysis with CR2 polyclonal antibody (Cat # PAB30297).

Lane 1: Human cell line RT-4

Lane 2: Human cell line U-251MG

Lane 3: Human plasma

Lane 4: Human liver tissue

Lane 5: Human tonsil tissue

- Immunohistochemistry (Formalin/PFA-fixed paraffin-embedded sections)

Immunohistochemical staining (Formalin-fixed paraffin-embedded sections) of human tonsil with CR2 polyclonal antibody (Cat # PAB30297) shows strong cytoplasmic positivity in germinal center cells.

## Gene Info — CR2

Entrez GeneID	<a href="#">1380</a>
Protein Accession#	<a href="#">P20023</a>
Gene Name	CR2
Gene Alias	C3DR, CD21, SLEB9
Gene Description	complement component (3d/Epstein Barr virus) receptor 2
Omim ID	<a href="#">120650 610927</a>

## Gene Ontology

[Hyperlink](#)

## Gene Summary

Complement component receptor-2 (CR2) is the membrane protein on B lymphocytes to which the Epstein-Barr virus (EBV) binds during infection of these cells. See also CR1 (MIM 120620). Yef enof et al. (1976) [PubMed 181330] found complete overlapping of EBV receptors and C3 (MIM 120700) receptors on human B lymphocytes.[supplied by OMIM]

## Other Designations

OTTHUMP00000034421|OTTHUMP00000034447

## Pathway

- [B cell receptor signaling pathway](#)
- [Complement and coagulation cascades](#)
- [Hematopoietic cell lineage](#)

## Disease

- [Genetic Predisposition to Disease](#)
- [Lupus Erythematosus](#)
- [Lymphoma](#)
- [Macular Degeneration](#)
- [Nasopharyngeal Neoplasms](#)
- [Parkinson disease](#)