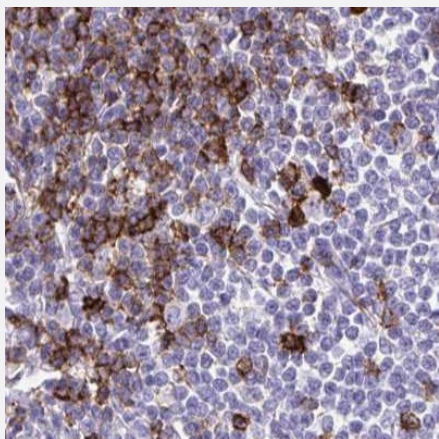


SPN polyclonal antibody

Catalog # PAB30289

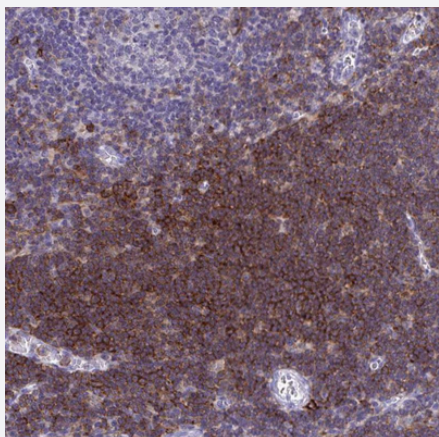
Size 100 uL

Applications



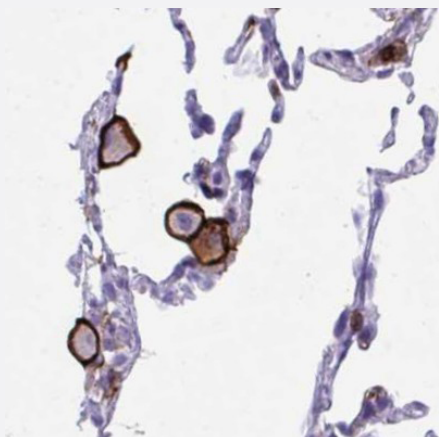
Immunohistochemistry (Formalin/PFA-fixed paraffin-embedded sections)

Immunohistochemical staining (Formalin-fixed paraffin-embedded sections) of human lymphoma with SPN polyclonal antibody (Cat # PAB30289) shows strong cytoplasmic positivity in a subset of tumor cells.



Immunohistochemistry (Formalin/PFA-fixed paraffin-embedded sections)

Immunohistochemical staining (Formalin-fixed paraffin-embedded sections) of human lymph node with SPN polyclonal antibody (Cat # PAB30289) shows strong cytoplasmic positivity in non-germinal center cells.



Immunohistochemistry (Formalin/PFA-fixed paraffin-embedded sections)

Immunohistochemical staining (Formalin-fixed paraffin-embedded sections) of human lung with SPN polyclonal antibody (Cat # PAB30289) shows strong membranous positivity in a subset of macrophages and pneumocytes.

Specification

Product Description	Rabbit polyclonal antibody raised against partial recombinant human SPN.
Immunogen	Recombinant protein corresponding to amino acids 315-394 of human SPN.
Sequence	VTVTVGSGGDKGSGFPDGE GSSRRPTLTTF GRRKSRQGS LAMEELKSGSGPS LKGEE EPLV ASE DGA VDAPAPDEPEG
Host	Rabbit
Reactivity	Human
Form	Liquid
Purification	Antigen affinity purification
Isotype	IgG
Recommend Usage	Immunohistochemistry (Formalin/PFA-fixed paraffin-embedded sections) (1:50 - 1:200) The optimal working dilution should be determined by the end user.
Storage Buffer	In PBS, pH 7.2 (40% glycerol, 0.02% sodium azide).
Storage Instruction	Store at 4°C for short term storage. For long term storage store at -20°C. Aliquot to avoid repeated freezing and thawing.
Note	This product contains sodium azide: a POISONOUS AND HAZARDOUS SUBSTANCE which should be handled by trained staff only.

Applications

- Immunohistochemistry (Formalin/PFA-fixed paraffin-embedded sections)

Immunohistochemical staining (Formalin-fixed paraffin-embedded sections) of human lymphoma with SPN polyclonal antibody (Cat # PAB30289) shows strong cytoplasmic positivity in a subset of tumor cells.

- Immunohistochemistry (Formalin/PFA-fixed paraffin-embedded sections)

Immunohistochemical staining (Formalin-fixed paraffin-embedded sections) of human lymph node with SPN polyclonal antibody (Cat # PAB30289) shows strong cytoplasmic positivity in non-germinal center cells.

- Immunohistochemistry (Formalin/PFA-fixed paraffin-embedded sections)

Immunohistochemical staining (Formalin-fixed paraffin-embedded sections) of human lung with SPN polyclonal antibody (Cat # PAB30289) shows strong membranous positivity in a subset of macrophages and pneumocytes.

Gene Info — SPN

Entrez GeneID	6693
Protein Accession#	P16150
Gene Name	SPN
Gene Alias	CD43, GPL115, LSN
Gene Description	sialophorin
Omim ID	182160
Gene Ontology	Hyperlink
Gene Summary	Sialophorin (leukosialin) is a major sialoglycoprotein on the surface of human T lymphocytes, monocytes, granulocytes, and some B lymphocytes, which appears to be important for immune function and may be part of a physiologic ligand-receptor complex involved in T-cell activation.[supplied by OMIM]
Other Designations	leukosialin sialophorin (gpL115, leukosialin, CD43) sialophorin (leukosialin, CD43)

Pathway

- [Cell adhesion molecules \(CAMs\)](#)

Disease

- [Kidney Failure](#)