

ATRX polyclonal antibody

Catalog # PAB30224

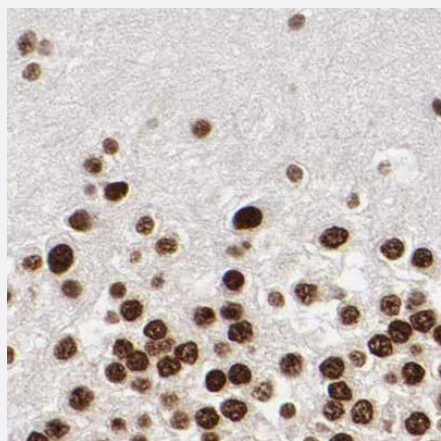
Size 100 uL

Applications



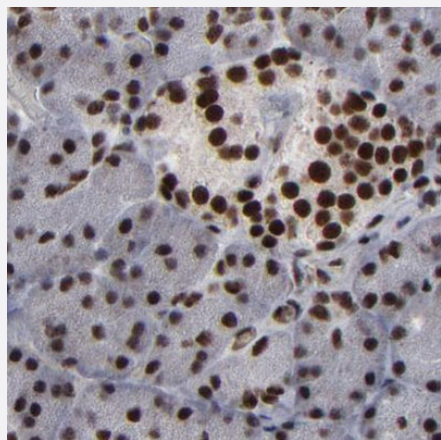
Western Blot (Cell lysate)

Western blot analysis of A-549 cell line with ATRX polyclonal antibody (Cat # PAB30224).



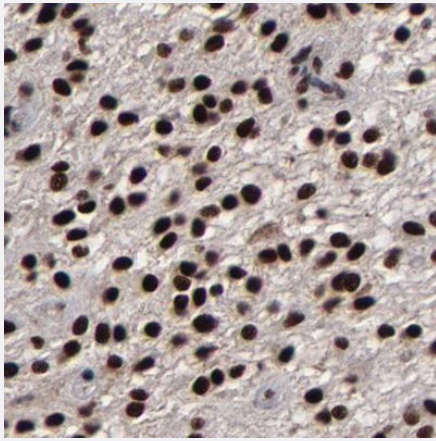
Immunohistochemistry (Formalin/PFA-fixed paraffin-embedded sections)

Immunohistochemical staining (Formalin-fixed paraffin-embedded sections) of human hippocampus shows nuclear immunoreactivity in the neurons with ATRX polyclonal antibody (Cat # PAB30224).



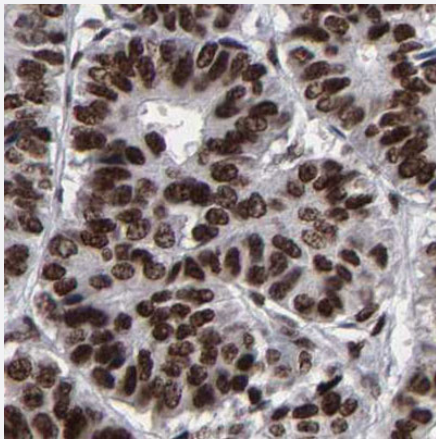
Immunohistochemistry (Formalin/PFA-fixed paraffin-embedded sections)

Immunohistochemical staining (Formalin-fixed paraffin-embedded sections) of human pancreas shows strong nuclear positivity in exocrine glandular cells and islets of Langerhans with ATRX polyclonal antibody (Cat # PAB30224).



Immunohistochemistry (Formalin/PFA-fixed paraffin-embedded sections)

Immunohistochemical staining (Formalin-fixed paraffin-embedded sections) of human glioma shows strong nuclear immunoreactivity in tumor cells with ATRX polyclonal antibody (Cat # PAB30224).



Immunohistochemistry (Formalin/PFA-fixed paraffin-embedded sections)

Immunohistochemical staining (Formalin-fixed paraffin-embedded sections) of human pancreatic cancer shows strong nuclear positivity in tumor cells with ATRX polyclonal antibody (Cat # PAB30224).

Specification

Product Description	Rabbit polyclonal antibody raised against partial recombinant human ATRX.
Immunogen	Recombinant protein corresponding to amino acids 2273 - 2413 of human ATRX.
Sequence	AAWAEYEAEEKGLTMRFNIPGTNLPPVSFNSQTPYIPFNLGALSAMSNQQLEDLINQGREKVVEA TNSVTAVRIQPLEDIISAVWKENMNLSEAQVQALALSRQASQELDVKRREAIYNDVLTKQQMLISC VQRILMNRR
Host	Rabbit
Reactivity	Human
Form	Liquid
Purification	Antigen affinity purification
Isotype	IgG

Recommend Usage	Immunohistochemistry (Formalin/PFA-fixed paraffin-embedded sections) (1:500 - 1:1000) Western Blot (1:250 - 1:500) The optimal working dilution should be determined by the end user.
Storage Buffer	In PBS, pH 7.2 (40% glycerol, 0.02% sodium azide).
Storage Instruction	Store at 4°C. For long term storage store at -20°C. Aliquot to avoid repeated freezing and thawing.
Note	This product contains sodium azide: a POISONOUS AND HAZARDOUS SUBSTANCE which should be handled by trained staff only.

Applications

- Western Blot (Cell lysate)

Western blot analysis of A-549 cell line with ATRX polyclonal antibody (Cat # PAB30224).

- Immunohistochemistry (Formalin/PFA-fixed paraffin-embedded sections)

Immunohistochemical staining (Formalin-fixed paraffin-embedded sections) of human hippocampus shows nuclear immunoreactivity in the neurons with ATRX polyclonal antibody (Cat # PAB30224).

- Immunohistochemistry (Formalin/PFA-fixed paraffin-embedded sections)

Immunohistochemical staining (Formalin-fixed paraffin-embedded sections) of human pancreas shows strong nuclear positivity in exocrine glandular cells and islets of Langerhans with ATRX polyclonal antibody (Cat # PAB30224).

- Immunohistochemistry (Formalin/PFA-fixed paraffin-embedded sections)

Immunohistochemical staining (Formalin-fixed paraffin-embedded sections) of human glioma shows strong nuclear immunoreactivity in tumor cells with ATRX polyclonal antibody (Cat # PAB30224).

- Immunohistochemistry (Formalin/PFA-fixed paraffin-embedded sections)

Immunohistochemical staining (Formalin-fixed paraffin-embedded sections) of human pancreatic cancer shows strong nuclear positivity in tumor cells with ATRX polyclonal antibody (Cat # PAB30224).

Gene Info — ATRX

Entrez GeneID	546
Protein Accession#	P46100
Gene Name	ATRX
Gene Alias	ATR2, MGC2094, MRXHF1, RAD54, RAD54L, SFM1, SHS, XH2, XNP, ZNF-HX

Gene Description	alpha thalassemia/mental retardation syndrome X-linked (RAD54 homolog, S. cerevisiae)
Omim ID	300032 300448 301040 309580
Gene Ontology	Hyperlink
Gene Summary	The protein encoded by this gene contains an ATPase/helicase domain, and thus it belongs to the SWI/SNF family of chromatin remodeling proteins. The mutations of this gene are associated with an X-linked mental retardation (XLMR) syndrome most often accompanied by alpha-thalassemia (ATRX) syndrome. These mutations have been shown to cause diverse changes in the pattern of DNA methylation, which may provide a link between chromatin remodeling, DNA methylation, and gene expression in developmental processes. This protein is found to undergo cell cycle-dependent phosphorylation, which regulates its nuclear matrix and chromatin association, and suggests its involvement in the gene regulation at interphase and chromosomal segregation in mitosis. Multiple alternatively spliced transcript variants encoding distinct isoforms have been reported. [provided by RefSeq]
Other Designations	DNA dependent ATPase and helicase OTTHUMP00000024265 OTTHUMP00000062079 X-linked nuclear protein Zinc finger helicase helicase 2, X-linked transcriptional regulator ATRX

Disease

- [Breast cancer](#)
- [Breast Neoplasms](#)
- [Genetic Predisposition to Disease](#)