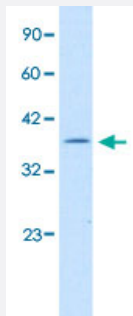


ILF2 polyclonal antibody

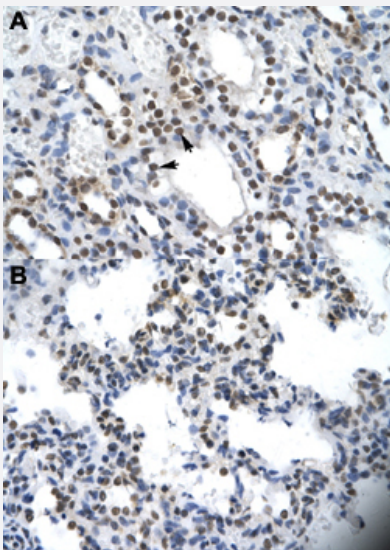
Catalog # PAB30157 Size 100 uL

Applications



Western Blot (Cell lysate)

Western Blot analysis of Jurkat cell lysate with ILF2 polyclonal antibody (Cat # PAB30157) at 1.25 ug/mL working concentration.



Immunohistochemistry (Formalin/PFA-fixed paraffin-embedded sections)

Immunohistochemical staining (Formalin-fixed paraffin-embedded sections) of human kidney (A) and human heart (B) with ILF2 polyclonal antibody (Cat # PAB30157) at 4-8 ug/mL working concentration.

Specification

| | |
|----------------------------|--|
| Product Description | Rabbit polyclonal antibody raised against synthetic peptide of human ILF2. |
| Immunogen | A synthetic peptide corresponding to C-terminus of human ILF2. |
| Sequence | HGGFRKILGQEGDASYLASEISTWDGVVTPSEKAYEKPPEKKEGEEEEEE |
| Host | Rabbit |

| | |
|----------------------|--|
| Theoretical MW (kDa) | 43 |
| Reactivity | Human |
| Form | Liquid |
| Purification | Protein A purification |
| Recommend Usage | Immunohistochemistry (Formalin/PFA-fixed paraffin-embedded sections) (4-8 ug/mL) Western Blot The optimal working dilution should be determined by the end user. |
| Storage Buffer | In PBS (2% sucrose, 0.09% sodium azide). |
| Storage Instruction | Store at 4°C. For long term storage store at -20°C. Aliquot to avoid repeated freezing and thawing. |
| Note | This product contains sodium azide: a POISONOUS AND HAZARDOUS SUBSTANCE which should be handled by trained staff only. |

Applications

- Western Blot (Cell lysate)

Western Blot analysis of Jurkat cell lysate with ILF2 polyclonal antibody (Cat # PAB30157) at 1.25 ug/mL working concentration.

- Immunohistochemistry (Formalin/PFA-fixed paraffin-embedded sections)

Immunohistochemical staining (Formalin-fixed paraffin-embedded sections) of human kidney (A) and human heart (B) with ILF2 polyclonal antibody (Cat # PAB30157) at 4-8 ug/mL working concentration.

Gene Info — ILF2

| | |
|---------------------|--|
| Entrez GeneID | 3608 |
| GeneBank Accession# | NM_004515 |
| Protein Accession# | NP_004506:Q12905 |
| Gene Name | ILF2 |
| Gene Alias | MGC8391, NF45, PRO3063 |
| Gene Description | interleukin enhancer binding factor 2, 45kDa |
| Omim ID | 603181 |
| Gene Ontology | Hyperlink |

Gene Summary

Nuclear factor of activated T-cells (NFAT) is a transcription factor required for T-cell expression of the interleukin 2 gene. NFAT binds to a sequence in the interleukin 2 gene enhancer known as the antigen receptor response element 2. In addition, NFAT can bind RNA and is an essential component for encapsidation and protein priming of hepatitis B viral polymerase. NFAT is a heterodimer of 45 kDa and 90 kDa proteins, the smaller of which is the product of this gene. The encoded protein binds strongly to the 90 kDa protein and stimulates its ability to enhance gene expression. [provided by RefSeq]

Other Designations

interleukin enhancer binding factor 2|nuclear factor of activated T-cells, 45-kDa