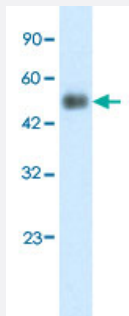


GCM1 polyclonal antibody

Catalog # PAB30098

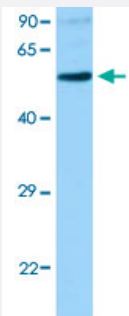
Size 100 uL

Applications



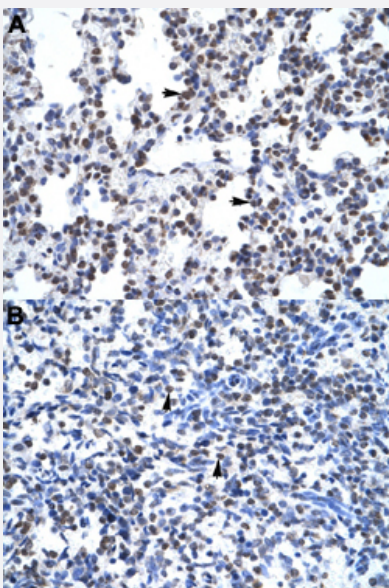
Western Blot (Tissue lysate)

Western Blot analysis of human placenta tissue lysate with GCM1 polyclonal antibody (Cat # PAB30098) at 2.5 ug/mL working concentration.



Western Blot (Cell lysate)

Western Blot analysis of 293T cell lysate with GCM1 polyclonal antibody (Cat # PAB30098) at 1 ug/mL working concentration.



Immunohistochemistry (Formalin/PFA-fixed paraffin-embedded sections)

Immunohistochemical staining (Formalin-fixed paraffin-embedded sections) of human lung (A) and human spleen (B) with GCM1 polyclonal antibody (Cat # PAB30098) at 4-8 ug/mL working concentration.

Specification

Product Description	Rabbit polyclonal antibody raised against synthetic peptide of human GCM1.
Immunogen	A synthetic peptide corresponding to N-terminus of human GCM1.
Sequence	MEPDDFDSEDKEILSWDINDVKLPQNVKKTDWTFQEWPD SYAKHIYSSEDK
Host	Rabbit
Theoretical MW (kDa)	49
Reactivity	Human
Form	Liquid
Purification	Affinity purification
Recommend Usage	Immunohistochemistry (Formalin/PFA-fixed paraffin-embedded sections) (4-8 ug/mL) Western Blot The optimal working dilution should be determined by the end user.
Storage Buffer	In PBS (2% sucrose, 0.09% sodium azide).
Storage Instruction	Store at 4°C. For long term storage store at -20°C. Aliquot to avoid repeated freezing and thawing.
Note	This product contains sodium azide: a POISONOUS AND HAZARDOUS SUBSTANCE which should be handled by trained staff only.

Applications

- Western Blot (Tissue lysate)

Western Blot analysis of human placenta tissue lysate with GCM1 polyclonal antibody (Cat # PAB30098) at 2.5 ug/mL working concentration.

- Western Blot (Cell lysate)

Western Blot analysis of 293T cell lysate with GCM1 polyclonal antibody (Cat # PAB30098) at 1 ug/mL working concentration.

- Immunohistochemistry (Formalin/PFA-fixed paraffin-embedded sections)

Immunohistochemical staining (Formalin-fixed paraffin-embedded sections) of human lung (A) and human spleen (B) with GCM1 polyclonal antibody (Cat # PAB30098) at 4-8 ug/mL working concentration.

Gene Info — GCM1

Entrez GeneID	8521
GeneBank Accession#	NM_003643
Protein Accession#	NP_003634;Q9NP62
Gene Name	GCM1
Gene Alias	GCMA, hGCMA
Gene Description	glial cells missing homolog 1 (Drosophila)
Omim ID	603715
Gene Ontology	Hyperlink
Gene Summary	<p>This gene encodes a DNA-binding protein with a gcm-motif (glial cell missing motif). The encoded protein is a homolog of the Drosophila glial cells missing gene (gcm). This protein binds to the GCM-motif (A/G)CCCGCAT, a novel sequence among known targets of DNA-binding proteins. The N-terminal DNA-binding domain confers the unique DNA-binding activity of this protein. [provided by RefSeq]</p>
Other Designations	GCM motif protein 1 OTTHUMP00000016631 chorion-specific transcription factor GCMA glial cells missing homolog a

Disease

- [Alzheimer disease](#)
- [Cerebral Amyloid Angiopathy](#)
- [Disease Susceptibility](#)
- [Genetic Predisposition to Disease](#)
- [Glomerulonephritis](#)
- [Neuroblastoma](#)