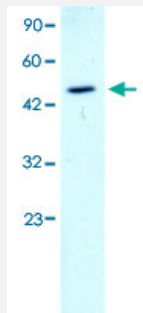


GATA2 polyclonal antibody

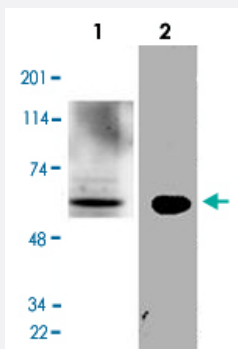
Catalog # PAB30096 Size 100 uL

Applications



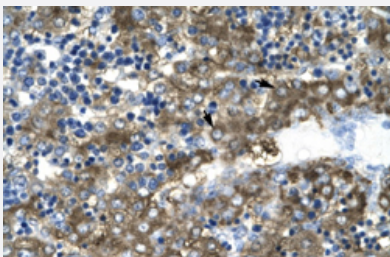
Western Blot (Cell lysate)

Western Blot analysis of K562 cell lysate with GATA2 polyclonal antibody (Cat # PAB30096) at 1-2 ug/mL working concentration.



Western Blot

Western Blot analysis of mouse liver tissue lysate and N2a cell lysate with GATA2 polyclonal antibody (Cat # PAB30096) at 1:500 dilution.



Immunohistochemistry (Formalin/PFA-fixed paraffin-embedded sections)

Immunohistochemical staining (Formalin-fixed paraffin-embedded sections) of human liver with GATA2 polyclonal antibody (Cat # PAB30096) at 4-8 ug/mL working concentration.

Specification

Product Description

Rabbit polyclonal antibody raised against synthetic peptide of human GATA2.

Immunogen	A synthetic peptide corresponding to N-terminus of human GATA2.
Sequence	PYYANPAHARARVSYSPA HARLTGGQMCRPHLLHSPGLPWLDGGKAALSA
Host	Rabbit
Theoretical MW (kDa)	50
Reactivity	Human, Mouse
Form	Liquid
Purification	Protein A purification
Recommend Usage	Immunohistochemistry (Formalin/PFA-fixed paraffin-embedded sections) (4-8 ug/mL) Western Blot The optimal working dilution should be determined by the end user.
Storage Buffer	In PBS (2% sucrose, 0.09% sodium azide).
Storage Instruction	Store at 4°C. For long term storage store at -20°C. Aliquot to avoid repeated freezing and thawing.
Note	This product contains sodium azide: a POISONOUS AND HAZARDOUS SUBSTANCE which should be handled by trained staff only.

Applications

- Western Blot (Cell lysate)

Western Blot analysis of K562 cell lysate with GATA2 polyclonal antibody (Cat # PAB30096) at 1-2 ug/mL working concentration.

- Western Blot

Western Blot analysis of mouse liver tissue lysate and N2a cell lysate with GATA2 polyclonal antibody (Cat # PAB30096) at 1:500 dilution.

- Immunohistochemistry (Formalin/PFA-fixed paraffin-embedded sections)

Immunohistochemical staining (Formalin-fixed paraffin-embedded sections) of human liver with GATA2 polyclonal antibody (Cat # PAB30096) at 4-8 ug/mL working concentration.

Gene Info — GATA2

Entrez GeneID [2624](#)

GeneBank Accession# [NM_032638](#)

Protein Accession#	NP_116027;P23769
Gene Name	GATA2
Gene Alias	MGC2306, NFE1B
Gene Description	GATA binding protein 2
Omim ID	137295
Gene Ontology	Hyperlink
Gene Summary	<p>This gene encodes a member of the GATA family of zinc-finger transcription factors that are named for the consensus nucleotide sequence they bind in the promoter regions of target genes. The encoded protein plays an essential role in regulating transcription of genes involved in the development and proliferation of hematopoietic and endocrine cell lineages. Alternative splicing results in multiple transcript variants</p>
Other Designations	GATA-binding protein 2

Disease

- [Blast Crisis](#)
- [Cardiovascular Diseases](#)
- [Coronary Artery Disease](#)
- [Diabetes Mellitus](#)
- [Disease Progression](#)
- [Edema](#)
- [Genetic Predisposition to Disease](#)
- [Hematologic Neoplasms](#)
- [Kidney Failure](#)
- [Leukemia](#)
- [Nasal Polyps](#)
- [Parkinson Disease](#)