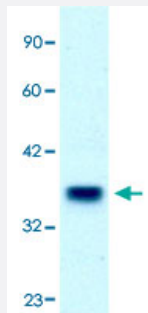


# FOXF1 polyclonal antibody

Catalog # PAB30083

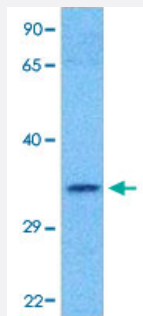
Size 100 uL

## Applications



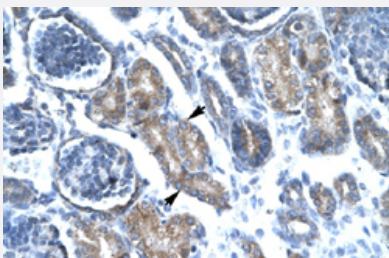
### Western Blot (Tissue lysate)

Western Blot analysis of human placenta tissue lysate with FOXF1 polyclonal antibody (Cat # PAB30083) at 2.5 ug/mL working concentration.



### Western Blot (Cell lysate)

Western Blot analysis of HeLa cell lysate with FOXF1 polyclonal antibody (Cat # PAB30083) at 1 ug/mL working concentration.



### Immunohistochemistry (Formalin/PFA-fixed paraffin-embedded sections)

Immunohistochemical staining (Formalin-fixed paraffin-embedded sections) of human kidney with FOXF1 polyclonal antibody (Cat # PAB30083) at 4-8 ug/mL working concentration.

## Specification

### Product Description

Rabbit polyclonal antibody raised against synthetic peptide of human FOXF1.

### Immunogen

A synthetic peptide corresponding to C-terminus of human FOXF1.

Sequence	PCNPAANPLSGSLSTHSLEQPYLHQNSHNAPAEHQGIPRYHSQSPSMCDR
Host	Rabbit
Theoretical MW (kDa)	38
Reactivity	Human
Form	Liquid
Purification	Protein A purification
Recommend Usage	Immunohistochemistry (Formalin/PFA-fixed paraffin-embedded sections) (4-8 ug/mL) Western Blot The optimal working dilution should be determined by the end user.
Storage Buffer	In PBS (2% sucrose, 0.09% sodium azide).
Storage Instruction	Store at 4°C. For long term storage store at -20°C. Aliquot to avoid repeated freezing and thawing.
Note	This product contains sodium azide: a POISONOUS AND HAZARDOUS SUBSTANCE which should be handled by trained staff only.

## Applications

- Western Blot (Tissue lysate)

Western Blot analysis of human placenta tissue lysate with FOXF1 polyclonal antibody (Cat # PAB30083) at 2.5 ug/mL working concentration.

- Western Blot (Cell lysate)

Western Blot analysis of HeLa cell lysate with FOXF1 polyclonal antibody (Cat # PAB30083) at 1 ug/mL working concentration.

- Immunohistochemistry (Formalin/PFA-fixed paraffin-embedded sections)

Immunohistochemical staining (Formalin-fixed paraffin-embedded sections) of human kidney with FOXF1 polyclonal antibody (Cat # PAB30083) at 4-8 ug/mL working concentration.

## Gene Info — FOXF1

Entrez GeneID	<a href="#">2294</a>
GeneBank Accession#	<a href="#">NM_001451</a>
Protein Accession#	<a href="#">NP_001442:Q12946</a>

Gene Name	FOXF1
Gene Alias	FKHL5, FREAC1, MGC105125
Gene Description	forkhead box F1
Omim ID	<a href="#">601089</a>
Gene Ontology	<a href="#">Hyperlink</a>
Gene Summary	This gene belongs to the forkhead family of transcription factors which is characterized by a distinct forkhead domain. The specific function of this gene has not yet been determined; however, it may play a role in the regulation of pulmonary genes as well as embryonic development. [provided by RefSeq]
Other Designations	Forkhead, drosophila, homolog-like 5 forkhead-like 5 forkhead-related activator 1

## Publication Reference

- [Forkhead box F1 functions as a novel prognostic biomarker and induces caspase-dependent apoptosis in bladder cancer.](#)

Yining Hao, Wei He, Haofei Wang, Wenbin Rui, Fukang Sun, Yu Zhu, Danfeng Xu, Chenghe Wang

Oncology Reports 2023 Aug; 50(3):173.

Application: IHC, Human, EJ, T24 cells

## Disease

- [Cerebral Hemorrhage](#)
- [Genetic Predisposition to Disease](#)
- [Hypertension](#)
- [Intracranial Hemorrhages](#)
- [Lymphedema](#)
- [Stroke](#)
- [Subarachnoid Hemorrhage](#)