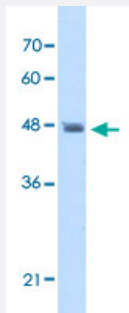


ENO3 polyclonal antibody

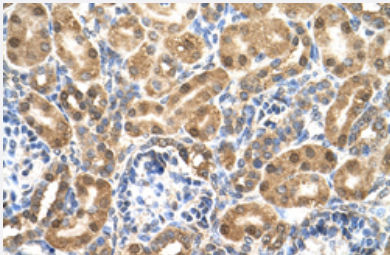
Catalog # PAB30051 Size 100 uL

Applications



Western Blot (Cell lysate)

Western Blot analysis of HepG2 cell lysate with ENO3 polyclonal antibody (Cat # PAB30051) at 5 ug/mL working concentration.



Immunohistochemistry (Formalin/PFA-fixed paraffin-embedded sections)

Immunohistochemical staining (Formalin-fixed paraffin-embedded sections) of human kidney with ENO3 polyclonal antibody (Cat # PAB30051) at 4-8 ug/mL working concentration.

Specification

Product Description	Rabbit polyclonal antibody raised against synthetic peptide of human ENO3.
Immunogen	A synthetic peptide corresponding to N-terminus of human ENO3.
Sequence	MAMQKIFAREILDSRGNPTVEVDLHTAKGRFRAAVPSGASTGMYEALRL
Host	Rabbit
Theoretical MW (kDa)	47
Reactivity	Human
Form	Liquid

Purification	Protein A purification
Recommend Usage	Immunohistochemistry (Formalin/PFA-fixed paraffin-embedded sections) (4-8 ug/mL) Western Blot (5 ug/mL) The optimal working dilution should be determined by the end user.
Storage Buffer	In PBS (2% sucrose, 0.09% sodium azide).
Storage Instruction	Store at 4°C. For long term storage store at -20°C. Aliquot to avoid repeated freezing and thawing.
Note	This product contains sodium azide: a POISONOUS AND HAZARDOUS SUBSTANCE which should be handled by trained staff only.

Applications

- Western Blot (Cell lysate)

Western Blot analysis of HepG2 cell lysate with ENO3 polyclonal antibody (Cat # PAB30051) at 5 ug/mL working concentration.

- Immunohistochemistry (Formalin/PFA-fixed paraffin-embedded sections)

Immunohistochemical staining (Formalin-fixed paraffin-embedded sections) of human kidney with ENO3 polyclonal antibody (Cat # PAB30051) at 4-8 ug/mL working concentration.

Gene Info — ENO3

Entrez GeneID	2027
GeneBank Accession#	NM_001976
Protein Accession#	NP_001967;P13929
Gene Name	ENO3
Gene Alias	MSE
Gene Description	enolase 3 (beta, muscle)
Omim ID	131370
Gene Ontology	Hyperlink

Gene Summary

This gene encodes one of the three enolase isoenzymes found in mammals. This isoenzyme, a homodimer, is found in skeletal muscle cells in the adult. A switch from alpha enolase to beta enolase occurs in muscle tissue during development in rodents. Mutations in this gene can be associated with metabolic myopathies that may result from decreased stability of the enzyme. Two transcripts have been identified for this gene that differ only in their 5' UTR. [provided by RefSeq]

Other Designations

2-phospho-D-glycerate hydrolyase|ENO3, muscle enolase 3 beta|OTTHUMP00000125242|beta enolase|enolase 3|enolase-3, beta, muscle|muscle specific enolase|skeletal muscle enolase

Pathway

- [Biosynthesis of alkaloids derived from histidine and purine](#)
- [Biosynthesis of alkaloids derived from ornithine](#)
- [Biosynthesis of alkaloids derived from shikimate pathway](#)
- [Biosynthesis of alkaloids derived from terpenoid and polyketide](#)
- [Biosynthesis of phenylpropanoids](#)
- [Biosynthesis of plant hormones](#)
- [Biosynthesis of terpenoids and steroids](#)
- [Glycolysis / Gluconeogenesis](#)
- [Metabolic pathways](#)
- [RNA degradation](#)

Disease

- [Muscular Dystrophies](#)