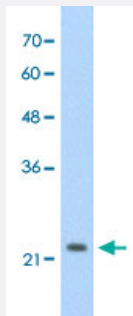


# DLX2 polyclonal antibody

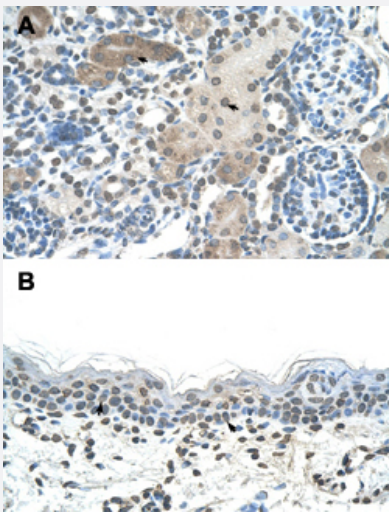
Catalog # PAB30035      Size 100 uL

## Applications



### Western Blot (Cell lysate)

Western Blot analysis of HepG2 cell lysate with DLX2 polyclonal antibody (Cat # PAB30035) at 2.5 ug/mL working concentration.



### Immunohistochemistry (Formalin/PFA-fixed paraffin-embedded sections)

Immunohistochemical staining (Formalin-fixed paraffin-embedded sections) of human kidney (A) and human skin (B) with DLX2 polyclonal antibody (Cat # PAB30035) at 4-8 ug/mL working concentration.

## Specification

Product Description	Rabbit polyclonal antibody raised against synthetic peptide of human DLX2.
Immunogen	A synthetic peptide corresponding to C-terminus of human DLX2.
Sequence	PASWDFGVPRMAGGGGPGSGGSGAGSSGSSPSSAASAFLGNYPWYHQTS
Host	Rabbit

Theoretical MW (kDa)	27
Reactivity	Human
Form	Liquid
Purification	Protein A purification
Recommend Usage	Immunohistochemistry (Formalin/PFA-fixed paraffin-embedded sections) (4-8 ug/mL) Western Blot (2.5 ug/mL) The optimal working dilution should be determined by the end user.
Storage Buffer	In PBS (2% sucrose, 0.09% sodium azide).
Storage Instruction	Store at 4°C. For long term storage store at -20°C. Aliquot to avoid repeated freezing and thawing.
Note	This product contains sodium azide: a POISONOUS AND HAZARDOUS SUBSTANCE which should be handled by trained staff only.

## Applications

- Western Blot (Cell lysate)

Western Blot analysis of HepG2 cell lysate with DLX2 polyclonal antibody (Cat # PAB30035) at 2.5 ug/mL working concentration.

- Immunohistochemistry (Formalin/PFA-fixed paraffin-embedded sections)

Immunohistochemical staining (Formalin-fixed paraffin-embedded sections) of human kidney (A) and human skin (B) with DLX2 polyclonal antibody (Cat # PAB30035) at 4-8 ug/mL working concentration.

## Gene Info — DLX2

Entrez GeneID	<a href="#">1746</a>
GeneBank Accession#	<a href="#">NM_004405</a>
Protein Accession#	<a href="#">AAA19663;Q07687</a>
Gene Name	DLX2
Gene Alias	TES-1, TES1
Gene Description	distal-less homeobox 2
Omim ID	<a href="#">126255</a>

## Gene Ontology

[Hyperlink](#)

## Gene Summary

Many vertebrate homeo box-containing genes have been identified on the basis of their sequence similarity with Drosophila developmental genes. Members of the Dlx gene family contain a homeo box that is related to that of Distal-less (Dll), a gene expressed in the head and limbs of the developing fruit fly. The Distal-less (Dlx) family of genes comprises at least 6 different members, DLX1-DLX6. The DLX proteins are postulated to play a role in forebrain and craniofacial development. This gene is located in a tail-to-tail configuration with another member of the gene family on the long arm of chromosome 2. [provided by RefSeq]

## Other Designations

distal-less homeo box 2

## Disease

- [Autistic Disorder](#)
- [Cleft Lip](#)
- [Cleft Palate](#)
- [Genetic Predisposition to Disease](#)
- [Mental Disorders](#)
- [Schizophrenia](#)