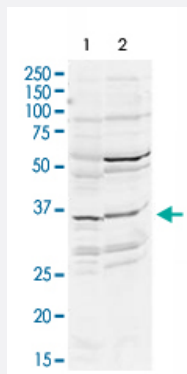


DLX2 polyclonal antibody

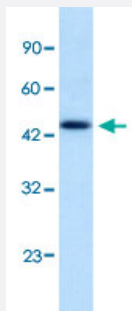
Catalog # PAB30034 Size 100 uL

Applications



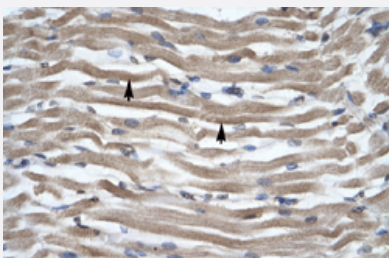
Western Blot (Tissue lysate)

Western Blot analysis of mouse WT brain (A) and rat brain (B) tissue lysates with DLX2 polyclonal antibody (Cat # PAB30034) at 2 ug/mL working concentration.



Western Blot (Cell lysate)

Western Blot analysis of Jurkat cell lysate with DLX2 polyclonal antibody (Cat # PAB30034) at 1.25 ug/mL working concentration.



Immunohistochemistry (Formalin/PFA-fixed paraffin-embedded sections)

Immunohistochemical staining (Formalin-fixed paraffin-embedded sections) of human muscle with DLX2 polyclonal antibody (Cat # PAB30034) at 4-8 ug/mL working concentration.

Specification

Product Description

Rabbit polyclonal antibody raised against synthetic peptide of human DLX2.

Immunogen	A synthetic peptide corresponding to N-terminus of human DLX2.
Sequence	MTGVFDSLVA DMHSTQIAASSTYHQHQPPSGGGAGPGGNSSSSSSSLHKP
Host	Rabbit
Theoretical MW (kDa)	34
Reactivity	Human, Mouse, Rat
Form	Liquid
Purification	Protein A purification
Recommend Usage	Immunohistochemistry (Formalin/PFA-fixed paraffin-embedded sections) (4-8 ug/mL) Western Blot The optimal working dilution should be determined by the end user.
Storage Buffer	In PBS (2% sucrose, 0.09% sodium azide).
Storage Instruction	Store at 4°C. For long term storage store at -20°C. Aliquot to avoid repeated freezing and thawing.
Note	This product contains sodium azide: a POISONOUS AND HAZARDOUS SUBSTANCE which should be handled by trained staff only.

Applications

- Western Blot (Tissue lysate)

Western Blot analysis of mouse WT brain (A) and rat brain (B) tissue lysates with DLX2 polyclonal antibody (Cat # PAB30034) at 2 ug/mL working concentration.

- Western Blot (Cell lysate)

Western Blot analysis of Jurkat cell lysate with DLX2 polyclonal antibody (Cat # PAB30034) at 1.25 ug/mL working concentration.

- Immunohistochemistry (Formalin/PFA-fixed paraffin-embedded sections)

Immunohistochemical staining (Formalin-fixed paraffin-embedded sections) of human muscle with DLX2 polyclonal antibody (Cat # PAB30034) at 4-8 ug/mL working concentration.

Gene Info — DLX2

Entrez GeneID [1746](#)

GeneBank Accession# [NM_004405](#)

Protein Accession#	NP_004396:Q07687
Gene Name	DLX2
Gene Alias	TES-1, TES1
Gene Description	distal-less homeobox 2
Omim ID	126255
Gene Ontology	Hyperlink
Gene Summary	<p>Many vertebrate homeo box-containing genes have been identified on the basis of their sequence similarity with Drosophila developmental genes. Members of the Dlx gene family contain a homeo box that is related to that of Distal-less (Dll), a gene expressed in the head and limbs of the developing fruit fly. The Distal-less (Dlx) family of genes comprises at least 6 different members, DLX1-DLX6. The DLX proteins are postulated to play a role in forebrain and craniofacial development. This gene is located in a tail-to-tail configuration with another member of the gene family on the long arm of chromosome 2. [provided by RefSeq]</p>
Other Designations	distal-less homeo box 2

Disease

- [Autistic Disorder](#)
- [Cleft Lip](#)
- [Cleft Palate](#)
- [Genetic Predisposition to Disease](#)
- [Mental Disorders](#)
- [Schizophrenia](#)