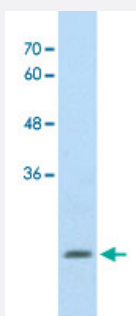


ALDH4A1 polyclonal antibody

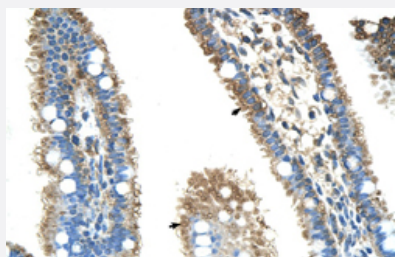
Catalog # PAB29957 Size 100 uL

Applications



Western Blot (Cell lysate)

Western Blot analysis of HepG2 cell lysate with ALDH4A1 polyclonal antibody (Cat # PAB29957) at 2.5 ug/mL working concentration.



Immunohistochemistry (Formalin/PFA-fixed paraffin-embedded sections)

Immunohistochemical staining (Formalin-fixed paraffin-embedded sections) of human intestine with ALDH4A1 polyclonal antibody (Cat # PAB29957) at 4-8 ug/mL working concentration.

Specification

Product Description	Rabbit polyclonal antibody raised against synthetic peptide of human ALDH4A1.
Immunogen	A synthetic peptide corresponding to N-terminus of human ALDH4A1.
Sequence	QGKTVIQAEIDAAELIDFFRFNAKYAVELEGQQPISVPPSTNSTVYRGL
Host	Rabbit
Theoretical MW (kDa)	24
Reactivity	Human
Form	Liquid

Purification	Protein A purification
Recommend Usage	Immunohistochemistry (Formalin/PFA-fixed paraffin-embedded sections) (4-8 ug/mL) Western Blot (2.5 ug/mL) The optimal working dilution should be determined by the end user.
Storage Buffer	In PBS (2% sucrose, 0.09% sodium azide).
Storage Instruction	Store at 4°C. For long term storage store at -20°C. Aliquot to avoid repeated freezing and thawing.
Note	This product contains sodium azide: a POISONOUS AND HAZARDOUS SUBSTANCE which should be handled by trained staff only.

Applications

- Western Blot (Cell lysate)

Western Blot analysis of HepG2 cell lysate with ALDH4A1 polyclonal antibody (Cat # PAB29957) at 2.5 ug/mL working concentration.

- Immunohistochemistry (Formalin/PFA-fixed paraffin-embedded sections)

Immunohistochemical staining (Formalin-fixed paraffin-embedded sections) of human intestine with ALDH4A1 polyclonal antibody (Cat # PAB29957) at 4-8 ug/mL working concentration.

Gene Info — ALDH4A1

Entrez GeneID	8659
GeneBank Accession#	NM_001161504
Protein Accession#	Q5TF55
Gene Name	ALDH4A1
Gene Alias	ALDH4, P5CD, P5CDh, P5CDhL, P5CDhS
Gene Description	aldehyde dehydrogenase 4 family, member A1
Omim ID	239510 606811
Gene Ontology	Hyperlink

Gene Summary

This protein belongs to the aldehyde dehydrogenase family of proteins. This enzyme is a mitochondrial matrix NAD-dependent dehydrogenase which catalyzes the second step of the proline degradation pathway, converting pyrroline-5-carboxylate to glutamate. Deficiency of this enzyme is associated with type II hyperprolinemia, an autosomal recessive disorder characterized by accumulation of delta-1-pyrroline-5-carboxylate (P5C) and proline. Alternatively spliced transcript variants encoding different isoforms have been identified for this gene. [provided by RefSeq]

Other Designations

OTTHUMP00000002544|OTTHUMP00000002545|P5C dehydrogenase|aldehyde dehydrogenase 4A1|mitochondrial delta-1-pyrroline 5-carboxylate dehydrogenase

Pathway

- [Alanine](#)
- [Arginine and proline metabolism](#)
- [Metabolic pathways](#)

Disease

- [Adenocarcinoma](#)
- [Esophageal Neoplasms](#)
- [Hearing Loss](#)