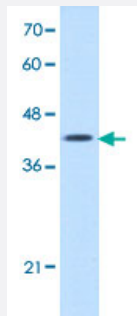


ACTR2 polyclonal antibody

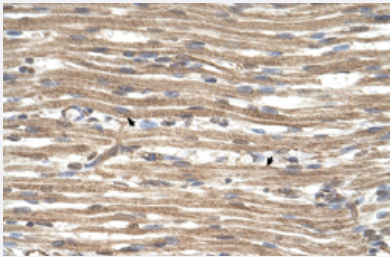
Catalog # PAB29950 Size 100 uL

Applications



Western Blot (Cell lysate)

Western Blot analysis of Jurkat cell lysate with ACTR2 polyclonal antibody (Cat # PAB29950) at 2.5 ug/mL working concentration.



Immunohistochemistry (Formalin/PFA-fixed paraffin-embedded sections)

Immunohistochemical staining (Formalin-fixed paraffin-embedded sections) of human muscle with ACTR2 polyclonal antibody (Cat # PAB29950) at 4-8 ug/mL working concentration.

Specification

Product Description	Rabbit polyclonal antibody raised against synthetic peptide of human ACTR2.
Immunogen	A synthetic peptide corresponding to N-terminus of human ACTR2.
Sequence	NGIVRNWDDMKHLWDYTFGPEKLNIDTRNCKILLTEPPMNPTKNREKIVE
Host	Rabbit
Theoretical MW (kDa)	45
Reactivity	Human
Form	Liquid

Purification	Protein A purification
Recommend Usage	Immunohistochemistry (Formalin/PFA-fixed paraffin-embedded sections) (4-8 ug/mL) Western Blot (2.5 ug/mL) The optimal working dilution should be determined by the end user.
Storage Buffer	In PBS (2% sucrose, 0.09% sodium azide).
Storage Instruction	Store at 4°C. For long term storage store at -20°C. Aliquot to avoid repeated freezing and thawing.
Note	This product contains sodium azide: a POISONOUS AND HAZARDOUS SUBSTANCE which should be handled by trained staff only.

Applications

- Western Blot (Cell lysate)

Western Blot analysis of Jurkat cell lysate with ACTR2 polyclonal antibody (Cat # PAB29950) at 2.5 ug/mL working concentration.

- Immunohistochemistry (Formalin/PFA-fixed paraffin-embedded sections)

Immunohistochemical staining (Formalin-fixed paraffin-embedded sections) of human muscle with ACTR2 polyclonal antibody (Cat # PAB29950) at 4-8 ug/mL working concentration.

Gene Info — ACTR2

Entrez GeneID	10097
GeneBank Accession#	NM_001005386
Protein Accession#	NP_001005386.P61160
Gene Name	ACTR2
Gene Alias	ARP2
Gene Description	ARP2 actin-related protein 2 homolog (yeast)
Omim ID	604221
Gene Ontology	Hyperlink

Gene Summary

The specific function of this gene has not yet been determined; however, the protein it encodes is known to be a major constituent of the ARP2/3 complex. This complex is located at the cell surface and is essential to cell shape and motility through lamellipodial actin assembly and protrusion. Two transcript variants encoding different isoforms have been found for this gene. [provided by RefSeq]

Other Designations

actin-related protein 2