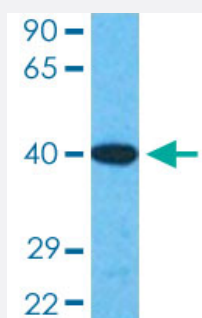


SOX18 polyclonal antibody

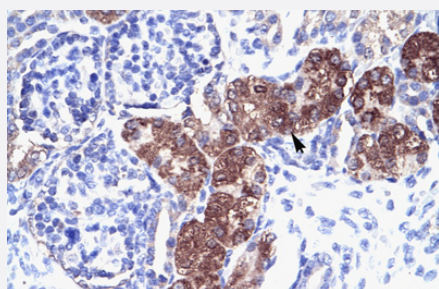
Catalog # PAB29866 Size 100 uL

Applications



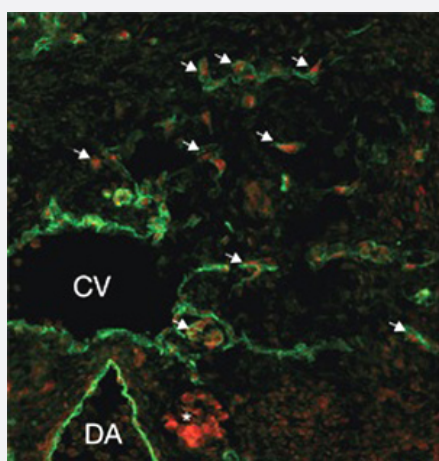
Western Blot (Tissue lysate)

Western blot analysis of human fetal liver tissue lysate with SOX18 polyclonal antibody (Cat # PAB29866) under 1.0 ug/mL working concentration.



Immunohistochemistry (Formalin/PFA-fixed paraffin-embedded sections)

Immunohistochemical staining (Formalin-fixed paraffin-embedded sections) of human kidney with SOX18 polyclonal antibody (Cat # PAB29866).



Immunofluorescence

Immunofluorescent staining of mouse embryo with SOX18 polyclonal antibody (Cat # PAB29866).

CV: cardinal vein. DA: dorsal aorta.

Specification

Product Description	Rabbit polyclonal antibody raised against partial synthetic protein of human SOX18.
Immunogen	A synthetic peptide corresponding to amino acids 271-320 of human SOX18.
Sequence	RTAPPAAPLAGLYYGTLGTPGPYPGPLSPPEAPPLESAEPLGPAADLWA
Host	Rabbit
Theoretical MW (kDa)	41
Reactivity	Human, Mouse
Form	Liquid
Purification	Affinity purification
Isotype	IgG
Recommend Usage	Immunofluorescence (1:500) Immunohistochemistry (4.0-8.0 ug/mL) Western Blot (1:1000) The optimal working dilution should be determined by the end user.
Storage Buffer	In PBS, pH 7.4 (2% sucrose, 0.09% sodium azide).
Storage Instruction	Store at 4°C for up to 1 week. For long term storage store at -20°C. Aliquot to avoid repeated freezing and thawing.
Note	This product contains sodium azide: a POISONOUS AND HAZARDOUS SUBSTANCE which should be handled by trained staff only.

Applications

- Western Blot (Tissue lysate)

Western blot analysis of human fetal liver tissue lysate with SOX18 polyclonal antibody (Cat # PAB29866) under 1.0 ug/mL working concentration.

- Immunohistochemistry (Formalin/PFA-fixed paraffin-embedded sections)

Immunohistochemical staining (Formalin-fixed paraffin-embedded sections) of human kidney with SOX18 polyclonal antibody (Cat # PAB29866).

- Immunofluorescence

Immunofluorescent staining of mouse embryo with SOX18 polyclonal antibody (Cat # PAB29866).
CV: cardinal vein. DA: dorsal aorta.

Gene Info — SOX18

Entrez GeneID [54345](#)**Protein Accession#** [P35713](#)**Gene Name** SOX18**Gene Alias** HLTS**Gene Description** SRY (sex determining region Y)-box 18**Omim ID** [601618 607823](#)**Gene Ontology** [Hyperlink](#)

Gene Summary This gene encodes a member of the SOX (SRY-related HMG-box) family of transcription factors involved in the regulation of embryonic development and in the determination of the cell fate. The encoded protein may act as a transcriptional regulator after forming a protein complex with other proteins. This protein plays a role in hair, blood vessel, and lymphatic vessel development. Mutations in this gene have been associated with recessive and dominant forms of hypotrichosis-lymphedema-telangiectasia. [provided by RefSeq]

Other Designations OTTHUMP00000031624|SRY-box 18|Transcription factor SOX-18

Disease

- [Breast cancer](#)
- [Lymphangiectasis](#)
- [Lymphedema](#)