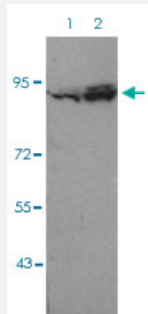


Rps6ka1 (phospho T348) polyclonal antibody

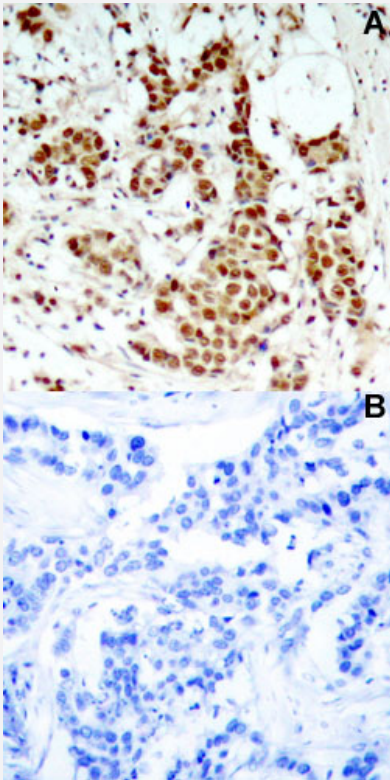
Catalog # PAB29605 Size 100 uL

Applications



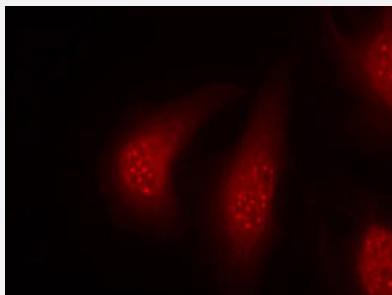
Western Blot (Cell lysate)

Western blot analysis of Lane 1: Hela cells, Lane 2: UV treated Hela cells with Rps6ka1 (phospho T348) polyclonal antibody (Cat# PAB29605) at 1:500-1:1000 dilution.



Immunohistochemistry (Formalin/PFA-fixed paraffin-embedded sections)

Immunohistochemical staining of human breast cancer tissue by Rps6ka1 (phospho T348) polyclonal antibody (Cat# PAB29605) without blocking peptide (A) or preincubated with blocking peptide (B) under 1:50-1:100 dilution.



Immunofluorescence

Immunofluorescent staining of methanol-fixed HeLa cells using Rps6ka1 (phospho T348) polyclonal antibody (Cat# PAB29605) at 1:100-1:200 dilution.

Specification

Product Description	Rabbit polyclonal antibody raised against synthetic phosphopeptide of mouse Rps6ka1.
Immunogen	A synthetic phosphopeptide (conjugated with KLH) corresponding to residues surrounding T348 of mouse Rps6ka1.
Host	Rabbit
Theoretical MW (kDa)	90
Reactivity	Human, Mouse, Rabbit
Specificity	Rps6ka1 (phospho T348) polyclonal antibody detects endogenous level of Rps6ka1 only when phosphorylated at threonine 348.
Form	Liquid
Purification	Affinity Chromatography
Recommend Usage	Immunofluorescence (1:100-1:200) Immunohistochemistry (1:50-1:100) Western Blot (1:500-1:1000) The optimal working dilution should be determined by the end user.
Storage Buffer	In PBS (without Mg^{2+} and Ca^{2+}), 150 mM NaCl, pH 7.4 (50% glycerol, 0.02% sodium azide)
Storage Instruction	Store at 4°C. For long term storage store at -20°C. Aliquot to avoid repeated freezing and thawing.
Note	This product contains sodium azide: a POISONOUS AND HAZARDOUS SUBSTANCE which should be handled by trained staff only.

Applications

- Western Blot (Cell lysate)

Western blot analysis of Lane 1: Hela cells, Lane 2: UV treated Hela cells with Rps6ka1 (phospho T348) polyclonal antibody (Cat# PAB29605) at 1:500-1:1000 dilution.

- Immunohistochemistry (Formalin/PFA-fixed paraffin-embedded sections)

Immunohistochemical staining of human breast cancer tissue by Rps6ka1 (phospho T348) polyclonal antibody (Cat# PAB29605) without blocking peptide (A) or preincubated with blocking peptide (B) under 1:50-1:100 dilution.

- Immunofluorescence

Immunofluorescent staining of methanol-fixed Hela cells using Rps6ka1 (phospho T348) polyclonal antibody (Cat# PAB29605) at 1:100-1:200 dilution.

Gene Info — Rps6ka1

Entrez GeneID	20111
---------------	-----------------------

Protein Accession#	Q15418
--------------------	------------------------

Gene Name	Rps6ka1
-----------	---------

Gene Alias	Rsk1, p90rsk, rsk
------------	-------------------

Gene Description	ribosomal protein S6 kinase polypeptide 1
------------------	---

Gene Ontology	Hyperlink
---------------	---------------------------

Gene Summary	90kD
--------------	------

Other Designations	OTTMUSP00000010160 ribosomal protein S6 kinase, 90kD, polypeptide 1; Ribosomal protein S6 kinase, 90kD, 1
--------------------	---