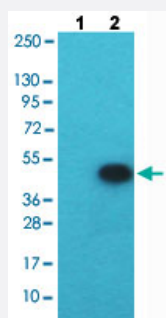


NUDC (phospho S326) polyclonal antibody

Catalog # PAB29584

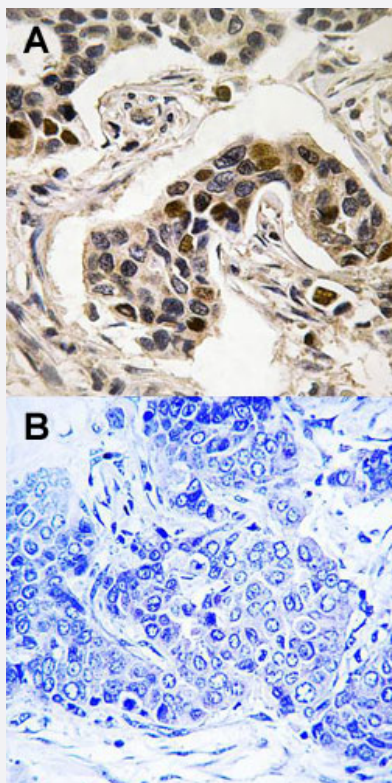
Size 100 uL

Applications



Western Blot (Cell lysate)

Western blot analysis of Lane 1: Synthesized peptide treated HepG2 cells, Lane 2: HepG2 cells with NUDC (phospho S326) polyclonal antibody (Cat # PAB29584) at 1:500-1:3000 dilution.



Immunohistochemistry (Formalin/PFA-fixed paraffin-embedded sections)

Immunohistochemical staining (Formalin-fixed paraffin-embedded sections) of human breast carcinoma tissue with NUDC (phospho S326) polyclonal antibody (Cat # PAB29584) under 1:50-1:100 dilution (A) or treated with synthesized peptide (B).

Specification

Product Description

Rabbit polyclonal antibody raised against synthetic phosphopeptide of human NUDC.

Immunogen	A synthetic phosphopeptide (conjugated with KLH) corresponding to residues surrounding S326 of human NUDC.
Host	Rabbit
Theoretical MW (kDa)	45
Reactivity	Human, Mouse, Rat
Specificity	NUDC (phospho S326) polyclonal antibody detects endogenous levels of human NUDC only when phosphorylated at serine 326.
Form	Liquid
Purification	Affinity chromatography
Isotype	IgG
Recommend Usage	Immunohistochemistry (Formalin/PFA-fixed paraffin-embedded sections) (1:50-1:100) Western Blot (1:500-1:3000) The optimal working dilution should be determined by the end user.
Storage Buffer	In PBS (without Mg^{2+} and Ca^{2+}), 150 mM NaCl, pH 7.4 (50% glycerol, 0.02% sodium azide)
Storage Instruction	Store at -20°C. Aliquot to avoid repeated freezing and thawing.
Note	This product contains sodium azide: a POISONOUS AND HAZARDOUS SUBSTANCE which should be handled by trained staff only.

Applications

- Western Blot (Cell lysate)

Western blot analysis of Lane 1: Synthesized peptide treated HepG2 cells, Lane 2: HepG2 cells with NUDC (phospho S326) polyclonal antibody (Cat # PAB29584) at 1:500-1:3000 dilution.

- Immunohistochemistry (Formalin/PFA-fixed paraffin-embedded sections)

Immunohistochemical staining (Formalin-fixed paraffin-embedded sections) of human breast carcinoma tissue with NUDC (phospho S326) polyclonal antibody (Cat # PAB29584) under 1:50-1:100 dilution (A) or treated with synthesized peptide (B).

Gene Info — NUDC

Entrez GeneID [10726](#)

Protein Accession# [Q9Y266](#)

Gene Name	NUDC
Gene Alias	HNUDC, MNUDC, NPD011
Gene Description	nuclear distribution gene C homolog (A. nidulans)
Omim ID	610325
Gene Ontology	Hyperlink
Gene Summary	NudC was first identified as a regulator of nuclear movement in the asexual reproductive cycle of the filamentous fungus <i>Aspergillus nidulans</i> . Human NUDC is a nuclear movement protein that associates with dynein (see DYNC1H1; MIM 600112) (Aumais et al., 2003 [PubMed 12679384]).[supplied by OMIM]
Other Designations	OTTHUMP00000004405 nuclear distribution gene C homolog