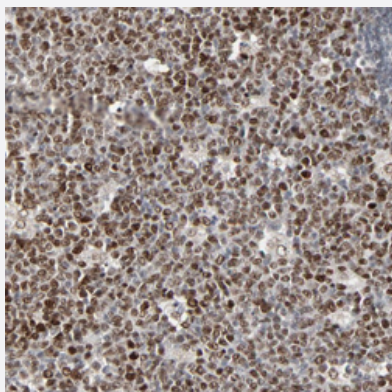


# CUX1 polyclonal antibody

Catalog # PAB29534      Size 100 uL

## Applications



### Immunohistochemistry (Formalin/PFA-fixed paraffin-embedded sections)

Immunohistochemical staining of human lymph node with CUX1 polyclonal antibody (Cat # PAB29534) shows strong nuclear positivity in reaction center cells at 1:20-1:50 dilution.

## Specification

Product Description	Rabbit polyclonal antibody raised against recombinant human CUX1.
Immunogen	Recombinant protein corresponding to human CUX1.
Sequence	LDPALKQAPLSQSDITLTPKLLSTSPMPTVSSYPPLAISLKKPSAAPEAGASALPNPPALKKEAQD APGLDPQGAADCAQGVLRQVKNEVGRSGAWKDHWWWS
Host	Rabbit
Reactivity	Human
Form	Liquid
Purification	Antigen affinity purification
Isotype	IgG
Recommend Usage	Immunohistochemistry (1:20-1:50) The optimal working dilution should be determined by the end user.
Storage Buffer	In PBS, pH 7.2 (40% glycerol, 0.02% sodium azide)

**Storage Instruction**

Store at 4°C. For long term storage store at -20°C.  
Aliquot to avoid repeated freezing and thawing.

**Note**

This product contains sodium azide: a POISONOUS AND HAZARDOUS SUBSTANCE which should be handled by trained staff only.

## Applications

- Immunohistochemistry (Formalin/PFA-fixed paraffin-embedded sections)

Immunohistochemical staining of human lymph node with CUX1 polyclonal antibody (Cat # PAB29534) shows strong nuclear positivity in reaction center cells at 1:20-1:50 dilution.

## Gene Info — CUX1

**Entrez GeneID**[1523](#)**Gene Name**

CUX1

**Gene Alias**

CASP, CDP, CDP/Cut, CDP1, COY1, CUTL1, CUX, Clox, Cux/CDP, GOLIM6, Nbla10317, p100, p110, p200, p75

**Gene Description**

cut-like homeobox 1

**Omim ID**[116896](#)**Gene Ontology**[Hyperlink](#)**Gene Summary**

The protein encoded by this gene is a member of the homeodomain family of DNA binding proteins. It may regulate gene expression, morphogenesis, and differentiation and it may also play a role in the cell cycle progression. Several alternatively spliced transcript variants of this gene have been described, but the full-length nature of some of these variants has not been determined. [provided by RefSeq]

**Other Designations**

cut homeobox|cut homolog|cut-like 1, CCAAT displacement protein|golgi integral membrane protein 6|putative protein product of Nbla10317

## Disease

- [Tobacco Use Disorder](#)