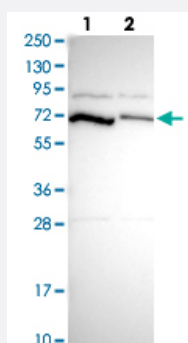


# PCK2 polyclonal antibody

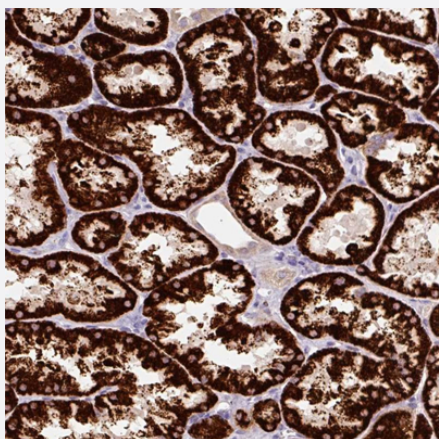
Catalog # PAB29436      Size 100 uL

## Applications



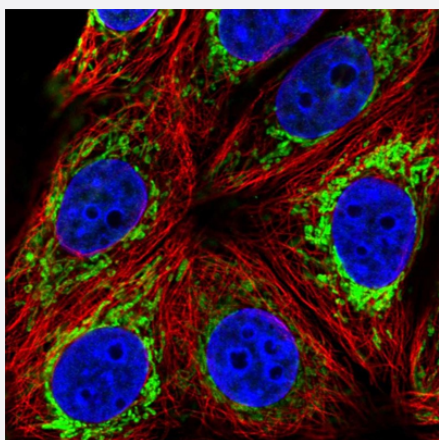
### Western Blot (Cell lysate)

Western blot analysis of Lane 1: Human cell line RT-4 Lane 2: Human cell line U-251MG sp with PCK2 polyclonal antibody (Cat # PAB29436) at 1:250-1:500 dilution.



### Immunohistochemistry (Formalin/PFA-fixed paraffin-embedded sections)

Immunohistochemical staining of human kidney with PCK2 polyclonal antibody (Cat # PAB29436) shows strong cytoplasmic positivity in cells in tubules at 1:500-1:1000 dilution.



### Immunofluorescence

Immunofluorescent staining of human cell line MCF7 with PCK2 polyclonal antibody (Cat # PAB29436) at 1-4 ug/mL concentration shows positivity in mitochondria.

## Specification

<b>Product Description</b>	Rabbit polyclonal antibody raised against recombinant human PCK2.
<b>Immunogen</b>	Recombinant protein corresponding to human PCK2.
<b>Sequence</b>	RLNWHGLSPLGWPSQRSIQTLRVLSGDLGQLPTGIRDFVEHSARLCQPEGIHICDGTEAENTATLT LLEQQGLIRKLPKYNNCWLARTDPKD
<b>Host</b>	Rabbit
<b>Reactivity</b>	Human
<b>Form</b>	Liquid
<b>Purification</b>	Antigen affinity purification
<b>Isotype</b>	IgG
<b>Recommend Usage</b>	Immunohistochemistry (1:500-1:1000) Immunofluorescence (1-4 ug/mL) Western Blot (1:250-1:500) The optimal working dilution should be determined by the end user.
<b>Storage Buffer</b>	In PBS, pH 7.2 (40% glycerol, 0.02% sodium azide)
<b>Storage Instruction</b>	Store at 4°C. For long term storage store at -20°C. Aliquot to avoid repeated freezing and thawing.
<b>Note</b>	This product contains sodium azide: a POISONOUS AND HAZARDOUS SUBSTANCE which should be handled by trained staff only.

## Applications

- Western Blot (Cell lysate)

Western blot analysis of Lane 1: Human cell line RT-4 Lane 2: Human cell line U-251MG sp with PCK2 polyclonal antibody (Cat # PAB29436) at 1:250-1:500 dilution.

- Immunohistochemistry (Formalin/PFA-fixed paraffin-embedded sections)

Immunohistochemical staining of human kidney with PCK2 polyclonal antibody (Cat # PAB29436) shows strong cytoplasmic positivity in cells in tubules at 1:500-1:1000 dilution.

- Immunofluorescence

Immunofluorescent staining of human cell line MCF7 with PCK2 polyclonal antibody (Cat # PAB29436) at 1-4 ug/mL concentration shows positivity in mitochondria.

## Gene Info — PCK2

Entrez GeneID [5106](#)

Gene Name PCK2

Gene Alias PEPCK, PEPCK-M, PEPCK2

Gene Description phosphoenolpyruvate carboxykinase 2 (mitochondrial)

Omim ID [261650](#)

Gene Ontology [Hyperlink](#)

**Gene Summary** This gene encodes a member of the phosphoenolpyruvate carboxykinase (GTP) family. The protein is a mitochondrial enzyme that catalyzes the conversion of oxaloacetate to phosphoenolpyruvate in the presence of GTP. A cytosolic form encoded by a different gene has also been characterized and is the key enzyme of gluconeogenesis in the liver. The encoded protein may serve a similar function, although it is constitutively expressed and not modulated by hormones such as glucagon and insulin that regulate the cytosolic form. Alternatively spliced transcript variants have been described. [provided by RefSeq]

**Other Designations** OTTHUMP00000164700|PEP carboxykinase|mitochondrial phosphoenolpyruvate carboxykinase 2|phosphoenolpyruvate carboxylase|phosphopyruvate carboxylase

## Pathway

- [Adipocytokine signaling pathway](#)
- [Citrate cycle \(TCA cycle\)](#)
- [Glycolysis / Gluconeogenesis](#)
- [Insulin signaling pathway](#)
- [Metabolic pathways](#)
- [PPAR signaling pathway](#)
- [Pyruvate metabolism](#)

## Disease

- [Diabetes Mellitus](#)