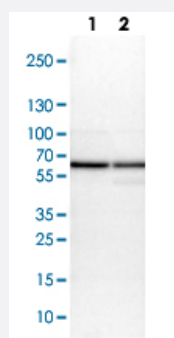


# PDIA3 polyclonal antibody

Catalog # PAB29388

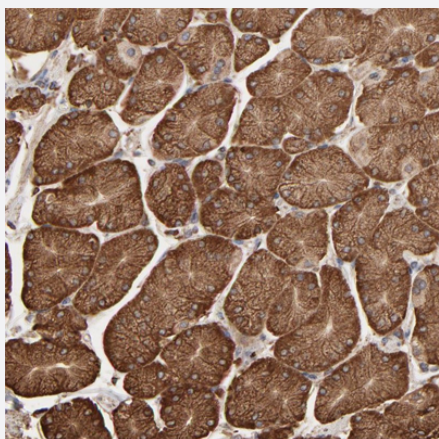
Size 100 uL

## Applications



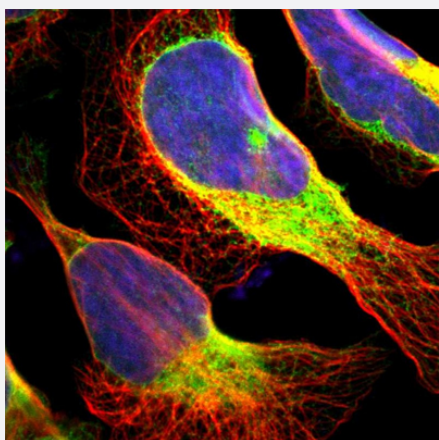
### Western Blot (Cell lysate)

Western blot analysis of Lane 1: NIH-3T3 cell lysate (Mouse embryonic fibroblast cells) Lane 2: NBT-II cell lysate (Rat Wistar bladder tumour cells) with PDIA3 polyclonal antibody (Cat # PAB29388) at 1:100-1:250 dilution.



### Immunohistochemistry (Formalin/PFA-fixed paraffin-embedded sections)

Immunohistochemical staining of human stomach with PDIA3 polyclonal antibody (Cat # PAB29388) shows cytoplasmic positivity in glandular cells at 1:2500-1:5000 dilution.



### Immunofluorescence

Immunofluorescent staining of human cell line U-2 OS with PDIA3 polyclonal antibody (Cat # PAB29388) at 1-4 ug/mL concentration shows positivity in endoplasmic reticulum.

## Specification

<b>Product Description</b>	Rabbit polyclonal antibody raised against recombinant human PDIA3.
<b>Immunogen</b>	Recombinant protein corresponding to human PDIA3.
<b>Sequence</b>	PTLKIFRDGEEAGAYDGPRTADGM/SHLKKQAGPASVPLRTEEEFKKFISDKDASVGGFFDDSFSE AHSEFLKAASNLRDNYRFAHTNVESLVNEYDDNGEGIILFRPSHLTNKFEDK
<b>Host</b>	Rabbit
<b>Reactivity</b>	Human, Mouse, Rat
<b>Form</b>	Liquid
<b>Purification</b>	Antigen affinity purification
<b>Isotype</b>	IgG
<b>Recommend Usage</b>	Immunohistochemistry (1:2500-1:5000) Immunofluorescence (1-4 ug/mL) Western Blot (1:100-1:250) The optimal working dilution should be determined by the end user.
<b>Storage Buffer</b>	In PBS, pH 7.2 (40% glycerol, 0.02% sodium azide)
<b>Storage Instruction</b>	Store at 4°C. For long term storage store at -20°C. Aliquot to avoid repeated freezing and thawing.
<b>Note</b>	This product contains sodium azide: a POISONOUS AND HAZARDOUS SUBSTANCE which should be handled by trained staff only.

## Applications

- Western Blot (Cell lysate)

Western blot analysis of Lane 1: NIH-3T3 cell lysate (Mouse embryonic fibroblast cells) Lane 2: NBT-II cell lysate (Rat Wistar bladder tumour cells) with PDIA3 polyclonal antibody (Cat # PAB29388) at 1:100-1:250 dilution.

- Immunohistochemistry (Formalin/PFA-fixed paraffin-embedded sections)

Immunohistochemical staining of human stomach with PDIA3 polyclonal antibody (Cat # PAB29388) shows cytoplasmic positivity in glandular cells at 1:2500-1:5000 dilution.

- Immunofluorescence

Immunofluorescent staining of human cell line U-2 OS with PDIA3 polyclonal antibody (Cat # PAB29388) at 1-4 ug/mL concentration shows positivity in endoplasmic reticulum.

## Gene Info — PDIA3

Entrez GeneID [2923](#)

Gene Name PDIA3

Gene Alias ER60, ERp57, ERp60, ERp61, GRP57, GRP58, HsT17083, P58, PI-PLC

Gene Description protein disulfide isomerase family A, member 3

Omim ID [602046](#)

Gene Ontology [Hyperlink](#)

**Gene Summary** This gene encodes a protein of the endoplasmic reticulum that interacts with lectin chaperones calreticulin and calnexin to modulate folding of newly synthesized glycoproteins. The protein was once thought to be a phospholipase; however, it has been demonstrated that the protein actually has protein disulfide isomerase activity. It is thought that complexes of lectins and this protein mediate protein folding by promoting formation of disulfide bonds in their glycoprotein substrates. [provided by RefSeq]

**Other Designations** 58 kDa microsomal protein|OTTHUMP00000041709|endoplasmic reticulum P58|glucose regulated protein, 58kDa|phospholipase C-alpha|protein disulfide isomerase-associated 3|protein disulfide isomerase A3

## Pathway

- [Antigen processing and presentation](#)

## Disease

- [Genetic Predisposition to Disease](#)
- [Prostatic Neoplasms](#)