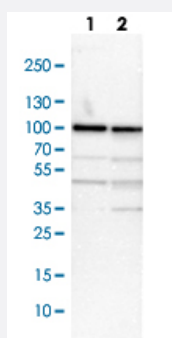


RPS6KA3 polyclonal antibody

Catalog # PAB29387

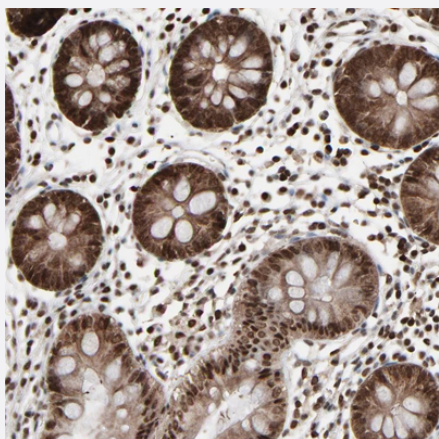
Size 100 uL

Applications



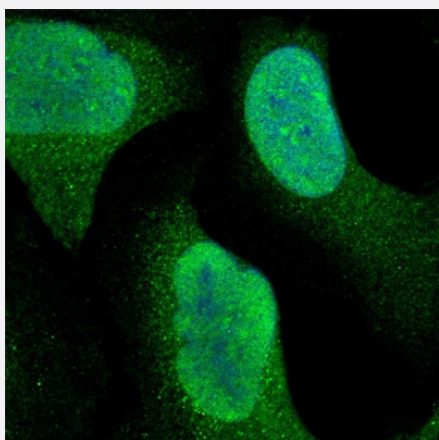
Western Blot (Cell lysate)

Western blot analysis of Lane 1: NIH-3T3 cell lysate (Mouse embryonic fibroblast cells) Lane 2: NBT-II cell lysate (Rat Wistar bladder tumour cells) with RPS6KA3 polyclonal antibody (Cat # PAB29387) at 1:100-1:250 dilution.



Immunohistochemistry (Formalin/PFA-fixed paraffin-embedded sections)

Immunohistochemical staining of human colon with RPS6KA3 polyclonal antibody (Cat # PAB29387) shows strong nuclear and cytoplasmic positivity in glandular cells at 1:500-1:1000 dilution.



Immunofluorescence

Immunofluorescent staining of human cell line U-2 OS with RPS6KA3 polyclonal antibody (Cat # PAB29387) at 1-4 ug/mL concentration shows positivity in nucleus and cytoplasm.

Specification

Product Description	Rabbit polyclonal antibody raised against recombinant human RPS6KA3.
Immunogen	Recombinant protein corresponding to human RPS6KA3.
Sequence	MPLAQLADPWQKMAVESPSDSAENGQQIMDEPMGEEEEINPQTEEVSIKEIAITHHVKEGHEKADP SQFELLKVLGQGSFGKVFVLVKKISGSDARQLYAMKVLKKATLKVDRVRRTKMERDILVEVNHPFIV KLHYAFQTEGKLY
Host	Rabbit
Reactivity	Human, Mouse, Rat
Form	Liquid
Purification	Antigen affinity purification
Isotype	IgG
Recommend Usage	Immunohistochemistry (1:500-1:1000) Immunofluorescence (1-4 ug/mL) Western Blot (1:100-1:250) The optimal working dilution should be determined by the end user.
Storage Buffer	In PBS, pH 7.2 (40% glycerol, 0.02% sodium azide)
Storage Instruction	Store at 4°C. For long term storage store at -20°C. Aliquot to avoid repeated freezing and thawing.
Note	This product contains sodium azide: a POISONOUS AND HAZARDOUS SUBSTANCE which should be handled by trained staff only.

Applications

- Western Blot (Cell lysate)

Western blot analysis of Lane 1: NIH-3T3 cell lysate (Mouse embryonic fibroblast cells) Lane 2: NBT-II cell lysate (Rat Wistar bladder tumour cells) with RPS6KA3 polyclonal antibody (Cat # PAB29387) at 1:100-1:250 dilution.

- Immunohistochemistry (Formalin/PFA-fixed paraffin-embedded sections)

Immunohistochemical staining of human colon with RPS6KA3 polyclonal antibody (Cat # PAB29387) shows strong nuclear and cytoplasmic positivity in glandular cells at 1:500-1:1000 dilution.

- Immunofluorescence

Immunofluorescent staining of human cell line U-2 OS with RPS6KA3 polyclonal antibody (Cat # PAB29387) at 1-4 ug/mL concentration shows positivity in nucleus and cytoplasm.

Gene Info — RPS6KA3

Entrez GeneID	6197
Gene Name	RPS6KA3
Gene Alias	CLS, HU-3, ISPK-1, MAPKAPK1B, MRX19, RSK, RSK2, S6K-alpha3, p90-RSK2, pp90RSK2
Gene Description	ribosomal protein S6 kinase, 90kDa, polypeptide 3
Omim ID	300075 303600
Gene Ontology	Hyperlink
Gene Summary	This gene encodes a member of the RSK (ribosomal S6 kinase) family of serine/threonine kinase s. This kinase contains 2 non-identical kinase catalytic domains and phosphorylates various subst rates, including members of the mitogen-activated kinase (MAPK) signalling pathway. The activity of this protein has been implicated in controlling cell growth and differentiation. Mutations in this g ene have been associated with Coffin-Lowry syndrome (CLS). [provided by RefSeq
Other Designations	OTTHUMP00000023036 insulin-stimulated protein kinase 1 mental retardation, X-linked 19 ribos omal protein S6 kinase, 90kD, polypeptide 3

Pathway

- [Long-term potentiation](#)
- [MAPK signaling pathway](#)
- [mTOR signaling pathway](#)
- [Neurotrophin signaling pathway](#)

Disease

- [Head and Neck Neoplasms](#)
- [Neoplasm Recurrence](#)

- [Neoplasms](#)