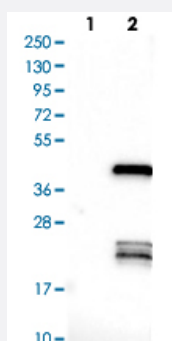


CEBPE polyclonal antibody

Catalog # PAB29383 Size 100 uL

Applications

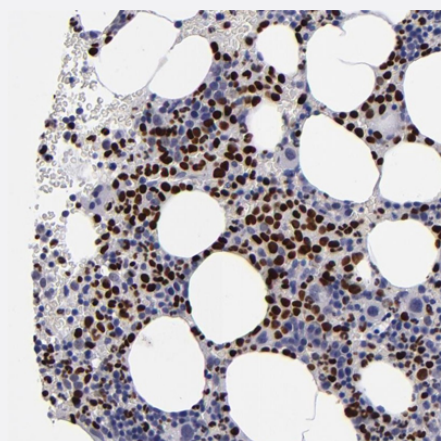


Western Blot (Transfected lysate)

Western blot analysis of Lane 1: Negative control (vector only transfected HEK293T lysate) Lane 2: Over-expression lysate (Co-expressed with a C-terminal myc-DDK tag (~3.1 kDa) in mammalian HEK293T cells) with CEBPE polyclonal antibody (Cat # PAB29383) at 1:100-1:250 dilution.

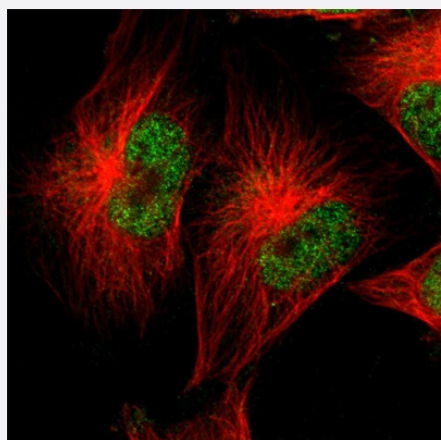
Immunohistochemistry (Formalin/PFA-fixed paraffin-embedded sections)

Immunohistochemical staining of human bone marrow with CEBPE polyclonal antibody (Cat # PAB29383) shows strong nuclear positivity in bone marrow poietic cells at 1:50-1:200 dilution.



Immunofluorescence

Immunofluorescent staining of human cell line U-251 MG with CEBPE polyclonal antibody (Cat # PAB29383) at 1-4 ug/mL concentration shows positivity in nucleus but excluded from the nucleoli.



Specification

Product Description	Rabbit polyclonal antibody raised against recombinant human CEBPE.
Immunogen	Recombinant protein corresponding to human CEBPE.
Sequence	SHGTYECEPRGGQQPLEFSGGRAGPGELGDMCEHEASIDLSAYESGEEQLLSDLFAVKPAPE ARGLKGPGTPAFPHYLPPDPRPFAYPPHTFGPDRKALGPGIYSSPGSYDPRAVAVKEEPR
Host	Rabbit
Reactivity	Human
Form	Liquid
Purification	Antigen affinity purification
Isotype	IgG
Recommend Usage	Immunohistochemistry (1:50-1:200) Immunofluorescence (1-4 ug/mL) Western Blot (1:100-1:250) The optimal working dilution should be determined by the end user.
Storage Buffer	In PBS, pH 7.2 (40% glycerol, 0.02% sodium azide)
Storage Instruction	Store at 4°C. For long term storage store at -20°C. Aliquot to avoid repeated freezing and thawing.
Note	This product contains sodium azide: a POISONOUS AND HAZARDOUS SUBSTANCE which should be handled by trained staff only.

Applications

- Western Blot (Transfected lysate)

Western blot analysis of Lane 1: Negative control (vector only transfected HEK293T lysate) Lane 2: Over-expression lysate (Co-expressed with a C-terminal myc-DDK tag (~3.1 kDa) in mammalian HEK293T cells) with CEBPE polyclonal antibody (Cat # PAB29383) at 1:100-1:250 dilution.

- Immunohistochemistry (Formalin/PFA-fixed paraffin-embedded sections)

Immunohistochemical staining of human bone marrow with CEBPE polyclonal antibody (Cat # PAB29383) shows strong nuclear positivity in bone marrow poietic cells at 1:50-1:200 dilution.

- Immunofluorescence

Immunofluorescent staining of human cell line U-251 MG with CEBPE polyclonal antibody (Cat # PAB29383) at 1-4 ug/mL concentration shows positivity in nucleus but excluded from the nucleoli.

Gene Info — CEBPE

Entrez GeneID [1053](#)

Gene Name CEBPE

Gene Alias C/EBP-epsilon, CRP1

Gene Description CCAAT/enhancer binding protein (C/EBP), epsilon

Omim ID [245480 600749](#)

Gene Ontology [Hyperlink](#)

Gene Summary The protein encoded by this gene is a bZIP transcription factor which can bind as a homodimer to certain DNA regulatory regions. It can also form heterodimers with the related protein CEBP-delta . The encoded protein may be essential for terminal differentiation and functional maturation of committed granulocyte progenitor cells. Mutations in this gene have been associated with Specific Granule Deficiency, a rare congenital disorder. Multiple variants of this gene have been described , but the full-length nature of only one has been determined. [provided by RefSeq

Other Designations CCAAT/enhancer binding protein epsilon

Disease

- [Genetic Predisposition to Disease](#)
- [Precursor B-Cell Lymphoblastic Leukemia-Lymphoma](#)