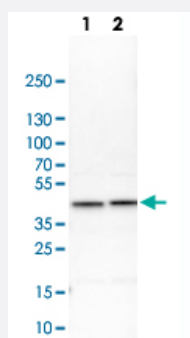


AHSA1 polyclonal antibody

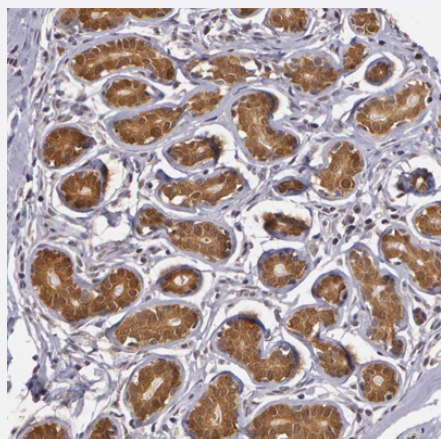
Catalog # PAB29351 Size 100 uL

Applications



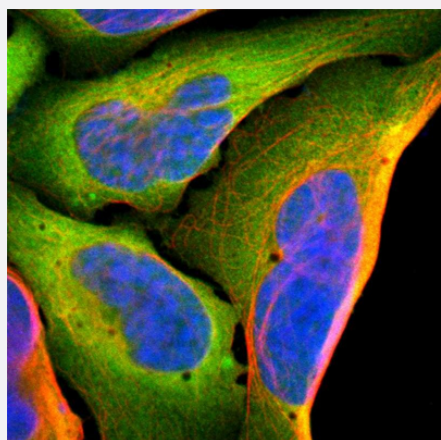
Western Blot (Cell lysate)

Western blot analysis of Lane 1: NIH-3T3 cell lysate (Mouse embryonic fibroblast cells) Lane 2: NBT-II cell lysate (Rat Wistar bladder tumour cells) with AHSA1 polyclonal antibody (Cat # PAB29351) at 1:250-1:500 dilution.



Immunohistochemistry (Formalin/PFA-fixed paraffin-embedded sections)

Immunohistochemical staining of human breast with AHSA1 polyclonal antibody (Cat # PAB29351) show strong cytoplasmic positivity in glandular cells at 1:200-1:500 dilution.



Immunofluorescence

Immunofluorescent staining of human cell line U-2 OS with AHSA1 polyclonal antibody (Cat # PAB29351) at 1-4 ug/mL concentration shows positivity in cytoplasm.

Specification

Product Description	Rabbit polyclonal antibody raised against recombinant human AHSA1.
Immunogen	Recombinant protein corresponding to human AHSA1.
Sequence	PTMNGESVDPVGGPALKTEERKAKPAPSKTQARPVGVKIPTCKITLKETFLTSPHEELYRVFTTQEL VQAFTHAPATLEADRGGKFHMDGNVSGEFTDLVPEKHVMKWRFKSWPEGHFATITLTFIDKNG ETELCMEGRGIPAE
Host	Rabbit
Reactivity	Human, Mouse, Rat
Form	Liquid
Purification	Antigen affinity purification
Isotype	IgG
Recommend Usage	Immunohistochemistry (1:200-1:500) Immunofluorescence (1-4 ug/mL) Western Blot (1:250-1:500) The optimal working dilution should be determined by the end user.
Storage Buffer	In PBS, pH 7.2 (40% glycerol, 0.02% sodium azide)
Storage Instruction	Store at 4°C. For long term storage store at -20°C. Aliquot to avoid repeated freezing and thawing.
Note	This product contains sodium azide: a POISONOUS AND HAZARDOUS SUBSTANCE which should be handled by trained staff only.

Applications

- Western Blot (Cell lysate)

Western blot analysis of Lane 1: NIH-3T3 cell lysate (Mouse embryonic fibroblast cells) Lane 2: NBT-II cell lysate (Rat Wistar bladder tumour cells) with AHSA1 polyclonal antibody (Cat # PAB29351) at 1:250-1:500 dilution.

- Immunohistochemistry (Formalin/PFA-fixed paraffin-embedded sections)

Immunohistochemical staining of human breast with AHSA1 polyclonal antibody (Cat # PAB29351) show strong cytoplasmic positivity in glandular cells at 1:200-1:500 dilution.

- Immunofluorescence

Immunofluorescent staining of human cell line U-2 OS with AHSA1 polyclonal antibody (Cat # PAB29351) at 1-4 ug/mL concentration shows positivity in cytoplasm.

Gene Info — AHSA1

Entrez GeneID	10598
---------------	-----------------------

Gene Name	AHSA1
-----------	-------

Gene Alias	AHA1, C14orf3, p38
------------	--------------------

Gene Description	AHA1, activator of heat shock 90kDa protein ATPase homolog 1 (yeast)
------------------	--

Omim ID	608466
---------	------------------------

Gene Ontology	Hyperlink
---------------	---------------------------

Gene Summary	O
--------------	---

Other Designations	AHA1, activator of heat shock 90kDa protein ATPase homolog 1
--------------------	--