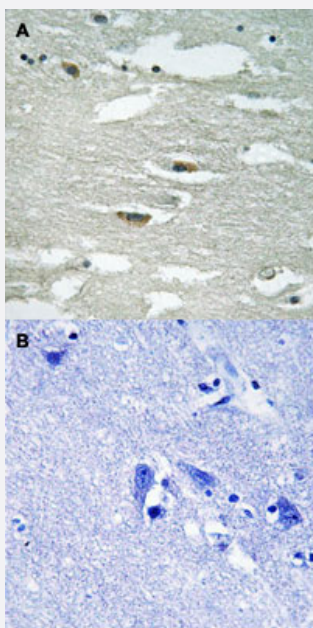


ILK (phospho S246) polyclonal antibody

Catalog # PAB29300 Size 100 uL

Applications



Immunohistochemistry (Formalin/PFA-fixed paraffin-embedded sections)

Immunohistochemical staining (Formalin-fixed paraffin-embedded sections) of human brain tissue with ILK (phospho S246) polyclonal antibody (Cat# PAB29300) without blocking peptide (A) or preincubated with blocking peptide (B) under 1:50-1:100 dilution.

Specification

Product Description	Rabbit polyclonal antibody raised against synthetic phosphopeptide of human ILK.
Immunogen	Synthetic phosphopeptide (conjugated with KLH) corresponding to residues surrounding S246 of human ILK.
Host	Rabbit
Theoretical MW (kDa)	51
Reactivity	Human
Specificity	ILK (phospho S246) polyclonal antibody detects endogenous levels of human ILK only when phosphorylated at serine 246.
Form	Liquid

Purification	Affinity Chromatography
Recommend Usage	Immunohistochemistry (1:50~1:100) The optimal working dilution should be determined by the end user.
Storage Buffer	In PBS (without Mg ²⁺ and Ca ²⁺), 150 mM NaCl, pH 7.4 (50% glycerol, 0.02% sodium azide)
Storage Instruction	Store at -20°C. Aliquot to avoid repeated freezing and thawing.
Note	This product contains sodium azide: a POISONOUS AND HAZARDOUS SUBSTANCE which should be handled by trained staff only.

Applications

- Immunohistochemistry (Formalin/PFA-fixed paraffin-embedded sections)

Immunohistochemical staining (Formalin-fixed paraffin-embedded sections) of human brain tissue with ILK (phospho S246) polyclonal antibody (Cat# PAB29300) without blocking peptide (A) or preincubated with blocking peptide (B) under 1:50-1:100 dilution.

Gene Info — ILK

Entrez GeneID	3611
Protein Accession#	Q13418
Gene Name	ILK
Gene Alias	DKFZp686F1765, P59
Gene Description	integrin-linked kinase
Omim ID	602366
Gene Ontology	Hyperlink
Gene Summary	Transduction of extracellular matrix signals through integrins influences intracellular and extracellular functions, and appears to require interaction of integrin cytoplasmic domains with cellular proteins. Integrin-linked kinase (ILK), interacts with the cytoplasmic domain of beta-1 integrin. This gene encodes a serine/threonine protein kinase with 4 ankyrin-like repeats, which associates with the cytoplasmic domain of beta integrins and acts as a proximal receptor kinase regulating integrin-mediated signal transduction. Multiple alternatively spliced transcript variants encoding the same protein have been found for this gene. [provided by RefSeq]
Other Designations	-

Pathway

- [Endometrial cancer](#)
- [Focal adhesion](#)
- [PPAR signaling pathway](#)