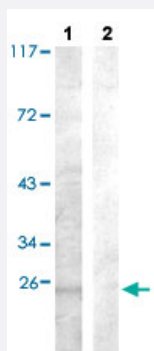


# BAD (phospho S91/S128) polyclonal antibody

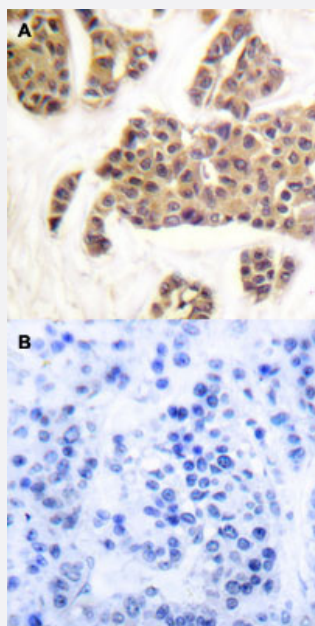
Catalog # PAB29276 Size 100 uL

## Applications



### Western Blot (Cell lysate)

Western blot analysis of Lane 1: TNF- $\alpha$  treated COS-7 cells, Lane 2: antigen-specific peptide treated COS-7 cells with BAD (phospho S91/S128) polyclonal antibody (Cat# PAB29276) at 1:500-1:1000 dilution.



### Immunohistochemistry (Formalin/PFA-fixed paraffin-embedded sections)

Immunohistochemical staining (Formalin-fixed paraffin-embedded sections) of human breast cancer tissue with BAD (phospho S91/S128) polyclonal antibody (Cat# PAB29276) without blocking peptide (A) or preincubated with blocking peptide (B) under 1:50-1:100 dilution.

## Specification

### Product Description

Rabbit polyclonal antibody raised against synthetic phosphopeptide of human BAD.

### Immunogen

Synthetic phosphopeptide (conjugated with KLH) corresponding to residues surrounding S91 of human BAD.

Host	Rabbit
Theoretical MW (kDa)	22
Reactivity	Human, Mouse
Specificity	BAD (phospho S91/S128) polyclonal antibody detects endogenous levels of human BAD only when phosphorylated at serine 91/serine 128.
Form	Liquid
Purification	Affinity Chromatography
Recommend Usage	Immunohistochemistry (1:50~1:100) Western Blot (1:500~1:1000) The optimal working dilution should be determined by the end user.
Storage Buffer	In PBS (without $Mg^{2+}$ and $Ca^{2+}$ ), 150 mM NaCl, pH 7.4 (50% glycerol, 0.02% sodium azide)
Storage Instruction	Store at -20°C. Aliquot to avoid repeated freezing and thawing.
Note	This product contains sodium azide: a POISONOUS AND HAZARDOUS SUBSTANCE which should be handled by trained staff only.

## Applications

- Western Blot (Cell lysate)

Western blot analysis of Lane 1: TNF- $\alpha$  treated COS-7 cells, Lane 2: antigen-specific peptide treated COS-7 cells with BAD (phospho S91/S128) polyclonal antibody (Cat# PAB29276) at 1:500-1:1000 dilution.

- Immunohistochemistry (Formalin/PFA-fixed paraffin-embedded sections)

Immunohistochemical staining (Formalin-fixed paraffin-embedded sections) of human breast cancer tissue with BAD (phospho S91/S128) polyclonal antibody (Cat# PAB29276) without blocking peptide (A) or preincubated with blocking peptide (B) under 1:50-1:100 dilution.

## Gene Info — BAD

Entrez GeneID	<a href="#">572</a>
Protein Accession#	<a href="#">Q92934</a>
Gene Name	BAD
Gene Alias	BBC2, BCL2L8

Gene Description	BCL2-associated agonist of cell death
Omim ID	<a href="#">603167</a>
Gene Ontology	<a href="#">Hyperlink</a>
Gene Summary	The protein encoded by this gene is a member of the BCL-2 family. BCL-2 family members are known to be regulators of programmed cell death. This protein positively regulates cell apoptosis by forming heterodimers with BCL-xL and BCL-2, and reversing their death repressor activity. Proapoptotic activity of this protein is regulated through its phosphorylation. Protein kinases AKT and MAP kinase, as well as protein phosphatase calcineurin were found to be involved in the regulation of this protein. Alternative splicing of this gene results in two transcript variants which encode the same isoform. [provided by RefSeq]
Other Designations	BCL-X/BCL-2 binding protein BCL2-antagonist of cell death protein BCL2-binding component 6 BCL2-binding protein

## Pathway

- [Acute myeloid leukemia](#)
- [Amyotrophic lateral sclerosis \(ALS\)](#)
- [Apoptosis](#)
- [Chronic myeloid leukemia](#)
- [Colorectal cancer](#)
- [Endometrial cancer](#)
- [ErbB signaling pathway](#)
- [Focal adhesion](#)
- [Insulin signaling pathway](#)
- [Melanoma](#)
- [Neurotrophin signaling pathway](#)
- [Non-small cell lung cancer](#)
- [Pancreatic cancer](#)
- [Pathways in cancer](#)
- [Prostate cancer](#)

- [VEGF signaling pathway](#)

## Disease

- [Cardiovascular Diseases](#)
- [Diabetes Mellitus](#)
- [Edema](#)
- [Genetic Predisposition to Disease](#)
- [Lymphoma](#)
- [Parkinson disease](#)
- [Thyroid Neoplasms](#)