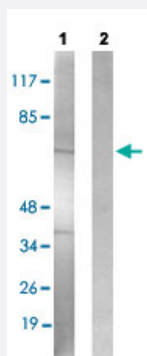


SF1 (phospho S82) polyclonal antibody

Catalog # PAB29266

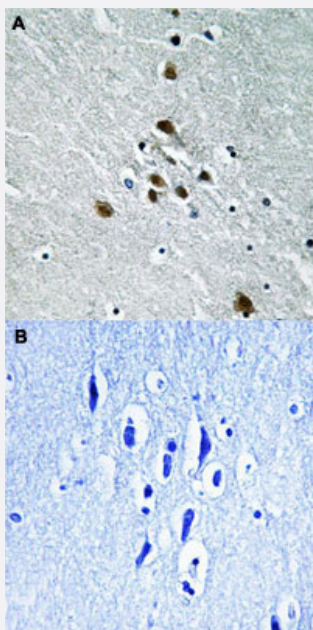
Size 100 uL

Applications



Western Blot (Cell lysate)

Western blot analysis of Lane 1: anisomycin treated HUVEC cells, Lane 2: antigen-specific peptide treated HUVEC cells with SF1 (phospho S82) polyclonal antibody (Cat# PAB29266) at 1:500-1:1000 dilution.



Immunohistochemistry (Formalin/PFA-fixed paraffin-embedded sections)

Immunohistochemical staining (Formalin-fixed paraffin-embedded sections) of human brain tissue with SF1 (phospho S82) polyclonal antibody (Cat# PAB29266) without blocking peptide (A) or preincubated with blocking peptide (B) under 1:50-1:100 dilution.

Specification

Product Description

Rabbit polyclonal antibody raised against synthetic phosphopeptide of human SF1.

Immunogen

Synthetic phosphopeptide (conjugated with KLH) corresponding to residues surrounding S82 of human SF1.

| | |
|----------------------|--|
| Host | Rabbit |
| Theoretical MW (kDa) | 68 |
| Reactivity | Human, Mouse |
| Specificity | SF1 (phospho S82) polyclonal antibody detects endogenous levels of human SF1 only when phosphorylated at serine 82. |
| Form | Liquid |
| Purification | Affinity Chromatography |
| Recommend Usage | Immunohistochemistry (1:50~1:100) Western Blot (1:500~1:1000) The optimal working dilution should be determined by the end user. |
| Storage Buffer | In PBS (without Mg^{2+} and Ca^{2+}), 150 mM NaCl, pH 7.4 (50% glycerol, 0.02% sodium azide) |
| Storage Instruction | Store at -20°C. Aliquot to avoid repeated freezing and thawing. |
| Note | This product contains sodium azide: a POISONOUS AND HAZARDOUS SUBSTANCE which should be handled by trained staff only. |

Applications

- Western Blot (Cell lysate)

Western blot analysis of Lane 1: anisomycin treated HUVEC cells, Lane 2: antigen-specific peptide treated HUVEC cells with SF1 (phospho S82) polyclonal antibody (Cat# PAB29266) at 1:500-1:1000 dilution.

- Immunohistochemistry (Formalin/PFA-fixed paraffin-embedded sections)

Immunohistochemical staining (Formalin-fixed paraffin-embedded sections) of human brain tissue with SF1 (phospho S82) polyclonal antibody (Cat# PAB29266) without blocking peptide (A) or preincubated with blocking peptide (B) under 1:50-1:100 dilution.

Gene Info — SF1

| | |
|--------------------|------------------------|
| Entrez GeneID | 7536 |
| Protein Accession# | Q15637 |
| Gene Name | SF1 |
| Gene Alias | D11S636, ZFM1, ZNF162 |

| | |
|--------------------|--|
| Gene Description | splicing factor 1 |
| Omim ID | 601516 |
| Gene Ontology | Hyperlink |
| Other Designations | OTTHUMP00000069749 OTTHUMP00000069750 OTTHUMP00000069752 zinc finger protein 162 |