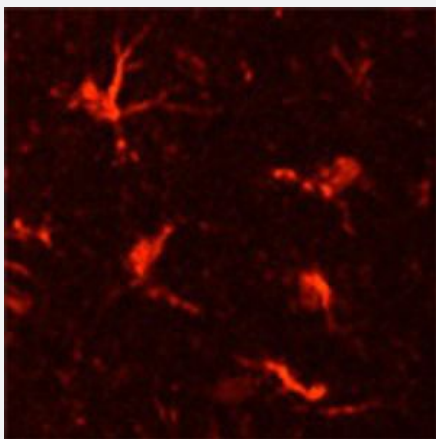


Itgam polyclonal antibody

Catalog # PAB29076 Size 100 ug

Applications



Immunocytochemical staining of Itgam polyclonal antibody (Cat # PAB29076) (at a concentration of 100 ug/mL).
Itgam staining of the microglial cells in mouse cerebral cortex (red).

Specification

Product Description	Chicken polyclonal antibody raised against recombinant Mouse Itgam.
Immunogen	A KLH-conjugated synthetic peptide corresponding to a region near the center of the extracellular domain of Itgam gene product.
Host	Chicken
Reactivity	Mouse
Form	Liquid
Purification	Antigen affinity purification
Isotype	IgY
Quality Control Testing	Immunocytochemistry Immunocytochemical staining of Itgam polyclonal antibody (Cat # PAB29076) (at a concentration of 100 ug/mL). Itgam staining of the microglial cells in mouse cerebral cortex (red).

Recommend Usage	Immunocytochemistry Immunohistochemistry The optimal working dilution should be determined by the end user.
Storage Buffer	In PBS, pH 7.2 (0.02% sodium azide)
Storage Instruction	Store at 4°C and avoid from light. Aliquot to avoid repeated freezing and thawing.
Note	This product contains sodium azide: a POISONOUS AND HAZARDOUS SUBSTANCE which should be handled by trained staff only.

Applications

- Immunohistochemistry
- Immunocytochemistry

Gene Info — Itgam

Entrez GeneID	16409
Gene Name	Itgam
Gene Alias	CD11b/CD18, CR3, CR3A, Cd11b, F730045J24Rik, Ly-40, MAC1, Mac-1, Mac-1a
Gene Description	integrin alpha M
Gene Ontology	Hyperlink
Other Designations	CD11B (p170) Mac-1 alpha cell surface glycoprotein MAC-1 alpha subunit complement component receptor 3 alpha complement component receptor 3 alpha-a complement receptor type 3 leukocyte adhesion receptor MO1 macrophage antigen alpha