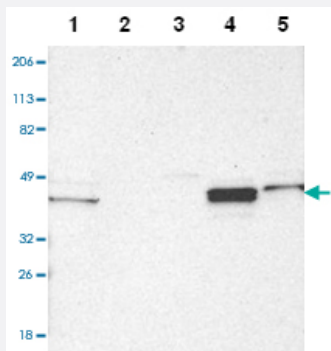


NDRG2 polyclonal antibody

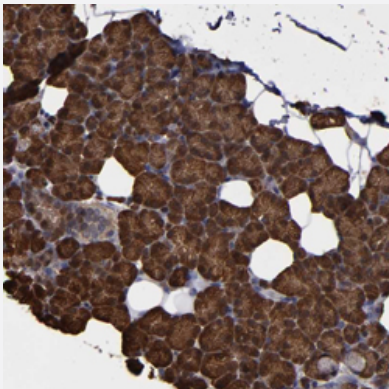
Catalog # PAB28730 Size 100 uL

Applications



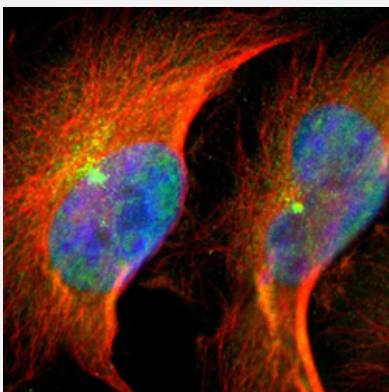
Western Blot

Western blot analysis of Lane 1: Human cell line RT-4, Lane 2: Human cell line U-251MG sp, Lane 3: Human cell line A-431, Lane 4: Human liver tissue, Lane 5: Human tonsil tissue with NDRG2 polyclonal antibody (Cat # PAB28730) at 1:2500-1:5000 dilution.



Immunohistochemistry

Immunohistochemical staining of human salivary gland with NDRG2 polyclonal antibody (Cat # PAB28730) shows strong cytoplasmic positivity in glandular cells at 1:2500-1:5000 dilution.



Immunofluorescence

Immunofluorescent staining of human cell line U-251MG with NDRG2 polyclonal antibody (Cat # PAB28730) at 1-4 ug/mL shows positivity in nucleus but not nucleoli, cytoplasm and centrosome.

Specification

Product Description	Rabbit polyclonal antibody raised against recombinant NDRG2.
Immunogen	Recombinant protein corresponding to amino acids of human NDRG2.
Sequence	TGLTSSIPEMILGHLFSQEELSGNSELIQKYRNIITHAPNLDNIELYWNSYNNRRDLNFERGGDITLRC PVMLVVGDAQPHEDAVVEECNSKLDPTQTSFLKMADSGGQP
Host	Rabbit
Reactivity	Human
Form	Liquid
Purification	Antigen affinity purification
Isotype	IgG
Recommend Usage	Immunohistochemistry (1:2500-1:5000) Immunofluorescence (1-4 ug/ml) Western Blot (1:100-1:250) The optimal working dilution should be determined by the end user.
Storage Buffer	In PBS, pH 7.2 (40% glycerol, 0.02% sodium azide).
Storage Instruction	Store at 4°C. For long term storage store at -20°C. Aliquot to avoid repeated freezing and thawing.
Note	This product contains sodium azide: a POISONOUS AND HAZARDOUS SUBSTANCE which should be handled by trained staff only.

Applications

- Western Blot

Western blot analysis of Lane 1: Human cell line RT-4, Lane 2: Human cell line U-251MG sp, Lane 3: Human cell line A-431, Lane 4: Human liver tissue, Lane5: Human tonsil tissue with NDRG2 polyclonal antibody (Cat # PAB28730) at 1:2500-1:5000 dilution.

- Immunohistochemistry

Immunohistochemical staining of human salivary gland with NDRG2 polyclonal antibody (Cat # PAB28730) shows strong cytoplasmic positivity in glandular cells at 1:2500-1:5000 dilution.

- Immunofluorescence

Immunofluorescent staining of human cell line U-251MG with NDRG2 polyclonal antibody (Cat # PAB28730) at 1-4 ug/mL shows positivity in nucleus but not nucleoli, cytoplasm and centrosome.

Gene Info — NDRG2

Entrez GeneID	57447
Gene Name	NDRG2
Gene Alias	DKFZp781G1938, FLJ25522, KIAA1248, SYLD
Gene Description	NDRG family member 2
Omim ID	605272
Gene Ontology	Hyperlink
Gene Summary	This gene is a member of the N-myc downregulated gene family which belongs to the alpha/beta hydrolase superfamily. The protein encoded by this gene is a cytoplasmic protein that may play a role in neurite outgrowth. This gene may be involved in glioblastoma carcinogenesis. Several alternatively spliced transcript variants of this gene have been described, but the full-length nature of some of these variants has not been determined. [provided by RefSeq]
Other Designations	N-myc downstream regulator 2 N-myc downstream-regulated gene 2 NDR1-related protein NDR2 OTTHUMP00000164407 cytoplasmic protein Ndr1 syld709613 protein

Publication Reference

- [Combined Aberrant Expression of NDRG2 and LDHA Predicts Hepatocellular Carcinoma Prognosis and Mediates the Anti-tumor Effect of Gemcitabine.](#)

Guo Y, Li X, Sun X, Wang J, Yang X, Zhou X, Liu X, Liu W, Yuan J, Yao L, Li X, Shen L.

International Journal of Biological Sciences 2019 Jul; 15(9):1771.

Application: IHC, WB, Human, HepG2, HCC, HHCC, Huh7, QSG-7701 cells, Liver