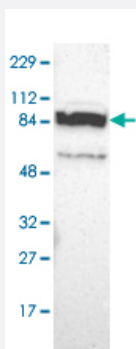


PPFIBP2 polyclonal antibody

Catalog # PAB28658

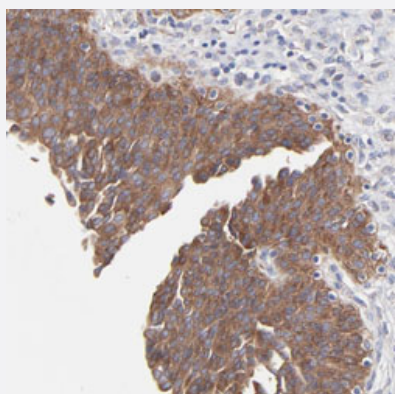
Size 100 uL

Applications



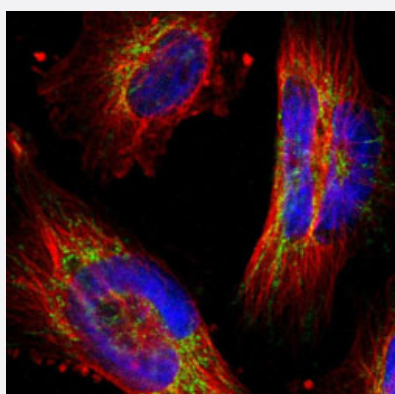
Western Blot

Western blot analysis of Human cell line RT-4 with PPFIBP2 polyclonal antibody (Cat # PAB28658) at 1:100-1:250 dilution.



Immunohistochemistry (Formalin/PFA-fixed paraffin-embedded sections)

Immunohistochemical staining of human urinary bladder with PPFIBP2 polyclonal antibody (Cat # PAB28658) shows strong cytoplasmic positivity in urothelial cells at 1:50-1:200 dilution.



Immunofluorescence

Immunofluorescent staining of human cell line U373 MG with PPFIBP2 polyclonal antibody (Cat # PAB28658) at 1-4 ug/mL shows positivity in mitochondria.

Specification

Product Description	Rabbit polyclonal antibody raised against recombinant PPFIBP2.
Immunogen	Recombinant protein corresponding to amino acids of human PPFIBP2.
Sequence	SGATPNGEAAKSPPTICQPDATGSSLLRLRDTESGWDDTAVVNDLSSTSSGTESGPQSPLTPDG KRNPKGKKFWGKIRRTQSGNFYDTLGMAEFRRGGL
Host	Rabbit
Reactivity	Human
Form	liquid
Purification	Antigen affinity purification
Isotype	IgG
Recommend Usage	Immunohistochemistry (Formalin/PFA-fixed paraffin-embedded sections)(1:50-1:200) Immunofluorescence (1-4 ug/ml) Western Blot (1:100-1:250) The optimal working dilution should be determined by the end user.
Storage Buffer	In PBS, pH 7.2 (40% glycerol, 0.02% sodium azide)
Storage Instruction	Store at 4°C. For long term storage store at -20°C. Aliquot to avoid repeated freezing and thawing.
Note	This product contains sodium azide: a POISONOUS AND HAZARDOUS SUBSTANCE which should be handled by trained staff only.

Applications

- Western Blot

Western blot analysis of Human cell line RT-4 with PPFIBP2 polyclonal antibody (Cat # PAB28658) at 1:100-1:250 dilution.

- Immunohistochemistry (Formalin/PFA-fixed paraffin-embedded sections)

Immunohistochemical staining of human urinary bladder with PPFIBP2 polyclonal antibody (Cat # PAB28658) shows strong cytoplasmic positivity in urothelial cells at 1:50-1:200 dilution.

- Immunofluorescence

Immunofluorescent staining of human cell line U373 MG with PPFIBP2 polyclonal antibody (Cat # PAB28658) at 1-4 ug/mL shows positivity in mitochondria.

Gene Info — PPFIBP2

Entrez GeneID	8495
Gene Name	PPFIBP2
Gene Alias	Cclp1, DKFZp781K06126, MGC42541
Gene Description	PTPRF interacting protein, binding protein 2 (liprin beta 2)
Omim ID	603142
Gene Ontology	Hyperlink
Gene Summary	PPFIBP2, or liprin-beta-2, belongs to the liprin-beta family. See liprin-beta-1 (MIM 603141) for background on liprins.[supplied by OMIM]
Other Designations	-

Disease

- [Breast Neoplasms](#)
- [Genetic Predisposition to Disease](#)
- [Tobacco Use Disorder](#)