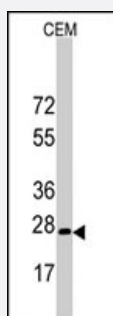


# BARX1 polyclonal antibody

Catalog # PAB2849

Size 400 uL

## Applications



### Western Blot (Cell lysate)

Western blot analysis of BARX1 polyclonal antibody (Cat # PAB2849) in CEM cell line lysates (35 ug/lane). BarX1 (arrow) was detected using the purified polyclonal antibody.

## Specification

<b>Product Description</b>	Rabbit polyclonal antibody raised against synthetic peptide of BARX1.
<b>Immunogen</b>	A synthetic peptide (conjugated with KLH) corresponding to C-terminus of human BARX1.
<b>Host</b>	Rabbit
<b>Reactivity</b>	Human
<b>Form</b>	Liquid
<b>Purification</b>	Ammonium sulfate precipitation
<b>Recommend Usage</b>	Western Blot (1:1000) The optimal working dilution should be determined by the end user.
<b>Storage Buffer</b>	In PBS (0.09% sodium azide)
<b>Storage Instruction</b>	Store at 4°C. For long term storage store at -20°C. Aliquot to avoid repeated freezing and thawing.
<b>Note</b>	This product contains sodium azide: a POISONOUS AND HAZARDOUS SUBSTANCE which should be handled by trained staff only.

## Applications

- Western Blot (Cell lysate)

Western blot analysis of BARX1 polyclonal antibody (Cat # PAB2849) in CEM cell line lysates (35 ug/lane). BarX1 (arrow) was detected using the purified polyclonal antibody.

## Gene Info — BARX1

Entrez GeneID [56033](#)

Protein Accession# [NP\\_067545:Q9HBU1](#)

Gene Name BARX1

Gene Alias -

Gene Description BARX homeobox 1

Omim ID [603260](#)

Gene Ontology [Hyperlink](#)

**Gene Summary** This gene encodes a member of the Bar subclass of homeobox transcription factors. Studies of the mouse and chick homolog suggest the encoded protein may play a role in developing teeth and craniofacial mesenchyme of neural crest origin. The protein may also be associated with differentiation of stomach epithelia. [provided by RefSeq]

**Other Designations** BarH-like homeobox 1

## Publication Reference

- [Prognostic implications of intraventricular conduction defects in patients undergoing stress echocardiography for suspected coronary artery disease.](#)

Cortigiani L, Bigi R, Gigli G, Coletta C, Mariotti E, Dodi C, Astarita C, Picano E.

The American Journal of Medicine 2003 Jul; 115(1):12.

- [Cloning, characterization, localization, and mutational screening of the human BARX1 gene.](#)

Gould DB, Walter MA.

Genomics 2000 Sep; 68(3):336.

## Disease

- [Cleft Lip](#)
- [Cleft Palate](#)
- [Tooth Abnormalities](#)