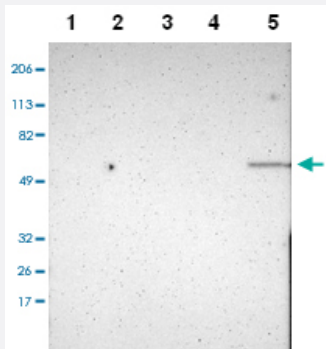


ELF1 polyclonal antibody

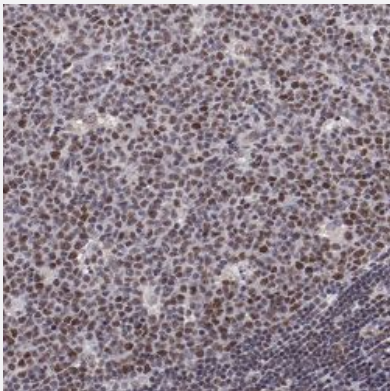
Catalog # PAB28481 Size 100 uL

Applications



Western Blot

Western blot analysis of Lane 1: RT-4, Lane 2: U-251 MG, Lane 3: A-431, Lane 4: Liver, Lane 5: Tonsil with ELF1 polyclonal antibody.



Immunohistochemistry (Formalin/PFA-fixed paraffin-embedded sections)

Immunohistochemical staining of human lymph node with ELF1 polyclonal antibody (Cat # PAB28481) shows distinct nuclear positivity in germinal center cells.

Specification

Product Description	Rabbit polyclonal antibody raised against recombinant ELF1.
Immunogen	Recombinant protein corresponding to amino acids of human ELF1
Sequence	PSSSIESSDPSLSSSSATSNRNQTSRSRVSSSPGVKGGATTVLKPGNSKAAKPKDPVEVAQPSEV LRTVQPTQSPYPTQLFRTVHVVQPVQAVPEGEAARTSTMQDET LNSSVQSIRTIQAPTQVPVVVS PRNQQL
Host	Rabbit
Reactivity	Human

Form	Liquid
Purification	Antigen affinity purification
Isotype	IgG
Recommend Usage	Immunohistochemistry(1:50-1:200) Western Blot(1:100-1:250) Immunofluorescence(1-4 ug/ml) The optimal working dilution should be determined by the end user.
Storage Buffer	In PBS, pH 7.2 (40% glycerol, 0.02% sodium azide)
Storage Instruction	Store at 4°C. For long term storage store at -20°C. Aliquot to avoid repeated freezing and thawing.
Note	This product contains sodium azide: a POISONOUS AND HAZARDOUS SUBSTANCE which should be handled by trained staff only.

Applications

- Western Blot

Western blot analysis of Lane 1: RT-4, Lane 2: U-251 MG, Lane 3: A-431, Lane 4: Liver, Lane 5: Tonsil with ELF1 polyclonal antibody.

- Immunohistochemistry (Formalin/PFA-fixed paraffin-embedded sections)

Immunohistochemical staining of human lymph node with ELF1 polyclonal antibody (Cat # PAB28481) shows distinct nuclear positivity in germinal center cells.

Gene Info — ELF1

Entrez GeneID	1997
Protein Accession#	E9PDQ9
Gene Name	ELF1
Gene Alias	-
Gene Description	E74-like factor 1 (ets domain transcription factor)
Omim ID	189973
Gene Ontology	Hyperlink

Gene Summary

This gene encodes an E26 transformation-specific related transcription factor. The encoded protein is primarily expressed in lymphoid cells and acts as both an enhancer and a repressor to regulate transcription of various genes. Alternative splicing results in multiple transcript variants. [provided by RefSeq]

Other Designations

OTTHUMP00000018310

Disease

- [Tobacco Use Disorder](#)