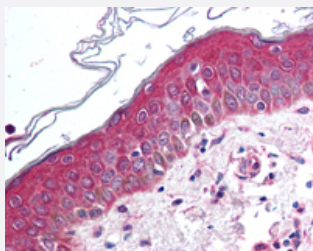


# WNT10B polyclonal antibody

Catalog # PAB28376

Size 50 ug

## Applications



### Immunohistochemistry (Formalin/PFA-fixed paraffin-embedded sections)

Immunohistochemistry (Formalin/PFA-fixed paraffin-embedded sections) of human skin with WNT10B polyclonal antibody (Cat # PAB28376).  
Immunohistochemistry of formalin-fixed, paraffin-embedded tissue after heat-induced antigen retrieval.

## Specification

<b>Product Description</b>	Rabbit polyclonal antibody raised against synthetic peptide of WNT10B.
<b>Immunogen</b>	A synthetic peptide corresponding to 16 amino acids at internal region of human WNT10B.
<b>Host</b>	Rabbit
<b>Reactivity</b>	Dog, Horse, Human, Monkey, Mouse, Pig, Rabbit, Rat, Bats
<b>Specificity</b>	BLAST analysis of the peptide immunogen showed no homology with other human proteins.
<b>Form</b>	Liquid
<b>Purification</b>	Immunoaffinity chromatography
<b>Recommend Usage</b>	Immunohistochemistry (Formalin/PFA-fixed paraffin-embedded sections) (10-15 ug/ml) The optimal working dilution should be determined by the end user.
<b>Storage Buffer</b>	In PBS (0.09% sodium azide)
<b>Storage Instruction</b>	Store at 4°C. For long term storage store at -80°C. Aliquot to avoid repeated freezing and thawing.

## Note

This product contains sodium azide: a POISONOUS AND HAZARDOUS SUBSTANCE which should be handled by trained staff only.

## Applications

- Immunohistochemistry (Formalin/PFA-fixed paraffin-embedded sections)

Immunohistochemistry (Formalin/PFA-fixed paraffin-embedded sections) of human skin with WNT10B polyclonal antibody (Cat # PAB28376). Immunohistochemistry of formalin-fixed, paraffin-embedded tissue after heat-induced antigen retrieval.

## Gene Info — WNT10B

Entrez GeneID [7480](#)

Protein Accession# [O00744](#)

Gene Name WNT10B

Gene Alias SHFM6, WNT-12

Gene Description wingless-type MMTV integration site family, member 10B

Omim ID [601906](#)

Gene Ontology [Hyperlink](#)

**Gene Summary** The WNT gene family consists of structurally related genes which encode secreted signaling proteins. These proteins have been implicated in oncogenesis and in several developmental processes, including regulation of cell fate and patterning during embryogenesis. This gene is a member of the WNT gene family. It may be involved in breast cancer, and its protein signaling is likely a molecular switch that governs adipogenesis. This protein is 96% identical to the mouse Wnt10b protein at the amino acid level. This gene is clustered with another family member, WNT1, in the chromosome 12q13 region. [provided by RefSeq]

**Other Designations** WNT-10B protein

## Pathway

- [Basal cell carcinoma](#)
- [Hedgehog signaling pathway](#)
- [Melanogenesis](#)
- [Pathways in cancer](#)

- [Wnt signaling pathway](#)

## Disease

- [Amyotrophic lateral sclerosis](#)
- [Anoxia](#)
- [Cardiovascular Diseases](#)
- [Diabetes Mellitus](#)
- [Edema](#)
- [Fractures](#)
- [Genetic Predisposition to Disease](#)
- [Hip Fractures](#)
- [Osteoporosis](#)
- [Ovarian Neoplasms](#)
- [Spinal Fractures](#)