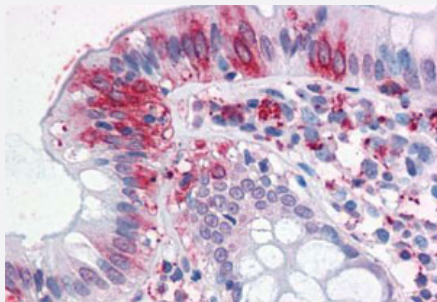


# NPTN polyclonal antibody

Catalog # PAB28168

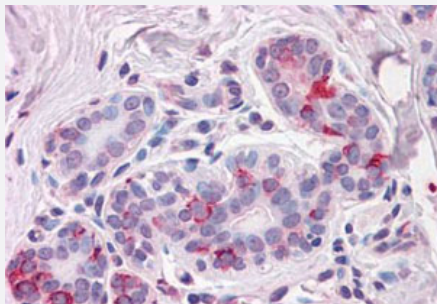
Size 50 ug

## Applications



### Immunohistochemistry (Formalin/PFA-fixed paraffin-embedded sections)

Immunohistochemistry (Formalin/PFA-fixed paraffin-embedded sections) of human colon with NPTN polyclonal antibody (Cat # PAB28168).  
Immunohistochemistry of formalin-fixed, paraffin-embedded tissue after heat-induced antigen retrieval.



### Immunohistochemistry (Formalin/PFA-fixed paraffin-embedded sections)

Immunohistochemistry (Formalin/PFA-fixed paraffin-embedded sections) of human breast with NPTN polyclonal antibody (Cat # PAB28168).  
Immunohistochemistry of formalin-fixed, paraffin-embedded tissue after heat-induced antigen retrieval.

## Specification

<b>Product Description</b>	Rabbit polyclonal antibody raised against synthetic peptide of NPTN.
<b>Immunogen</b>	A synthetic peptide corresponding to 19 amino acids at internal region of human NPTN.
<b>Host</b>	Rabbit
<b>Reactivity</b>	Bovine, Dog, Guinea pig, Hamster, Horse, Human, Monkey, Mouse, Pig, Rabbit, Rat
<b>Specificity</b>	BLAST analysis of the peptide immunogen showed no homology with other human proteins, except ARHGEF3 (60%).
<b>Form</b>	Liquid

Purification	Immunoaffinity chromatography
Recommend Usage	Immunohistochemistry (Formalin/PFA-fixed paraffin-embedded sections) (15-20 ug/ml)
Storage Buffer	In PBS (0.09% sodium azide)
Storage Instruction	Store at 4°C. For long term storage store at -80°C. Aliquot to avoid repeated freezing and thawing.
Note	This product contains sodium azide: a POISONOUS AND HAZARDOUS SUBSTANCE which should be handled by trained staff only.

## Applications

- Immunohistochemistry (Formalin/PFA-fixed paraffin-embedded sections)

Immunohistochemistry (Formalin/PFA-fixed paraffin-embedded sections) of human colon with NPTN polyclonal antibody (Cat # PAB28168). Immunohistochemistry of formalin-fixed, paraffin-embedded tissue after heat-induced antigen retrieval.

- Immunohistochemistry (Formalin/PFA-fixed paraffin-embedded sections)

Immunohistochemistry (Formalin/PFA-fixed paraffin-embedded sections) of human breast with NPTN polyclonal antibody (Cat # PAB28168). Immunohistochemistry of formalin-fixed, paraffin-embedded tissue after heat-induced antigen retrieval.

## Gene Info — NPTN

Entrez GeneID	<a href="#">27020</a>
Protein Accession#	<a href="#">Q9Y639</a>
Gene Name	NPTN
Gene Alias	DKFZp686L2477, GP55, GP65, MGC102805, SDFR1, SDR1, np55, np65
Gene Description	neuroplastin
Gene Ontology	<a href="#">Hyperlink</a>
Gene Summary	This gene encodes a type I transmembrane protein belonging to the Ig superfamily. The protein is believed to be involved in cell-cell interactions or cell-substrate interactions. Alternative splicing results in multiple transcript variants. [provided by RefSeq]
Other Designations	stromal cell derived factor receptor 1

## Disease

- [Genetic Predisposition to Disease](#)
- [Schizophrenia](#)