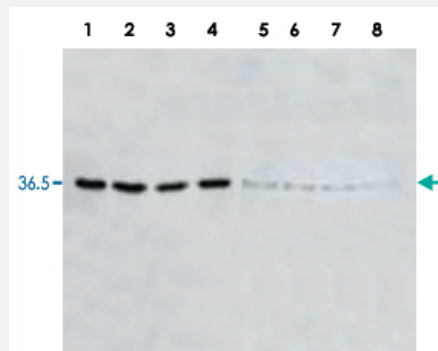


# LDHA polyclonal antibody

Catalog # PAB28057      Size 100 ug

## Applications



### Western Blot (Cell lysate)

Western Blot analysis of HeLa cell extracts by LDHA polyclonal antibody (Cat # PAB27911) with 30 ug of protein at 1:400. Lane 1-4: HeLa cell extracts cytoplasmic fraction (CF). Lane 5-8: HeLa cell extracts nuclear fraction (NF). Detected LDH at 36.6 kDa and 36 kDa .

## Specification

<b>Product Description</b>	Goat polyclonal antibody raised against native LDHA (Rabbit).
<b>Immunogen</b>	Native purified LDHA from rabbit muscle.
<b>Host</b>	Goat
<b>Reactivity</b>	Rabbit
<b>Form</b>	Lyophilized
<b>Isotype</b>	IgG
<b>Quality Control Testing</b>	Antibody Reactive Against Native Purified Protein.
<b>Recommend Usage</b>	ELISA (1:2000 - 1:10000) Immunoprecipitation (1:100) Western Blot (1:1000-1:5000) The optimal working dilution should be determined by the end user.
<b>Storage Buffer</b>	Lyophilized from 20 mM potassium phosphate buffer, 150 mM NaCl, pH 7.2 (0.01% sodium azide)

**Storage Instruction**

Store at 4°C on dry atmosphere.  
After reconstitution with 0.1 mL of deionized water, store at -20°C or lower.  
Aliquot to avoid repeated freezing and thawing.

**Note**

This product contains sodium azide: a POISONOUS AND HAZARDOUS SUBSTANCE which should be handled by trained staff only.

## Applications

- Western Blot (Cell lysate)

Western Blot analysis of HeLa cell extracts by LDHA polyclonal antibody (Cat # PAB27911) with 30 ug of protein at 1:400. Lane 1-4: HeLa cell extracts cytoplasmic fraction (CF). Lane 5-8: HeLa cell extracts nuclear fraction (NF). Detected LDH at 36.6 kDa and 36 kDa .

- Immunoprecipitation

- Enzyme-linked Immunoabsorbent Assay

## Gene Info — LDH-M

Entrez GeneID	<a href="#">100009107</a>
---------------	---------------------------

Gene Name	LDH-M
-----------	-------

Gene Alias	-
------------	---

Gene Description	lactate dehydrogenase-M
------------------	-------------------------

Gene Ontology	<a href="#">Hyperlink</a>
---------------	---------------------------

Other Designations	-
--------------------	---