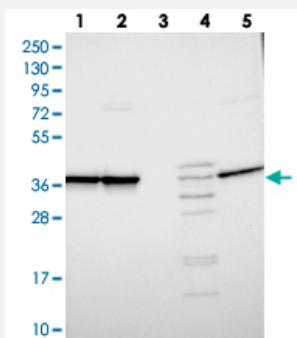


# GAPDH polyclonal antibody

Catalog # PAB27869

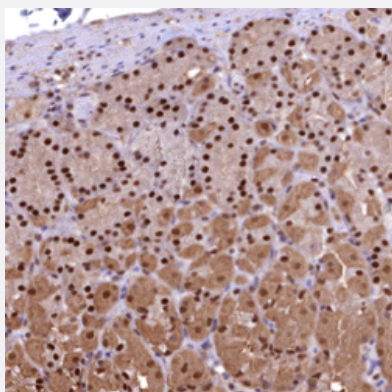
Size 100 uL

## Applications



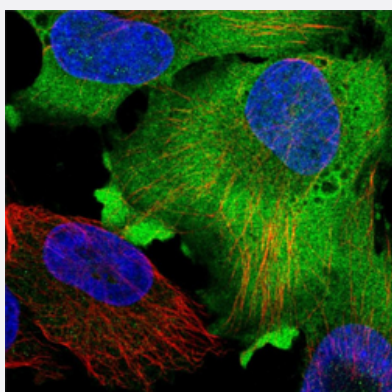
### Western Blot

Western blot analysis of Lane 1: RT-4, Lane 2: U-251 MG, Lane 3: Human Plasma, Lane 4: Liver, Lane 5: Tonsil with GAPDH polyclonal antibody (Cat # PAB27869) at 1:100-1:250 dilution.



### Immunohistochemistry (Formalin/PFA-fixed paraffin-embedded sections)

Immunohistochemical staining of human stomach, lower with GAPDH polyclonal antibody (Cat # PAB27869) shows strong nuclear and cytoplasmic positivity in glandular cells at 1:500-1:1000 dilution.



### Immunofluorescence

Immunofluorescent staining of human cell line U-251 MG with GAPDH polyclonal antibody (Cat # PAB27869) at 1-4 ug/mL dilution shows positivity in plasma membrane & cytoplasm.

## Specification

<b>Product Description</b>	Rabbit polyclonal antibody raised against recombinant GAPDH.
<b>Immunogen</b>	Recombinant protein corresponding to amino acids of human GAPDH.
<b>Sequence</b>	TVKAENGKLVINGNPITIFQERDPSKIKWGDAGAEYVVESTGVFTTMEKAGAHLQGGAKRVIIS
<b>Host</b>	Rabbit
<b>Reactivity</b>	Human
<b>Form</b>	Liquid
<b>Purification</b>	Antigen affinity purification
<b>Isotype</b>	IgG
<b>Recommend Usage</b>	Immunohistochemistry (1:500-1:1000) Western Blot (1:100-1:250) Immunofluorescence (1-4 ug/mL) The optimal working dilution should be determined by the end user.
<b>Storage Buffer</b>	In PBS, pH 7.2, (40% glycerol, 0.02% sodium azide)
<b>Storage Instruction</b>	Store at 4°C. For long term storage store at -20°C. Aliquot to avoid repeated freezing and thawing.
<b>Note</b>	This product contains sodium azide: a POISONOUS AND HAZARDOUS SUBSTANCE which should be handled by trained staff only.

## Applications

- Western Blot

Western blot analysis of Lane 1: RT-4, Lane 2: U-251 MG, Lane 3: Human Plasma, Lane 4: Liver, Lane 5: Tonsil with GAPDH polyclonal antibody (Cat # PAB27869) at 1:100-1:250 dilution.

- Immunohistochemistry (Formalin/PFA-fixed paraffin-embedded sections)

Immunohistochemical staining of human stomach, lower with GAPDH polyclonal antibody (Cat # PAB27869) shows strong nuclear and cytoplasmic positivity in glandular cells at 1:500-1:1000 dilution.

- Immunofluorescence

Immunofluorescent staining of human cell line U-251 MG with GAPDH polyclonal antibody (Cat # PAB27869) at 1-4 ug/mL dilution shows positivity in plasma membrane & cytoplasm.

## Gene Info — GAPDH

Entrez GeneID	<a href="#">2597</a>
Gene Name	GAPDH
Gene Alias	G3PD, GAPD, MGC88685
Gene Description	glyceraldehyde-3-phosphate dehydrogenase
Omim ID	<a href="#">138400</a>
Gene Ontology	<a href="#">Hyperlink</a>
Gene Summary	The product of this gene catalyzes an important energy-yielding step in carbohydrate metabolism, the reversible oxidative phosphorylation of glyceraldehyde-3-phosphate in the presence of inorganic phosphate and nicotinamide adenine dinucleotide (NAD). The enzyme exists as a tetramer of identical chains. Many pseudogenes similar to this locus are present in the human genome. [provided by RefSeq]
Other Designations	OTTHUMP00000174431 OTTHUMP00000174432 aging-associated gene 9 protein glyceraldehyde 3-phosphate dehydrogenase

## Pathway

- [Biosynthesis of alkaloids derived from histidine and purine](#)
- [Biosynthesis of alkaloids derived from ornithine](#)
- [Biosynthesis of alkaloids derived from shikimate pathway](#)
- [Biosynthesis of alkaloids derived from terpenoid and polyketide](#)
- [Biosynthesis of phenylpropanoids](#)
- [Biosynthesis of plant hormones](#)
- [Biosynthesis of terpenoids and steroids](#)
- [Glycolysis / Gluconeogenesis](#)
- [Metabolic pathways](#)

## Disease

- [Alzheimer disease](#)

- [Cardiovascular Diseases](#)
- [Diabetes Complications](#)
- [Metabolic Syndrome X](#)
- [Neoplasms](#)
- [Nerve Degeneration](#)
- [Osteoporosis](#)