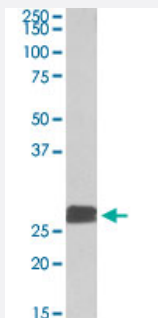


DUSP6 polyclonal antibody

Catalog # PAB27634 Size 100 ug

Applications



Western Blot (Tissue lysate)

DUSP6 polyclonal antibody (Cat # PAB27634) (0.3ug/ml) staining of human heart lysate (35ug protein in RIPA buffer). Primary incubation was 1 hour. Detected by chemiluminescence.

Specification

Product Description Goat polyclonal antibody raised against synthetic peptide of DUSP6.

Immunogen A synthetic peptide corresponding to C-terminus of human DUSP6.

Sequence PSNQNVYQVDSLQST

Host Goat

Theoretical MW (kDa) 26

Reactivity Chicken, Dog, Human, Mouse, Pig, Rat

Purification Antigen affinity purification

Concentration 0.5 mg/mL

Recommend Usage
ELISA (1:128000)
Western Blot (0.3-1 ug/ml)
The optimal working dilution should be determined by the end user.

Storage Buffer In Tris saline, pH 7.3 (0.02% sodium azide, 0.5% BSA)

Storage Instruction

Store at -20°C.
Aliquot to avoid repeated freezing and thawing.

Note

This product contains sodium azide: a POISONOUS AND HAZARDOUS SUBSTANCE which should be handled by trained staff only.

Applications

- Western Blot (Tissue lysate)

DUSP6 polyclonal antibody (Cat # PAB27634) (0.3ug/ml) staining of human heart lysate (35ug protein in RIPA buffer). Primary incubation was 1 hour. Detected by chemiluminescence.

Gene Info — DUSP6

Entrez GeneID[1848](#)**Protein Accession#**[NP_001937.2;NP_073143.2](#)**Gene Name**

DUSP6

Gene Alias

MKP3, PYST1

Gene Description

dual specificity phosphatase 6

Omim ID[602748](#)**Gene Ontology**[Hyperlink](#)**Gene Summary**

The protein encoded by this gene is a member of the dual specificity protein phosphatase subfamily. These phosphatases inactivate their target kinases by dephosphorylating both the phosphoserine/threonine and phosphotyrosine residues. They negatively regulate members of the mitogen-activated protein (MAP) kinase superfamily (MAPK/ERK, SAPK/JNK, p38), which are associated with cellular proliferation and differentiation. Different members of the family of dual specificity phosphatases show distinct substrate specificities for various MAP kinases, different tissue distribution and subcellular localization, and different modes of inducibility of their expression by extracellular stimuli. This gene product inactivates ERK2, is expressed in a variety of tissues with the highest levels in heart and pancreas, and unlike most other members of this family, is localized in the cytoplasm. Two transcript variants encoding different isoforms have been found for this gene. [provided by RefSeq]

Other Designations

MAP kinase phosphatase 3|serine/threonine specific protein phosphatase

Pathway

- [MAPK signaling pathway](#)

Disease

- [Bipolar Disorder](#)
- [Cardiovascular Diseases](#)
- [Diabetes Mellitus](#)
- [Edema](#)
- [Genetic Predisposition to Disease](#)
- [Kidney Failure](#)