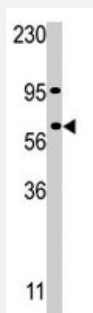


# RIOK1 polyclonal antibody

Catalog # PAB2763

Size 400 uL

## Applications



### Western Blot (Cell lysate)

Western blot analysis of RIOK1 in A-375 cell lysate. RIOK1 (arrow) was detected using the RIOK1 polyclonal antibody (Cat # PAB2763).

## Specification

<b>Product Description</b>	Rabbit polyclonal antibody raised against synthetic peptide of RIOK1.
<b>Immunogen</b>	A synthetic peptide (conjugated with KLH) corresponding to C-terminus of human RIOK1.
<b>Host</b>	Rabbit
<b>Reactivity</b>	Human
<b>Form</b>	Liquid
<b>Purification</b>	Protein G purification
<b>Recommend Usage</b>	Western Blot (1:1000) The optimal working dilution should be determined by the end user.
<b>Storage Buffer</b>	In PBS (0.09% sodium azide)
<b>Storage Instruction</b>	Store at 4°C. For long term storage store at -20°C. Aliquot to avoid repeated freezing and thawing.
<b>Note</b>	This product contains sodium azide: a POISONOUS AND HAZARDOUS SUBSTANCE which should be handled by trained staff only.

## Applications

- Western Blot (Cell lysate)

Western blot analysis of RIOK1 in A-375 cell lysate. RIOK1 (arrow) was detected using the RIOK1 polyclonal antibody (Cat # PAB2763).

## Gene Info — RIOK1

Entrez GeneID	<a href="#">83732</a>
Protein Accession#	<a href="#">NP_113668;Q9BRS2</a>
Gene Name	RIOK1
Gene Alias	AD034, FLJ30006, MGC12903, bA288G3.1
Gene Description	RIO kinase 1 (yeast)
Gene Ontology	<a href="#">Hyperlink</a>
Gene Summary	This gene includes two alternatively spliced transcript variants, which encode different isoforms. The function of this gene has not been determined. [provided by RefSeq]
Other Designations	OTTHUMP00000015999 RIO kinase 1 prematurely truncated due to insertion of intronic sequence

## Publication Reference

- [Characterisation of tumour-associated antigens in colon cancer.](#)

Line A, Slucka Z, Stengrevics A, Silina K, Li G, Rees RC.

Cancer Immunology, Immunotherapy : CII 2002 Sep; 51(10):574.