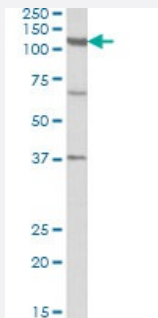


# CP110 polyclonal antibody

Catalog # PAB27617      Size 100 ug

## Applications



### Western Blot (Tissue lysate)

CP110 polyclonal antibody (Cat # PAB27617) (1ug/ml) staining of human testis lysate (35ug protein in RIPA buffer). Primary incubation was 1 hour.

## Specification

**Product Description** Goat polyclonal antibody raised against synthetic peptide of CP110.

**Immunogen** A synthetic peptide corresponding to human CP110.

**Sequence** CEKSLARIQEAS

**Host** Goat

**Theoretical MW (kDa)** 110

**Reactivity** Human

**Purification** Antigen affinity purification

**Concentration** 0.5 mg/mL

**Recommend Usage**  
ELISA (1:32000)  
Western Blot (0.3-1 ug/ml)  
The optimal working dilution should be determined by the end user.

**Storage Buffer** In Tris saline, pH 7.3 (0.02% sodium azide, 0.5% BSA)

**Storage Instruction**

Store at -20°C.  
Aliquot to avoid repeated freezing and thawing.

**Note**

This product contains sodium azide: a POISONOUS AND HAZARDOUS SUBSTANCE which should be handled by trained staff only.

## Applications

- Western Blot (Tissue lysate)

CP110 polyclonal antibody (Cat # PAB27617) (1ug/ml) staining of human testis lysate (35ug protein in RIPA buffer). Primary incubation was 1 hour.

## Gene Info — CP110

**Entrez GeneID**[9738](#)**Protein Accession#**[NP\\_001185951.1;NP\\_055526.3](#)**Gene Name**

CP110

**Gene Alias**

DKFZp781G1416, KIAA0419

**Gene Description**

CP110 protein

**Omim ID**[609544](#)**Gene Ontology**[Hyperlink](#)**Other Designations**

OTTHUMP00000162162